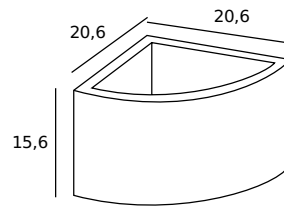


atelier sedap / LIGHTING

3032 / LIA Design Atelier Sedap

High strength plaster corner wall lamp



Weight

2.3 Kg

Orientation



FINISHES

Natural plaster finish Acrylic paint finish Mat polyurethane laccé (PU)

AA **BB** **CA** **CB** **CF** **CC** **CD** **CE**

Metal paint

MA **MB**

LIGHT SOURCES

REFERENCE	SOURCES	FEATURES
3032_01	Incandescent, double envelope halogen P. maxi : 100 W / E27 Glass diffuser at the bottom	IP 20

ATTENTION: POUR TOUTE INTERVENTION SUR L'APPLIQUE, COUPER L'ALIMENTATION.

CAREFUL: FOR THIS OPERATION YOU HAVE TO CUT OFF THE POWER.

ACHTUNG: FÜR DIESE HAND HABUNG MÜSSEN DER STROM UNTERBROCHEN.

CUIDADO: PARA CUALQUIER INTERVENCION EN EL APPLIQUE, CORTAR LA ALIMENTACION ELECTRICA.

ATTENZIONE: PER QUELUNQUE INTERVENTO SULL'APPLIQUE INTERROMPERE L'ALIMENTAZIONE ELETTRICA.

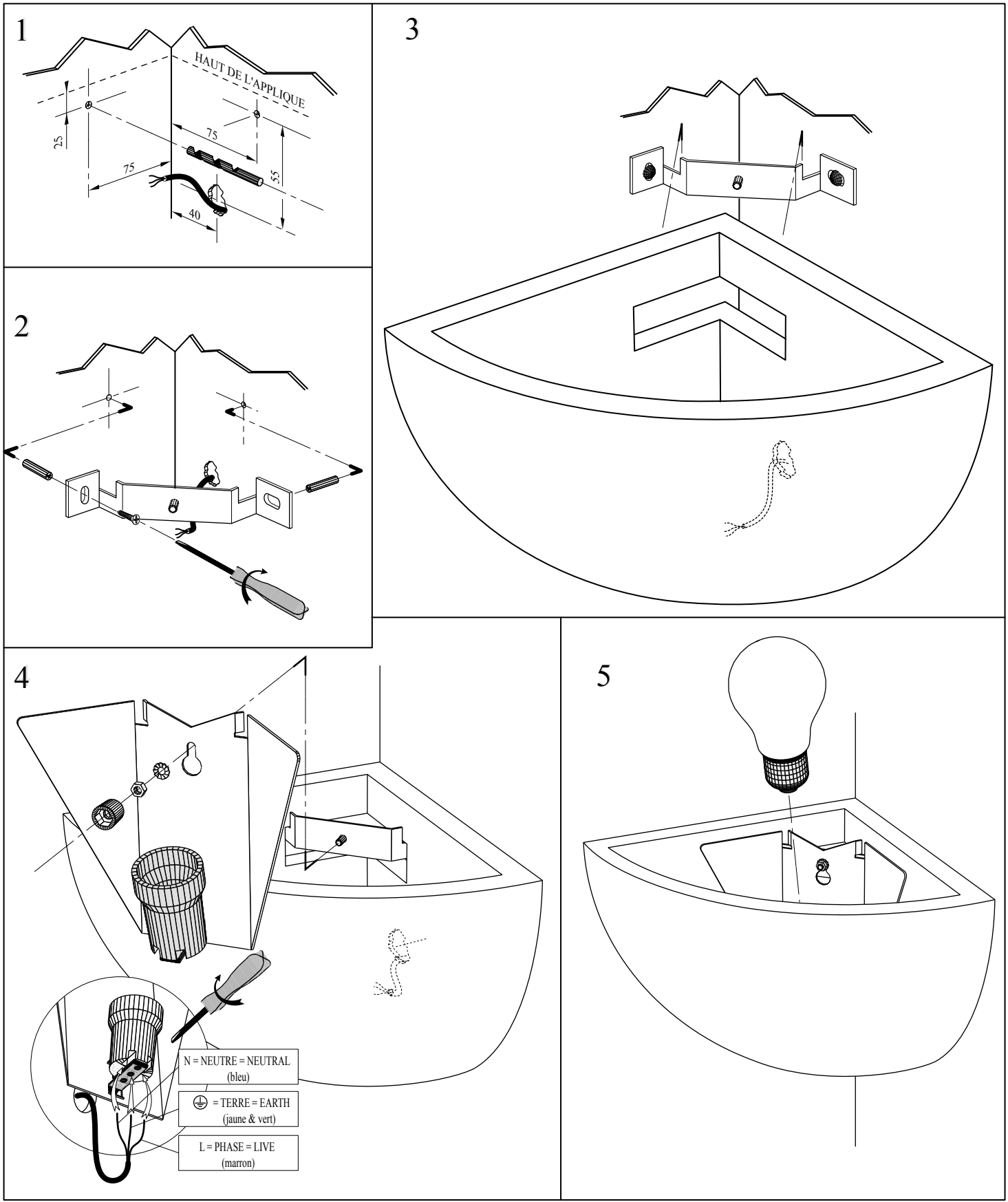
MAXIMUM: 100 W / E27

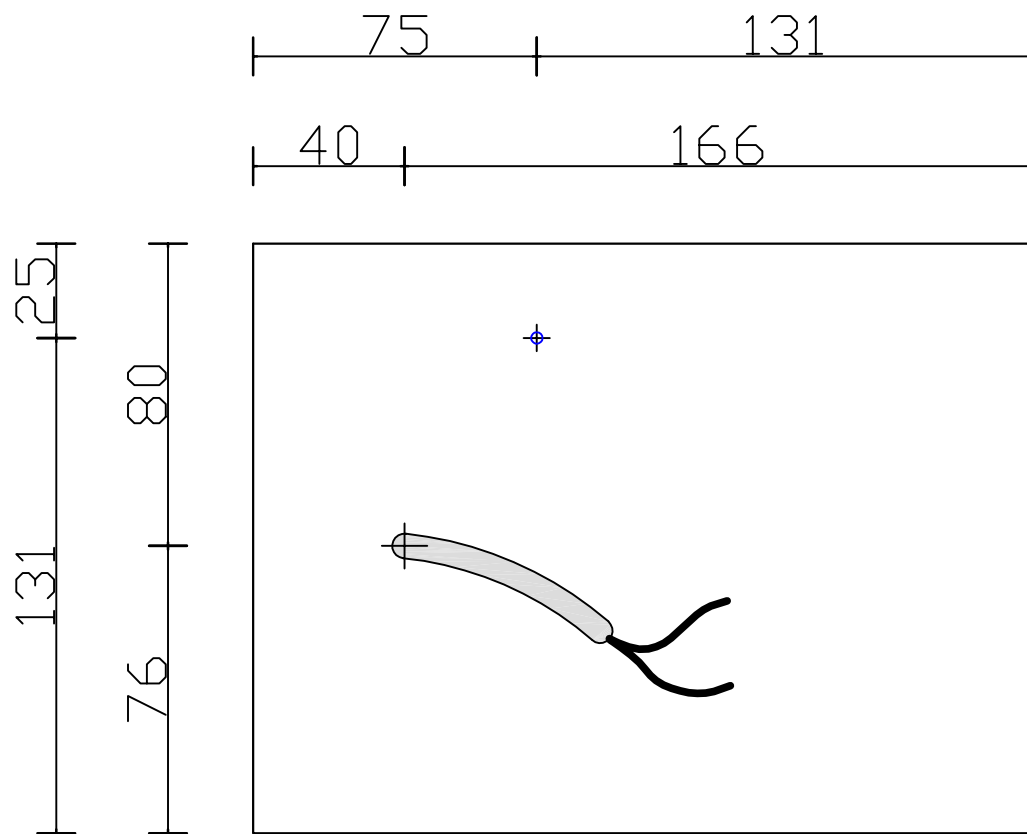
Luminaire Classe 1	Classe 1 lamp	Leuchten Klasse 1	Luminario de clase 1	Lume Classe 1
Type de lampe: Incandescente 100W / E27	Bulb type: Incandescant 100W / E27	Glasbime typ: Weißglühende 100W / E27	Lipo de bombilla: Incandescente 100W / E27	Typo di ampola: A incandescenza 100W / E27

ATELIER SEDAP
LES BEAUX ARTS DU PLÂTRE

018020070-1

Tension: 230 / 240 Volts. Fréquence: 50 Hertz.





⊕ Point de Fixation de l'Équipement

⤵ Passage du Cable

Plan de Perçage 3032

9 décembre 2008

Ech:1/4

C.BATARD