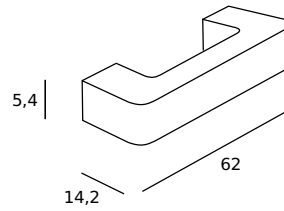


atelier sedap / LIGHTING

3078 / AGRAFFE Design Atelier Sedap

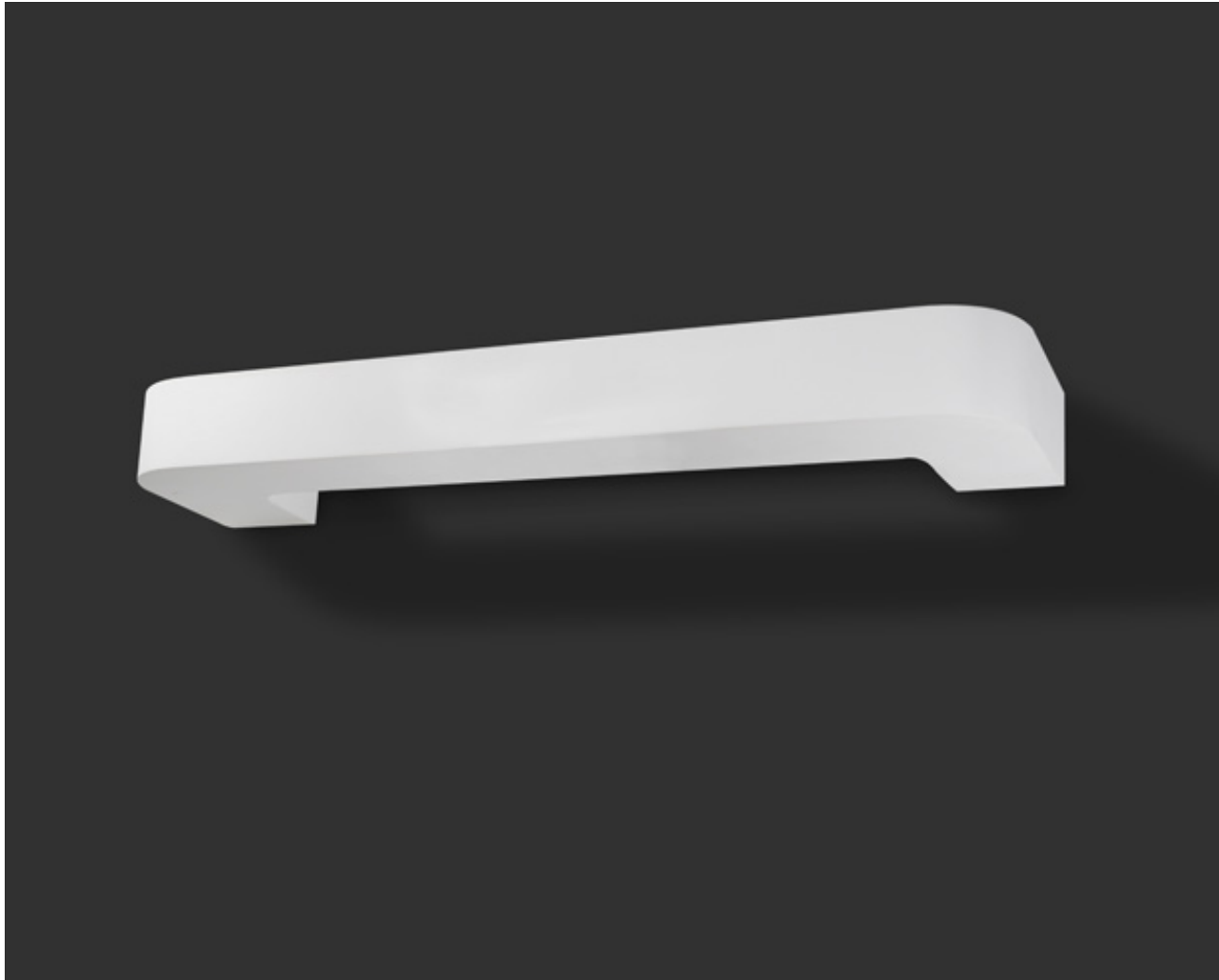
High strength plaster wall lamp, direct and indirect lighting



Weight

2.4 Kg

Orientation



FINISHES

Natural plaster finish Acrylic paint finish Mat polyurethane lateur (PU)



Metal paint



LIGHT SOURCES

REFERENCE

SOURCES

3078_03

Fluocompact - Electronic ballast
2 x 26 W / G24q3

FEATURES

