

Reading luminaires



Page 305



Page 304

Recessed luminaires decorative



Page 355



Page 355



Page 355



Page 356



Page 356



Page 356



Page 356



Page 374



Page 354



Page 352



Page 353



Page 353



Page 332



Page 353



Page 353



Page 365



Page 365



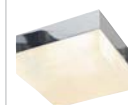
Page 332



Page 332



Page 354



Page 352



Page 352



Page 354



Page 354

LED- luminaires, compact



Page 332



Page 333



Page 332



Page 333



Page 334



Page 334



Page 334



Page 333



Page 333



Page 333



Page 335



Page 333



Page 336



Page 336



Page 337



Page 337



Page 333



Page 338



Page 340



Page 340



Page 317

New Tria, square

MR16
QRB111
GU10
ES111
GX10
G12



Page 349



Page 358



Page 361



Page 368



Page 385



Page 385

New Tria, round

MR16
QRB111
GU10
ES111
GX10
G12



Page 346



Page 357



Page 361



Page 366



Page 385



Page 385

Further recessed luminaires, rotatable



Page 344



Page 345



Page 346



Page 345



Page 346



Page 346



Page 347



Page 361



Page 361



Page 358



Page 366



Page 374



Page 385



Page 350



Page 350



Page 348



Page 357



Page 366



Page 386



Page 386



Page 347



Page 389



Page 389



Page 390



Page 390



Page 390



Page 357



Page 366



Page 319

Mounting ring,
rigid construction



Page 344



Page 344



Page 361



Page 347



Page 371



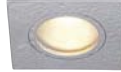
Page 371



Page 366



Page 374



Page 347



Page 349



Page 385



Page 371



Page 344



Page 371



Page 371



Page 345



Page 346



Page 345

Downlights



Page 337



Page 341



Page 338



Page 387



Page 387



Page 387



Page 387



Page 388



Page 388



Page 345



Page 357



Page 369



Page 369



Page 361



Page 385



Page 339



Page 392



Page 392



Page 372



Page 372



Page 372



Page 374



Page 376



Page 376-377



Page 378



Page 379



Page 379



Page 379



Page 380



Page 380



Page 393

Louvre luminaires



Page 382



Page 382

Aixlight®
MOD MR16
MOD QRB111
MOD GU10
MOD ES111



Page 351



Page 359



Page 362



Page 370

Aixlight® Flat
QRB
ES111



Page 320



Page 320

Aixlight® Pro
Frameless
Frame
Module



Page 323



Page 324



Page 326-329

Aixlight® Pro 50
Frame
Module



Page 330



Page 331

Frames



Page 342



Page 314



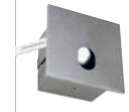
Page 343



Page 343



Page 312



Page 313



Page 313



Page 314



Page 343



Page 350



Page 350



Page 316



Page 381

Downunder



Page 307



Page 307



Page 310



Page 310



Page 310



Page 308



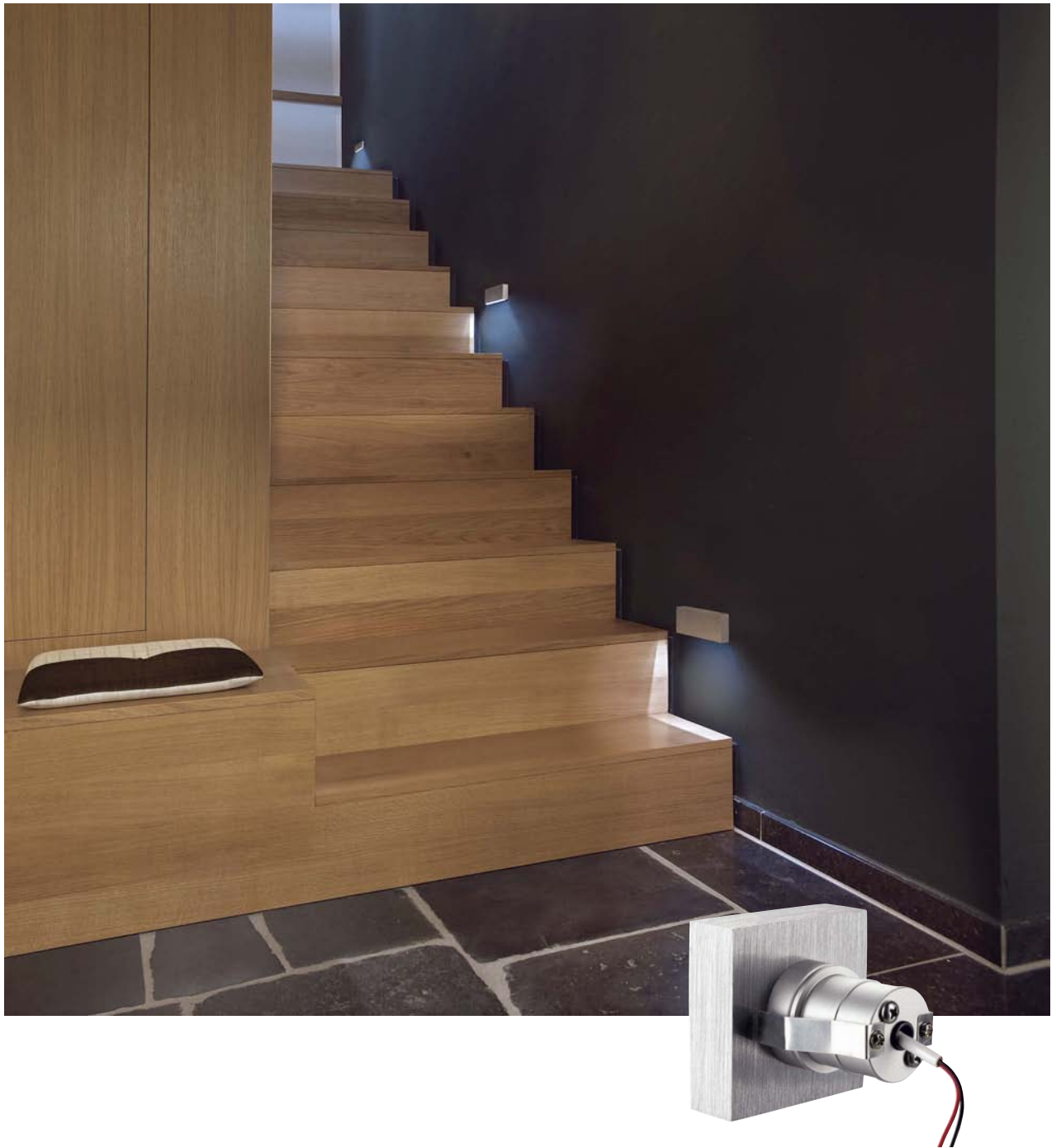
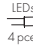





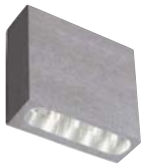

Page 307



Page 308



Page 308

**LED QUAD 1** Design by CDC24=  4 pce.   3,5  5  0,17  **Bulb:**
LED (incl.)
0,5W total**Material:**
Aluminium**Dimensions:**
W/H/D: 6/6/6,2 cm**Accessory/Included parts:**
Power unit (excl.)**Note:**
Suitable 24V= power units
see pages 582-583.**Versions:**
alu brushed
LED white**Art. No.:**
152001

£29.90

LED QUAD 2 Design by CDC24=  12 pce.   3,5  5  0,36  **Bulb:**
LED (incl.)
0,9W total**Material:**
Aluminium**Dimensions:**
W/H/D: 16,5/6/6,2 cm**Accessory/Included parts:**
Power unit (excl.)**Note:**
Suitable 24V= power units
see pages 582-583.**Versions:**
alu brushed
LED white**Art. No.:**
152011

£49.90



Integrated LED-light in closed position.

GILALED

700mA

LEDs
2 pce.



355°

190°

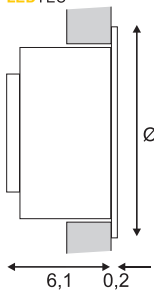
10,2

5,9

0,36



LED[®]
LEDTEC



Ø 11,2



Bulb:
PowerLED (incl.)
3W
and
LED (incl.)
0,06W
Closed current, 10mA

Material:
Aluminium

Dimensions:
Ø/H: 11,2/6,3 cm
Connection lead-L: 50 cm

Accessory/Included parts:
LED converter (excl.)

Note:
Flip function to change the LEDs.
Integrated LED-light in closed position.
Not suitable for series connection.
Can only be operated with 464200 driver.

Versions:
aluminium
LED white/blue 146381
LED warm white/blue 146382

£99.00





BEDSIDE left/right

700mA



2 pce.



350°



90°



17,5/72



8,5



110°



0,85



0,85



0,85



0,85



Bulb:
PowerLED (incl.)
3W
and
LED (incl.)
0,06W
Closed current, 10mA

Material:
Aluminium

Dimensions:
W/H/D: 18,5/8,2/5,3 cm

Accessory/Included parts:
Cavity wall fitting clamp (incl.)
LED converter (excl.)

Note:
Integrated blue LED-light in
closed position.
The main LED is switched on with
the push-lock-system.
Operate only with driver
(464200) see page 580.

Versions:
silver grey
LED white/blue
left
right

LED warm white/blue
left
right

Art. No.:

146244

146254

146242

146252

£179.00

ACCESSORY for Bedside



Fitting box
W/H/D: 17,3/13/8 cm

To fit the Bedside lamp in
masonry walls.

Art. No.:

146260

£24.90



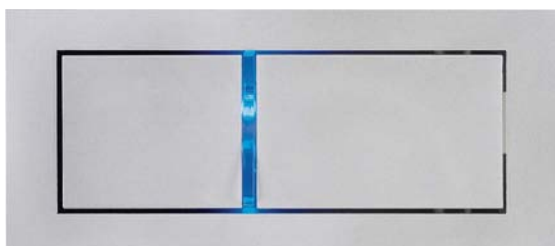
17,5/8



8



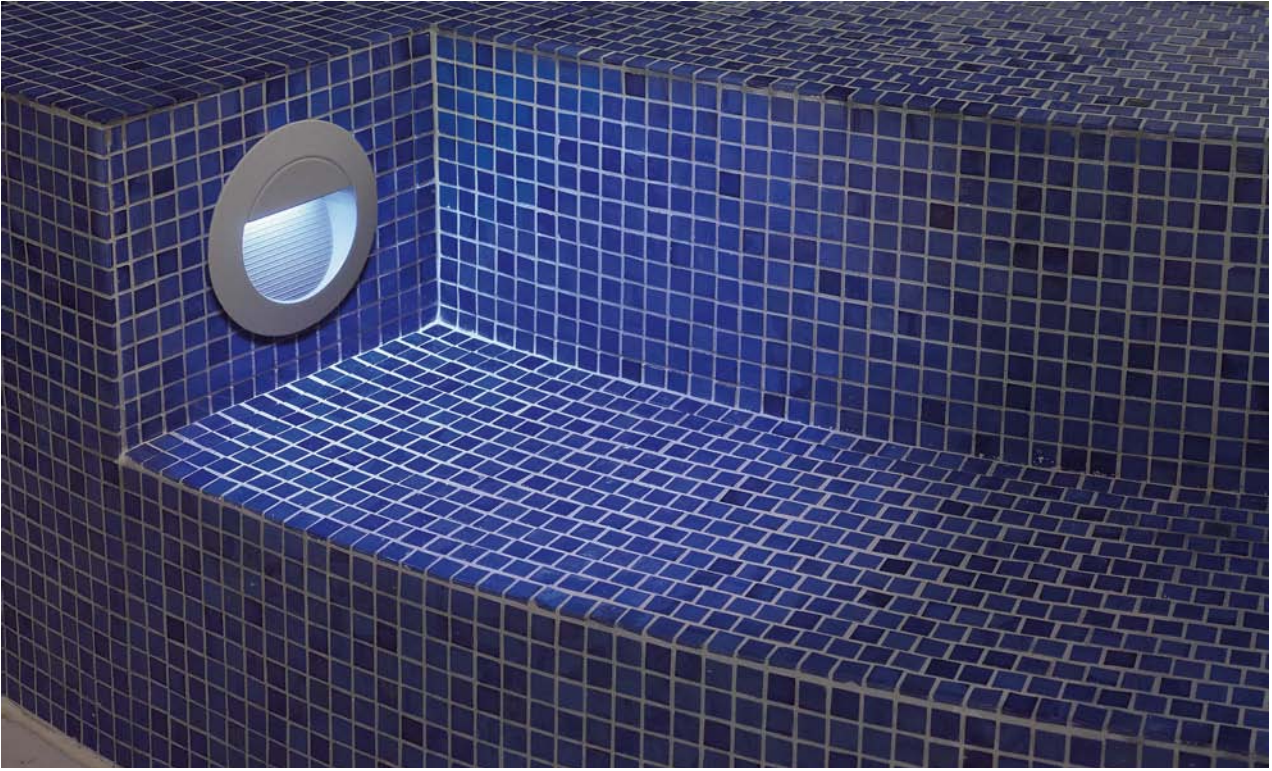
0,85

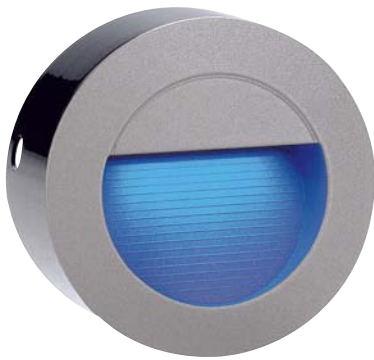


Bedside left



Bedside right





DOWNUNDER LED 14

230~      IP44 

LED
LEDTEC



Bulb:
LED (incl.)
0,8W total

Material:
Aluminium

Dimensions:
Ø/D: 12,5/6 cm
Fitting box-Ø/D: 12/7,2 cm

Accessory/Included parts:
Fitting box (incl.)

Note:
When applied in moist rooms
and outdoor applications the
fixture must be fitted with the
window facing downwards!
Fitting box for the application in
masonry walls.

Versions:
stone grey
LED white
LED warm white
LED blue

Art. No.:

230201

230202

230207

£39.90

alu brushed
LED white

230301

£39.90

DOWNUNDER LED 15

230~      IP44 

LED
LEDTEC



Bulb:
LED (incl.)
0,9W total

Material:
Aluminium

Dimensions:
W/H/D: 9/23/7,5 cm
Fitting box-W/H/D:
9,5/23,5/9 cm

Accessory/Included parts:
Fitting box (incl.)

Note:
When applied in moist rooms
and outdoor applications the
fixture must be fitted with the
window facing downwards!
Fitting box for the application in
masonry walls.

Versions:
stone grey
LED white
LED blue

Art. No.:

230211

230217

alu brushed
LED white

230311

£39.90

DOWNUNDER LED 27

230~      IP44 

LED
LEDTEC



Bulb:
LED (incl.)
1,8W total

Material:
Aluminium

Dimensions:
W/H/D: 18/23/7,5 cm
Fitting box-W/H/D:
18,5/23,5/9 cm

Accessory/Included parts:
Fitting box (incl.)

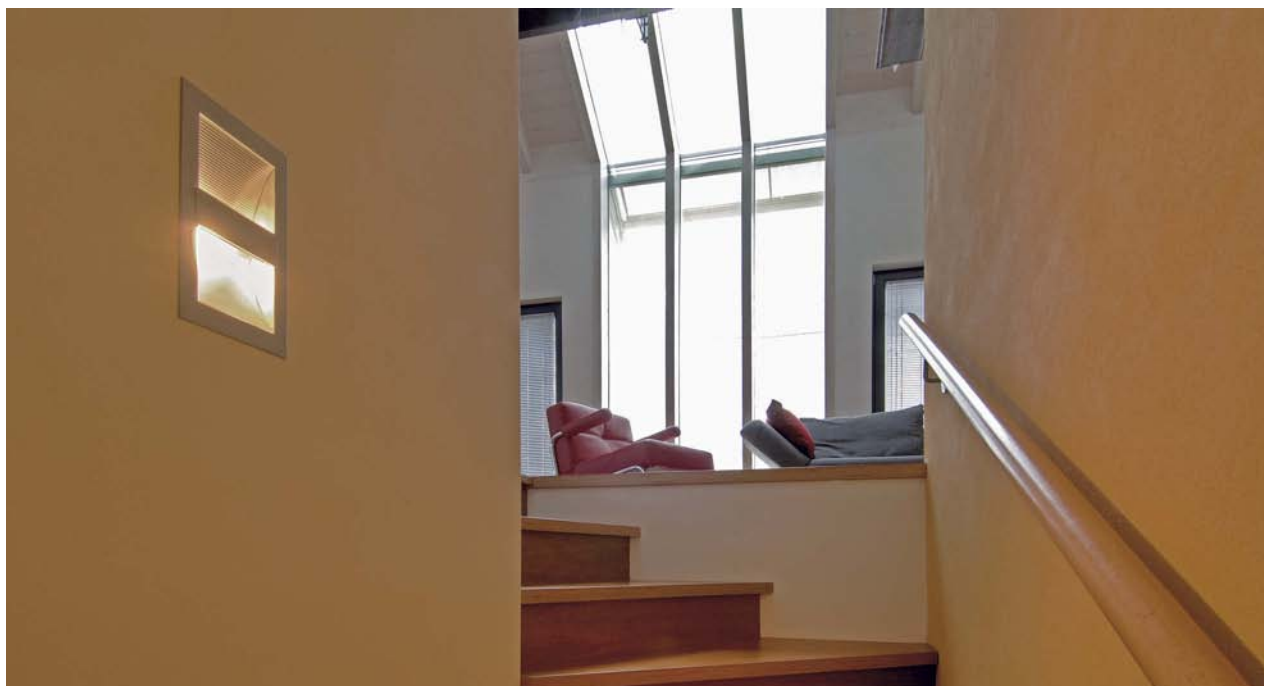
Note:
When applied in moist rooms
and outdoor applications the
fixture must be fitted with the
window facing downwards!
Fitting box for the application in
masonry walls.

Versions:
stone grey
LED white

Art. No.:

230221

£59.50



DOWUNDER MID



Socket/Bulb:
R7s/R7s, 78 mm (excl.)
60W max.

Material:
Aluminium

Dimensions:
W/H/D: 25/13,5/9,5 cm

Note:
Suitable for cavity walls and ceilings with a thickness of max. 12 mm.

Versions:
silver grey

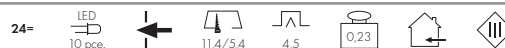
Art. No.:
151974

£49.90

Recommended bulb:
60W
519206
£2.98



DOWUNDER RCL 101



Bulb:
LED SMD (incl.)
2W total

Material:
Aluminium/stainless steel 304

Dimensions:
W/H/D: 12,5/6,5/4,7 cm

Accessory/Included parts:
Power unit (excl.)

Note:
Suitable for cavity walls with a thickness of max. 15 mm.

Versions:
Stainless steel brushed
LED white
LED warm white

Art. No.:

152061

152062

£99.00

LED DOWUNDER MINI



Bulb:
PowerLED (incl.)
1W

Material:
Aluminium

Dimensions:
W/H/D: 6/14/4,8 cm

Accessory/Included parts:
LED Converter (excl.)

Note:
When connecting several lamps, please use a series connection!

Versions:
silver grey
LED white
LED warm white

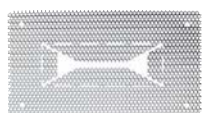
Art. No.:

152071

152072

£59.50

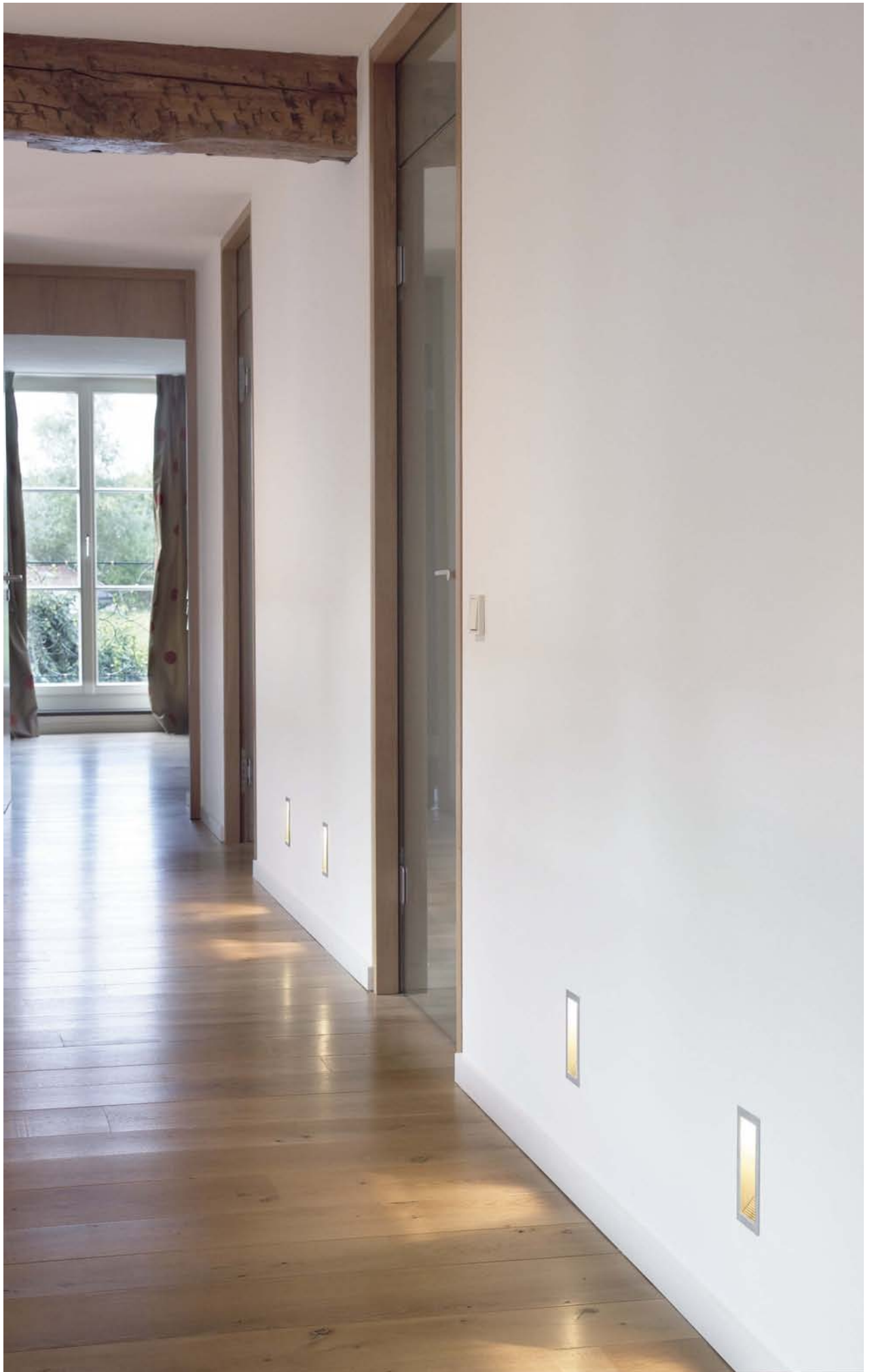
ACCESSORY for LED Downunder Mini



Frame
Steel galvanized
W/L: 12/20 cm

Art. No.:
152079

£9.90





DOWNUNDER 05

12~



21/14



9



0,39



Socket/Bulb:
GY6,35/2pin base (excl.)
50W max.

Material:
Aluminium

Dimensions:
Outer-W/H: 8/15,5 cm
Rear housing-W/H/D:
19,5/7/7 cm

Accessory/Included parts:
Transformer (excl.)

Versions:
alu natural

Art. No.:
151973

£39.90

Flush mount frame
for Downunder 05

925195

£9.90

Recommended bulb:
50W
512250
£0.90



DOWNUNDER I

12~



11,5/14



9



0,55



Socket/Bulb:
GY6,35/2pin base (excl.)
50W max.

Material:
Aluminium

Dimensions:
Outer-W/H: 12/15,5 cm
Rear housing-W/H/D:
10,5/19,3/7,2 cm

Accessory/Included parts:
Transformer (excl.)

Versions:
alu natural

Art. No.:
151970

£49.90

Flush mount frame
for Downunder I

925200

£9.90

Recommended bulb:
50W
512250
£0.90



DOWNUNDER II

230~

VG
EEI=B2

21/28,5



9



2,0



Socket/Bulb:
G24d-1/
TC-D EnergySaver 2-pin (excl.)
13W

Material:
Aluminium

Dimensions:
Outer-W/H: 22,1/30,5 cm
Rear housing-W/H/D:
20/38,5/9 cm

Accessory/Included parts:
Ballast (incl.)

Versions:
alu natural

Art. No.:
151971

£79.90

Flush mount frame
for Downunder II

925250

£19.90

Recommended bulb:
13W
508213 (warm white)
508313 (white)
£6.90



DOWNUNDER III

230~



21/28



9



1,5



Socket/Bulb:
R7s/R7s, 118 mm (excl.)
100W max.

Material:
Aluminium

Dimensions:
Outer-W/H: 22,1/30,5 cm
Rear housing-W/H/D:
20/36/9 cm

Versions:
alu natural

Art. No.:
151972

£99.00

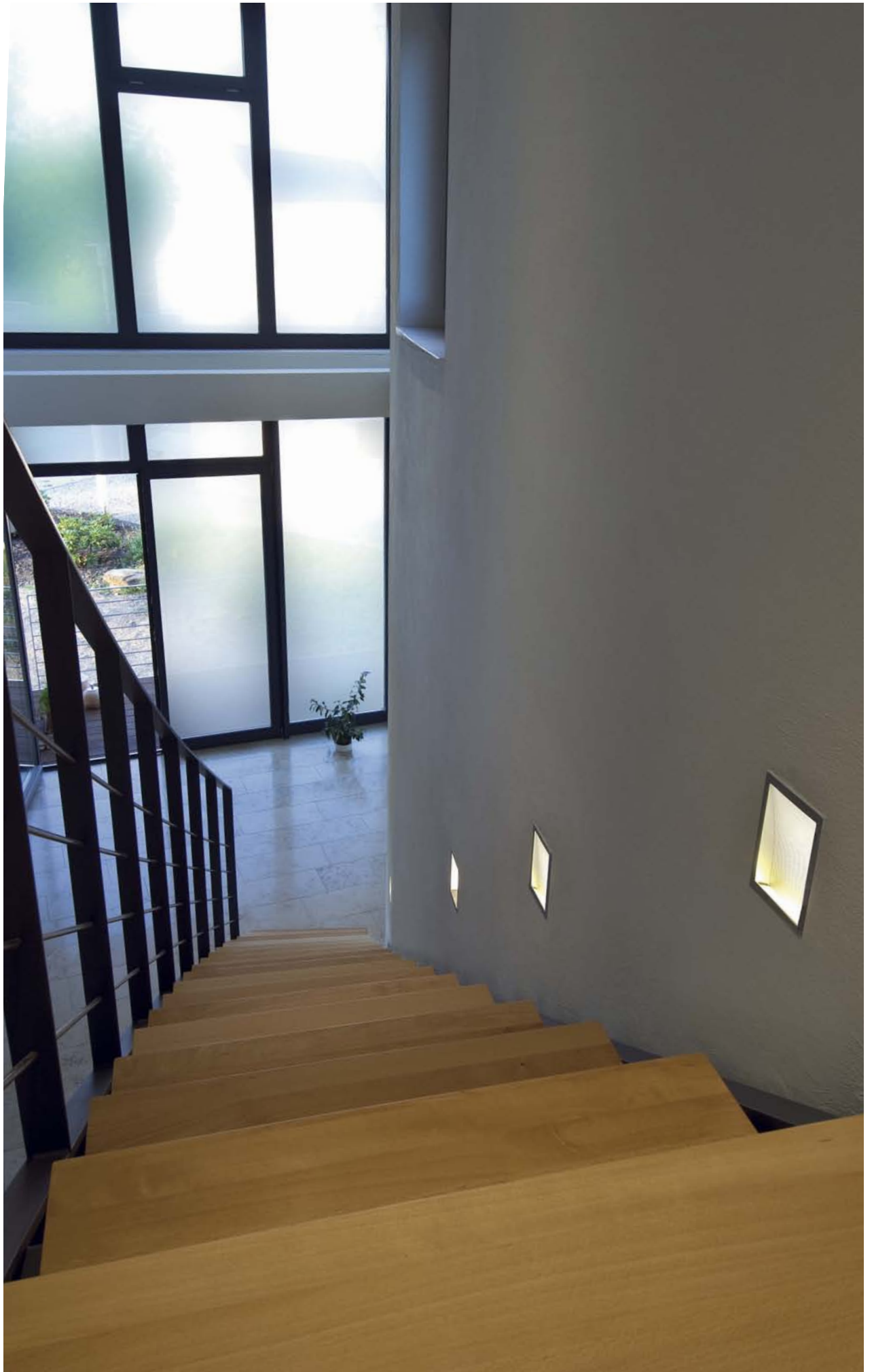
Flush mount frame
for Downunder III

925250

£19.90

Recommended bulb:
100W EnergySaver
519221
£2.98







MINI FRAME LED Design by CDC

12~



4 pce.



3,5



6,5



0,02



Bulb:
LED (incl.)
0,3W total

Material:
Plastic/glass

Dimensions:
W/H/D: 4/4/5 cm

Accessory/Included parts:
Toroidal transformer (excl.)

Note:
Operate only with toroidal
transformer see page 586-587.

Versions:
silver grey
LED white
LED warm white
LED blue

Art. No.:

112711

112712

112717

£19.90



When connecting several of the Fok LED please use a series connection!

FOK LED Design by CDC

350mA



Bulb:
PowerLED (incl.)
1W

Material:
Aluminium

Dimensions:
W/H/D: 9/9/6 cm
Connection lead-L: 44,5 cm

Accessory/Included parts:
Mini-plug (incl.)
LED driver (excl.)

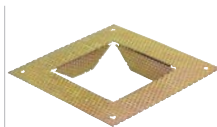
Note:
The light beam is focusable by removing the front cover!
FOK LED can only be operated with suitable 350mA driver (e.g. 464111) see page 580.
Suitable connector strip (111850) see page 581.

Versions:
alu brushed
LED white
LED warm white

Art. No.:
112801
112802

£39.90

ACCESSORY for Fok LED



Flush mount frame
Steel bronzed
W/H: 13,5/13,5 cm

Art. No.:
112780
£4.40



Fitting box
Plastic
W/H/D: 8,4/12,3/6,7 cm

Art. No.:
112781
£6.90

SLOT LED

230~



IP44



Bulb:
230V, PowerLED (incl.)
4W

Material:
Aluminium

Dimensions:
L/W: 10/10 cm

Accessory/Included parts:
Fitting box (incl.)

Note:
IP44 is only achieved with light emitting downwards.

Versions:
silver grey
LED white
LED warm white

Art. No.:
231001
231002

£79.90



Frame Basic LED

The minor heat development allows the insertion of negatives or individually made foils.



FRAME CURVE LED Design by CDC

350mA 1 pce.



Bulb:
PowerLED (incl.)
1W

Material:
Aluminium

Dimensions:
W/H/D: 9/9/3,8 cm
Connection lead-L: 30 cm

Accessory/Included parts:
Mini-plug (incl.)
LED driver (excl.)

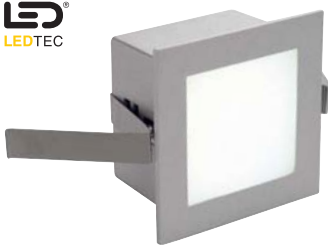
Note:
Operate only with suitable LED-driver/electronic ballast 350mA see page 580.
Suitable connector strip (111850) see page 581.

Versions:
silver grey
LED white
LED warm white
LED blue

Art. No.:
111291
111292
111297
£29.90

FRAME BASIC LED Design by CDC

350mA 1 pce.



Bulb:
PowerLED (incl.)
1W

Material:
Aluminium/glass

Dimensions:
W/H/D: 9/9/5,5 cm
Connection lead-L: 45 cm

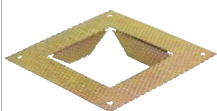
Accessory/Included parts:
Mini-plug (incl.)
LED Driver (excl.)
Foils (excl.)

Note:
Operate only with suitable LED-driver/electronic ballast 350mA see Page 580.
Suitable connector strip (111850) see page 581.

Versions:
silver grey
LED white
LED warm white
LED blue

Art. No.:
111261
111262
111267
£34.90

ACCESSORY for Frame Basic LED and Frame Curve LED



Flush mount frame
Steel bronzed
W/H: 13,5/13,5 cm

Art. No.:
112780
£4.40



Fitting box
Plastic
W/H/D: 8,4/12,3/6,7 cm

Art. No.:
112781
£6.90




GLENOS LED Design by CDC

24V 24 pce. 32,5/4,5 6,5 0,6


Bulb:
LED (incl.)
3W total

Material:
Aluminium/glass

Dimensions:
W/H/D: 33,4/6/6,3 cm
Flush mount frame:
W/H/D: 40/12,3/2,5 cm
Installation dimensions: 33/4,8 cm

Accessory/Included parts:
Diffuser (incl.)
Power unit (excl.)

Note:
For the connection to a 24V=
power unit see page 582-583.

Versions:
silver grey
LED white
LED warm white

Art. No.:
112811
112812

£49.90
Flush mount frame:
For the installation in masonry
for Glenos LED.
silver grey

112810
£9.90
GLENOS LED XL

24V 78 pce. 97,7/4,7 9,5 0,98


Bulb:
LED (incl.)
7,5W total

Material:
Aluminium/acrylic

Dimensions:
W/H/D: 99/5,8/5 cm

Accessory/Included parts:
Diffuser (incl.)
Power unit (excl.)

Note:
For the connection to a 24V=
Power unit see page 582-583.
Suitable for cavity walls and
ceilings with a material thickness
of 0,5-2 cm.

Versions:
silver grey
LED white
LED warm white

Art. No.:
112821
112822

£159.00



LED SLIM LIGHT recessed

12~



Bulb:
SMD LED (incl.)
0,5W total

Material:
Aluminium/artificial resin

Dimensions:
Cover-Ø/H: 5,5/1 cm
Connection lead-L: 2 m

Accessory/Included parts:
Toroidal transformer (excl.)

Note:
Can be walked on!
Only suitable for cavity wall and ceiling installations.
Operate only with toroidal transformer!

Versions:
alu anodized
LED white
LED warm white

Art. No.:

550671
550672

£19.90







KALU RECESSED 1

12~



Socket/Bulb:
G53/QRB111 (excl.)
50W max.

Material:
Aluminium

Dimensions:
L/W/H: 15/9/15 cm
Max. ceiling thickness: 2,5 cm

Accessory/Included parts:
Transformer (excl.)

Complementary products:
Page 042, 125, 127



Versions:
alu brushed

Art. No.:
113406

£49.90

Recommended bulb:
50W, 45°
543545
£7.90



KALU RECESSED 2

12~



Socket/Bulb:
G53/QRB111 (excl.)
2x 50W max.

Material:
Aluminium

Dimensions:
L/W/H: 22/6,8/9 cm
Max. ceiling thickness: 2,5 cm

Accessory/Included parts:
Transformer (excl.)

Complementary products:
Page 042, 125, 127



Versions:
alu brushed

Art. No.:
113416

£99.00

Recommended bulb:
50W, 45°
543545
£7.90



KALU RECESSED 3

12~



Socket/Bulb:
G53/QRB111 (excl.)
3x 50W max.

Material:
Aluminium

Dimensions:
L/W/H: 45/9/15 cm
Max. ceiling thickness: 2,5 cm

Accessory/Included parts:
Transformer (excl.)

Complementary products:
Page 042, 125, 127



Versions:
alu brushed

Art. No.:
113426

£129.00

Recommended bulb:
50W, 45°
543545
£7.90




AIXLIGHT® FLAT SINGLE QRB111


Socket/Bulb:
G53/QRB111 (excl.)
50W max.

Material:
Steel

Dimensions:
L/W/H: 20,5/20,5/9,5 cm
Material thickness fitting surface:
1-2,4 cm

Accessory/Included parts:
Transformer (excl.)

Versions:
chrome/matt black

Art. No.:
154622

£39.90

Recommended bulb:
50W, 45°
543545
£7.90


AIXLIGHT® FLAT DOUBLE QRB111


Socket/Bulb:
G53/QRB111 (excl.)
2x 50W max.

Material:
Steel

Dimensions:
L/W/H: 39/21/9,5 cm
Material thickness fitting surface:
0,5-2,4 cm

Accessory/Included parts:
Transformer (excl.)

Versions:
chrome/matt black

Art. No.:
154632

£69.50

Recommended bulb:
50W, 45°
543545
£7.90


AIXLIGHT® FLAT SINGLE ES111


Socket/Bulb:
GU10/ES111 (excl.)
75W max.

Material:
Steel

Dimensions:
L/W/H: 20,5/20,5/15 cm
Material thickness fitting surface:
1-2,4 cm

Versions:
chrome/matt black

Art. No.:
154602

£49.90

Recommended bulb:
75W, 24°
575672
£12.90


AIXLIGHT® FLAT DOUBLE ES111


Socket/Bulb:
GU10/ES111 (excl.)
2x 75W max.

Material:
Steel

Dimensions:
L/W/H: 39/21/15 cm
Material thickness fitting surface:
0,5-2,4 cm

Versions:
chrome/matt black

Art. No.:
154612

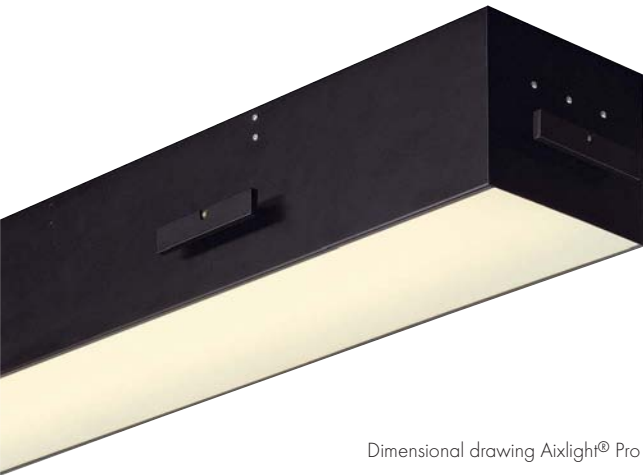
£79.90

Recommended bulb:
75W, 24°
575672
£12.90

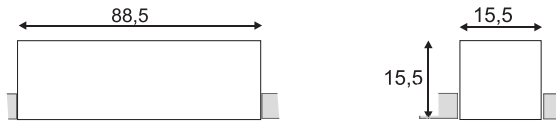








Dimensional drawing Aixlight® Pro T5 Frameless

**AIXLIGHT® PRO T5 FRAMELESS** Design by CDC

230~



Socket/Bulb:
G5/T5 EnergySaver (excl.)
2x 39W

Material:
Steel/acrylic

Dimensions:
L/W/D: 88,5/15,5/15,5 cm
Frame-L/W/D: 92/24,5/7 cm

Accessory/Included parts:
Electronic ballast (incl.)
Frame (incl.)

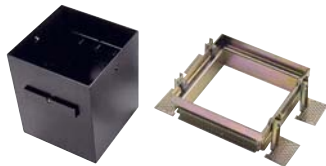
Note:
Suitable for cavity ceilings with a
material thickness of max. 20 mm.

Versions:
black

Recommended bulb:
39W warm white
548039
£9.90 /pce.
(see page 616)

Art. No.:
115250

£249.90

AIXLIGHT® PRO I FRAMELESS Design by CDC

Material:
Steel

Dimensions:
L/W/D: 15,5/15,5/18,5 cm
Frame-L/W/D: 19/24,5/8 cm

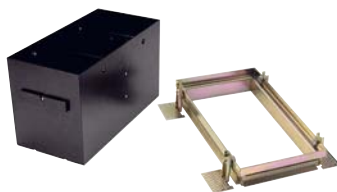
Accessory/Included parts:
Frame (incl.)

Note:
Professional, modular recessed
mounting system for cavity walls
with a material thickness till max.
20 mm.
Suitable for all Aixlight® Pro
modules (see pages 326-329).

Versions:
black

Art. No.:
115151

£69.50

AIXLIGHT® PRO II FRAMELESS Design by CDC

Material:
Steel

Dimensions:
L/W/D: 31,5/15,5/18,5 cm
Frame-L/W/D: 34/24,5/8 cm

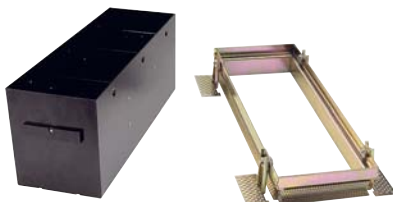
Accessory/Included parts:
Frame (incl.)

Note:
Professional, modular recessed
mounting system for cavity walls
with a material thickness till max.
20 mm.
Suitable for all Aixlight® Pro
modules (see pages 326-329).

Versions:
black

Art. No.:
115152

£99.00

AIXLIGHT® PRO III FRAMELESS Design by CDC

Material:
Steel

Dimensions:
L/W/D: 46,5/15,5/18,5 cm
Frame-L/W/D: 49,5/24,5/8 cm

Accessory/Included parts:
Frame (incl.)

Note:
Professional, modular recessed
mounting system for cavity walls
with a material thickness till max.
20 mm.
Suitable for all Aixlight® Pro
modules (see pages 326-329).

Versions:
black

Art. No.:
115153

£129.00


AIXLIGHT® PRO T5 FRAME Design by CDC

230~



88,5/15,5



18



3,5



Socket/Bulb:
G5/T5 EnergySaver (excl.)
2x 39W

Material:
Steel/acrylic

Dimensions:
L/W/H: 91,3/17,5/15,8 cm

Accessory/Included parts:
Electronic ballast (incl.)

Note:
Suitable for cavity ceilings with
a material thickness of max.
8-29 mm.

Versions:
silver grey/black

Art. No.:
115204

£229.00

Recommended bulb:
39W warm white
548039
£9.90 /pce.
(see page 616)

AIXLIGHT® PRO I FRAME


15,5/15,5



21



1,0



Material:
Steel

Dimensions:
L/W/D: 17,5/17,5/19 cm

Note:
Professional, modular recessed
mounting system for cavity walls
with a material thickness of max.
8-29 mm.
Suitable for all Aixlight® Pro
modules (see pages 326-329).

Versions:
silver grey/black

Art. No.:
115104

£39.90

AIXLIGHT® PRO II FRAME


29,5/15,5



21



1,45



Material:
Steel

Dimensions:
L/W/D: 31,5/17,5/19 cm

Note:
Professional, modular recessed
mounting system for cavity walls
with a material thickness of max.
8-29 mm.
Suitable for all Aixlight® Pro
modules (see pages 326-329).

Versions:
silver grey/black

Art. No.:
115114

£49.90

AIXLIGHT® PRO III FRAME


43,5/15,5



21



1,82



Material:
Steel

Dimensions:
L/W/D: 45,5/17,5/19 cm

Note:
Professional, modular recessed
mounting system for cavity walls
with a material thickness of max.
8-29 mm.
Suitable for all Aixlight® Pro
modules (see pages 326-329).

Versions:
silver grey/black

Art. No.:
115124

£59.50

AIXLIGHT® PRO IV FRAME


30,5/30,5



21



3,5



Material:
Steel

Dimensions:
L/W/D: 32/32/19 cm

Note:
Professional, modular recessed
mounting system for cavity walls
with a material thickness of max.
8-29 mm.
Suitable for all Aixlight® Pro
modules (see pages 326-329).

Versions:
silver grey/black ▼

Art. No.:
115134

£69.50




QRB MODULE for Aixlight® Pro

12-



Socket/Bulb:
G53/QRB111 (excl.)
75W max.

Material:
Aluminium/plastic

Dimensions:
Ø/H: 13,5/6 cm

Accessory/Included parts:
Transformer (excl.)

Note:
For Aixlight® Pro Frame and Aix-
light® Pro Frameless fitting frame.

Versions:
silver grey/black

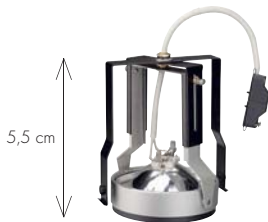
Recommended bulb:
75W, 45°
543745
£7.90

Art. No.:
115004

£19.90


QRB MODULE MOVE for Aixlight® Pro Design by CDC

12-



Socket/Bulb:
G53/QRB111 (excl.)
75W max.

Material:
Aluminium/plastic

Dimensions:
Ø/H: 13,5/17-22,5 cm

Accessory/Lieferumfang:
Transformer (excl.)

Note:
For Aixlight® Pro Frame and Aix-
light® Pro Frameless fitting frame.
Module can be pulled 5,5 cm
out of the housing
see below example of use.

Versions:
silver grey/black

Recommended bulb:
75W, 24°
543724
£7.90

Art. No.:
115074

£29.90

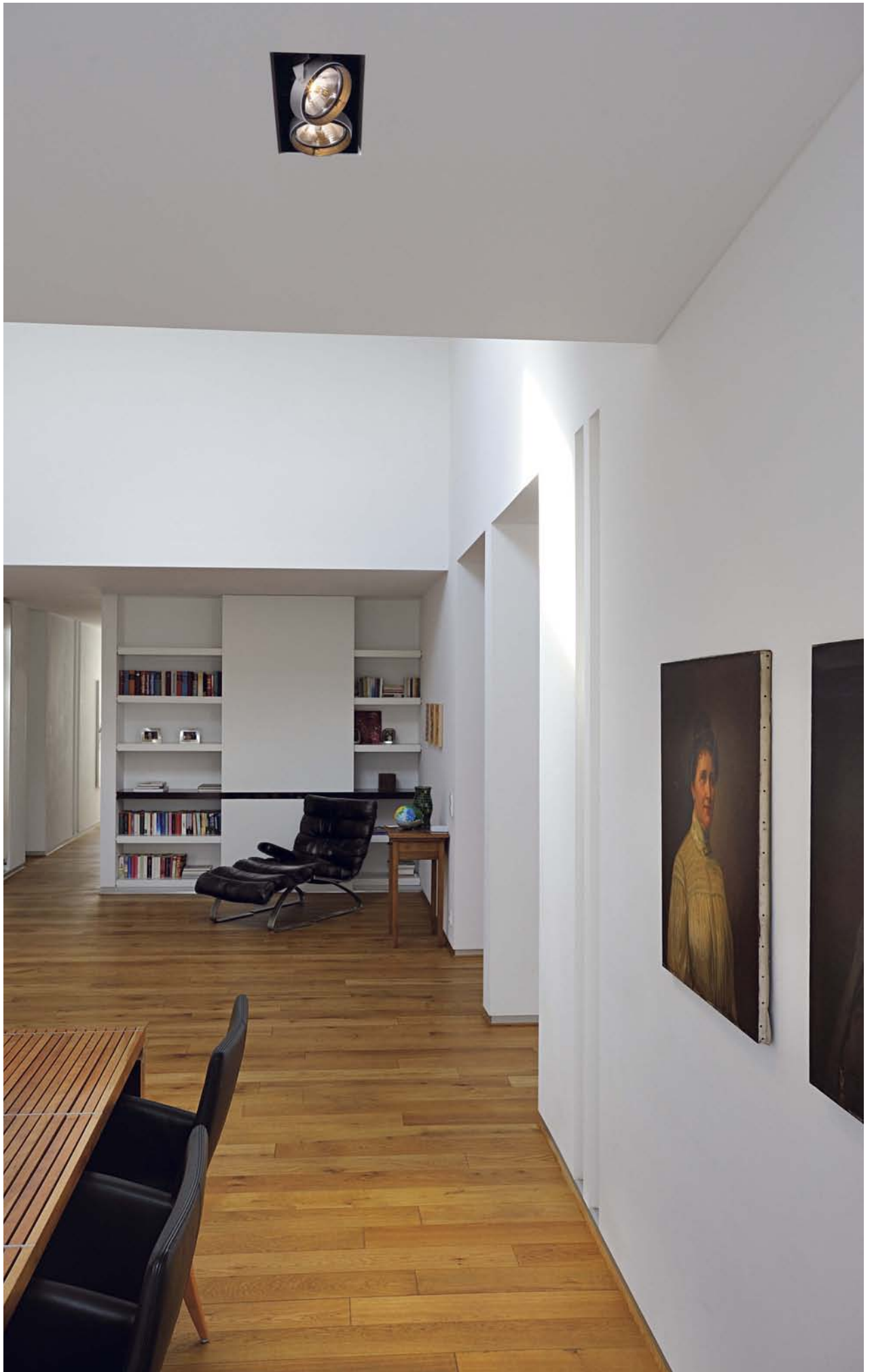


The on pages 326-329 illustrated modules are intended for fitting to the Aixlight® Pro fitting frame (see pages 323-324).

Examples of right using:

Aixlight® Pro I Frame with QRB Module Move and Power LED QRB bulb (550132) see page 607.
Aixlight® Pro II Frameless with QRB Module Move.









ES111 MODULE for Aixlight® Pro

230~



Socket/Bulb:
GU10/ES111 (excl.)
75W max.

Material:
Aluminium/plastic

Dimensions:
Ø/H: 13,5/11,5 cm

Note:
For Aixlight® Pro Frame and Aix-
light® Pro Frameless fitting frame.

Versions:
silver grey/black

Art. No.:
115014

£19.90

Recommended bulb:
75W warm white
575672
£12.90



E27 MODULE for Aixlight® Pro

230~



Socket/Bulb:
E27/PAR30 (excl.)
75W max.
or
E27/CDM-R (excl.)
70W

Material:
Aluminium/plastic

Dimensions:
Ø/H: 13,5/17 cm

Accessory/Included parts:
Electronic ballast (excl.)

Note:
For Aixlight® Pro Frame and Aix-
light® Pro Frameless fitting frame.
When using the bulb CDM-R
you will need a ballast!
Suitable ballasts and HV-cable
see page 584.

Versions:
silver grey/black

Art. No.:
115034

£29.90

Recommended bulb:
75W, 24°
519737
£9.90



BRITESPOT ES111 MODULE for Aixlight® Pro



HiEFFICIENT
PROFIlighT.



Socket/Bulb:
GX10/Britespot ES111 (excl.)
35/70W

Material:
Aluminium/plastic

Dimensions:
Ø/H: 13,5/11,5 cm

Accessory/Included parts:
Electronic ballast (excl.)

Note:
For Aixlight® Pro Frame and Aix-
light® Pro Frameless fitting frame.
Suitable ballasts and HV-cable
see page 584.

Versions:
silver grey/black

Art. No.:
115024

£24.90

Recommended bulb:
70W warm white
506982
£69.50



G12 MODULE for Aixlight® Pro



HiEFFICIENT
PROFIlighT.



Socket/Bulb:
G12/CDM-T; HQI-T (excl.)
35/70W

Material:
Aluminium/plastic

Dimensions:
Ø/H: 13,5/15 cm

Accessory/Included parts:
Ballast (excl.)

Note:
For Aixlight® Pro Frame and Aix-
light® Pro Frameless fitting frame.
Suitable ballasts and HV-cable
see page 584.

Versions:
silver grey 24°
silver grey 58°
silver grey 10°

Art. No.:
115044
115054
115064

£39.90

Recommended bulb:
70W warm white
507180
£39.90



ENERGYSAVER MODULE for Aixlight® Pro Design by CDC

230~



Socket/Bulb:
E27/EnergySaver (excl.)
till max. Ø/L: 5,3/14 cm
21W

Material:
Aluminium/Plastic

Dimensions:
Ø/H: 13,5/18 cm

Note:
For Aixlight® Pro Frame and Aix-
light® Pro Frameless fitting frame.

Versions:
silver grey

Art. No.:
115094

£34.90

Recommended bulb:
15W warm white
508960
£6.90



ACCESSORY for Aixlight® Pro



Structure glass
black
Product-Ø: 10,7 cm

Art. No.:
115170

£6.90

For Aixlight® Pro modules with
the exception of QRB-modules



AIXLIGHT® PRO 50 FRAME I



Material:
Steel

Dimensions:
L/W/H: 10/10/10 cm

Note:
Suitable for all Aixlight® Pro 50 modules (see right).

Versions:
silver grey/black

Art. No.:
115304

£12.90

AIXLIGHT® PRO 50 FRAME II



Material:
Steel

Dimensions:
L/W/H: 17,3/10/10 cm

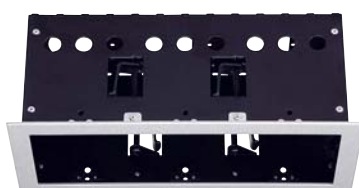
Note:
Suitable for all Aixlight® Pro 50 modules (see right).

Versions:
silver grey/black

Art. No.:
115314

£19.90

AIXLIGHT® PRO 50 FRAME III



Material:
Steel

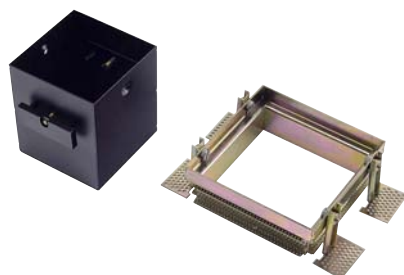
Dimensions:
L/W/H: 24,5/10/10 cm

Note:
Suitable for all Aixlight® Pro 50 modules (see right).

Versions:
silver grey/black ▼

Art. No.:
115324

£24.90

AIXLIGHT® PRO 50 FRAMELESS I Design by CDC

Material:
Steel

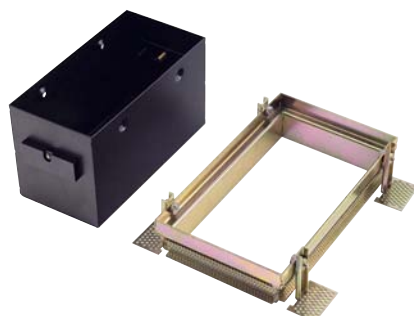
Dimensions:
Visible L/B: 10,2/10,2 cm
Frame-L/W/D: 12/17,5/5 cm

Note:
Suitable for all Aixlight® Pro 50 modules (see right).

Versions:
black

Art. No.:
115351

£59.50

AIXLIGHT® PRO 50 FRAMELESS II Design by CDC

Material:
Steel

Dimensions:
Visible L/B: 18,8/10,2 cm
Frame-L/W/D: 21/17,5/5 cm

Note:
Suitable for all Aixlight® Pro 50 modules (see right).

Versions:
black

Art. No.:
115352

£69.50



Example of use:
Aixlight® Pro 50 Frameless I with MR16 Module Move.

MR16 MODULE for Aixlight® Pro 50

12~



Socket/Bulb:
GU5,3/MR16 (excl.)
50W max.

Material:
Aluminium/plastic

Dimensions:
Ø/H: 7/2,5 cm

Accessory/Included parts:
Transformer (excl.)

Versions:
silver grey/black

Art. No.:
115404

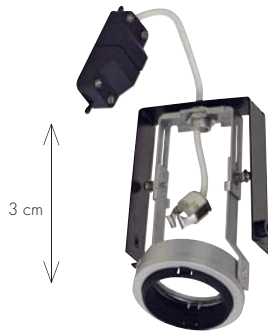
£12.90

Recommended bulb:
50W, 40°
536540
£1.90



MR16 MODULE MOVE for Aixlight® Pro 50

12~



Socket/Bulb:
GU5,3/MR16 (excl.)
50W max.

Material:
Aluminium/Steel

Dimensions:
L/W/H: 6,5/8,5/9,5 cm

Accessory/Included parts:
Transformer (excl.)

Versions:
silver grey

Art. No.:
115434

£29.90

Note:
For Aixlight® Pro Frame and
Aixlight® Pro Frameless Frame.
**Module can be pulled 3 cm out
of the housing.**
See above example of use.

Recommended bulb:
50W, 40°
536540
£1.90



GU10 MODULE for Aixlight® Pro 50

230~



Socket/Bulb:
GU10/GU10 (excl.)
50W max.

Material:
Aluminium/plastic

Dimensions:
Ø/H: 7/2,5 cm

Versions:
silver grey/black

Art. No.:
115414

£14.80

Recommended bulb:
50W warm white
575510
£4.80



GX10 MODULE for Aixlight® Pro 50



HiEFFICIENT
PROFIlight.



Socket/Bulb:
GX10/CMH-MR16 (excl.)
20/35W

Material:
Aluminium/plastic

Dimensions:
Ø/H: 7/2,5 cm

Accessory/Included parts:
Electronic ballast (excl.)

Versions:
silver grey/black

Art. No.:
115424

£24.90

Note:
Suitable ballast and HV-cable
see page 584.

Recommended bulb:
35W warm white 40°
507340
£49.90





CRYSTAL LED



Bulb:
PowerLED (incl.)
1W

Material:
Aluminium/crystal glass

Dimensions:
Visible Ø/H: 7/4 cm
max. ceiling thickness: 1,8 cm

Accessory/Included parts:
LED converter (excl.)

Versions:
LED white
LED warm white

Art. No.:
114821
114822

£34.90

ACLED ROUND



Bulb:
PowerLED (incl.)
1W

Material:
Acrylic

Dimensions:
Visible Ø/H: 5/2 cm

Accessory/Included parts:
LED converter (excl.)

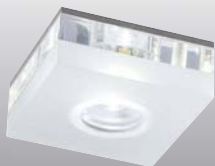
Note:
max. ceiling thickness: 1,8 cm

Versions:
Acrylic partial satin finish
LED white ▼
LED warm white

Art. No.:
114851
114852

£29.90

ACLED SQUARE



Bulb:
PowerLED (incl.)
1W

Material:
Acrylic

Dimensions:
Visible L/W/H: 5/5/2 cm

Accessory/Included parts:
LED converter (excl.)

Note:
max. ceiling thickness: 1,8 cm

Versions:
Acrylic partial satin finish
LED white ▼
LED warm white

Art. No.:
114861
114862

£29.90

NUBLED



Bulb:
PowerLED (incl.)
1W

Material:
Aluminium

Dimensions:
Ø/H: 3,2/1,7 cm
Connection lead-L: 18 cm

Accessory/Included parts:
LED converter (excl.)

Versions:
alu anodized
LED white ▼
LED warm white ▼

Art. No.:
550561
550562

£19.90

SIXLED



Bulb:
PowerLED (incl.)
1W

Material:
Aluminium

Dimensions:
L/W/H: 3/3/1 cm
Connection lead-L: 18 cm

Accessory/Included parts:
LED converter (excl.)

Versions:
alu anodized
LED white ▼
LED warm white ▼

Art. No.:
550551
550552

£17.90

DEKLED



Bulb:
PowerLED (incl.)
1W

Material:
Aluminium/PC

Dimensions:
Cover-Ø/H: 3/0,5 cm
Connection lead-L: 150 cm

Accessory/Included parts:
LED converter (excl.)

Versions:
silver metallic
LED white
LED warm white

Art. No.:
112241
112242

£19.90



LED KONKAV



Bulb: PowerLED (incl.) 1W	Accessory/Included parts: LED converter (excl.)	Versions: alu brushed LED white LED warm white	Art. No.: 114831 114832
Material: Aluminium			£19.90
Dimensions: Visible Ø/H: 4/1 cm Connection lead-L: 50 cm			

RECESS CAN LED



Bulb: PowerLED (incl.) 1W	Accessory/Included parts: Mini-plug (incl.) LED converter (excl.)	Versions: alu brushed LED white ▼ LED warm white ▼	Art. No.: 111918 111919
Material: Aluminium	Note: Suitable connector strip for through wiring (111850) see page 581.		£34.90
Dimensions: Cover-Ø/H: 5/4,8 cm Head-Ø/H: 5/1,6 cm Connection lead-L: 15 cm			

SIMIT 20°



Bulb: PowerLED (incl.) 1W	Accessory/Included parts: Mini-plug (incl.) LED converter (excl.)	Versions: metal brushed LED white LED warm white	Art. No.: 111926 111929
Material: Aluminium	Note: Suitable connector strip for through wiring (111850) see page 581.		£34.90
Dimensions: Ø/H: 4,4/5,5 cm Connection lead-L: 15 cm			

SIMIT 20° adjustable



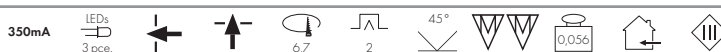
Bulb: PowerLED (incl.) 1W	Accessory/Included parts: Mini-plug (incl.) LED converter (excl.)	Versions: metal brushed LED white LED warm white	Art. No.: 111936 111939
Material: Aluminium	Note: Suitable connector strip for through wiring (111850) see page 581.		£39.90
Dimensions: Ø/H: 5,6/5,5 cm Connection lead-L: 15 cm			

FOCU-LED EYEBALL



Bulb: PowerLED (incl.) 1W	Accessory/Included parts: LED converter (excl.)	Versions: silver metallic/black LED white ▼ LED warm white ▼	Art. No.: 111801 111802
Material: Steel	Note: Focusable with a emitting angle of 15°- 30°.		£39.90
Dimensions: Ø/H: 6,7/5,8 cm Connection lead-L: 15 cm			

FURNITURE LED, ROUND



Bulb: PowerLED (incl.) 3x 1W	Accessory/Included parts: LED converter (excl.)	Versions: silver grey LED white LED warm white	Art. No.: 111821 111822
Material: Aluminium			£49.90
Dimensions: Ø/H: 7,5/1,2 cm Connection lead-L: 48 cm			



LED ALUMINIUM DOWNLIGHT

700mA  1 pce.   5,7  11  25°  0,16  

LED
LEDTEC



Bulb:
PowerLED (incl.)
3W

Material:
Aluminium

Dimensions:
Visible Ø/H: 7,5/1,5 cm

Accessory/Included parts:
LED converter (excl.)

Versions:
alu brushed
LED white
LED warm white

Art. No.:
114801
114802

£39.90

ZEBLED ROUND 3

350mA  3 pce.   4  11  25°  0,13  

LED
LEDTEC



Bulb:
PowerLED (incl.)
3x 1W

Material:
Aluminium

Dimensions:
Visible Ø/H: 7,5/2,5 cm

Accessory/Included parts:
LED converter (excl.)

Note:
max. ceiling thickness: 2,8 cm

Versions:
alu brushed
LED white
LED warm white

Art. No.:
114791
114792

£59.50



Note: When connecting several items shown on this page please use a series connection!

LELEX 1

350mA



1 pce.



60°



5,4



3,5



25°



0,06



Bulb:
PowerLED (incl.)
1W

Material:
Aluminium

Dimensions:
L/W/H: 6/6/2 cm
Connection lead-L: 30 cm

Accessory/Included parts:
Mini-plug (incl.)
LED converter (excl.)

Note:
Operate only with a suitable
converter/driver (e.g. 464108,
464110, 464111) see Page
580. Connector strip (111850)
see page 581.

Versions:
alu brushed
LED white
LED warm white

Art. No.:
111871
111872

£39.90

LEDUSE GROSS

700mA



1 pce.



310°



70°



7,5/7,5



11



25°



0,21



Bulb:
PowerLED (incl.)
3W

Material:
Aluminium

Dimensions:
Visible L/W/H: 10/10/2,5 cm
Max. ceiling thickness: 2 cm

Accessory/Included parts:
LED converter (excl.)

Versions:
alu brushed
LED white
LED warm white

Art. No.:
114621
114622

£49.90



TRITON LED

350mA



Bulb:
PowerLED (incl.)
3x 1W

Material:
Aluminium

Dimensions:
Ø: 8 cm
Connection lead-L: 30 cm

Accessory/Included parts:
Mini-plug (incl.)
LED Driver (excl.)

Note:
Operate only with a suitable
350mA driver (e.g. 464110) see
page 580. Suitable connector
strip (111850 see page 581.
Suitable for cavity walls and
ceilings with a material thickness
of max. 20 mm!

Versions:
silver grey
LED white, 210lm
LED warm white, 150lm

Art. No.:
111851
111852

£69.50

TRITON LED RGB

350mA



Bulb:
RGB PowerLED (incl.)
1x red, green, blue
3x 1W

Material:
Aluminium

Dimensions:
Ø: 8 cm
Connection lead-L: 30 cm

Accessory/Included parts:
Controller (excl.)

Note:
Controllable with e.g. Power LIM®
(470523) see page 579.
Suitable for cavity walls and
ceilings with a material thickness
of max. 20 mm!

Versions:
silver grey
LED RGB

Art. No.:
111853

£79.90



Note: When connecting several items shown on this page please use a series connection!

DomeLED DOWNLIGHT

700mA



Bulb:
PowerLED (incl.)
6x 3W

Material:
Aluminium

Dimensions:
Ø/H: 13,5/6,5 cm

Accessory/Included parts:
LED converter (excl.)

Note:
Recommended driver (464201)
see page 580.

Versions:
silver grey
LED white, 825lm
LED warm white, 615lm

Art. No.:

111961

111962

£129.00

EYEDOWN LED 3x 1W

350mA



Bulb:
PowerLED (incl.)
3x 1W

Material:
Aluminium/glass

Dimensions:
Ø/H: 6,8/4,3 cm
Connection lead-L: 45 cm

Accessory/Included parts:
LED driver (excl.)

Note:
Operate only with 350mA driver
(e.g. 464110) see page 580.
Suitable for cavity ceilings with a
material thickness of max. 30 mm.

Versions:
alu anodized
LED warm white, 190lm

Art. No.:

111982

£79.90

EYEDOWN LED 6x 1W

350mA



Bulb:
PowerLED (incl.)
6x 1W

Material:
Aluminium/glass

Dimensions:
Ø/H: 8,8/5,2 cm
Connection lead-L: 45 cm

Accessory/Included parts:
LED driver (excl.)

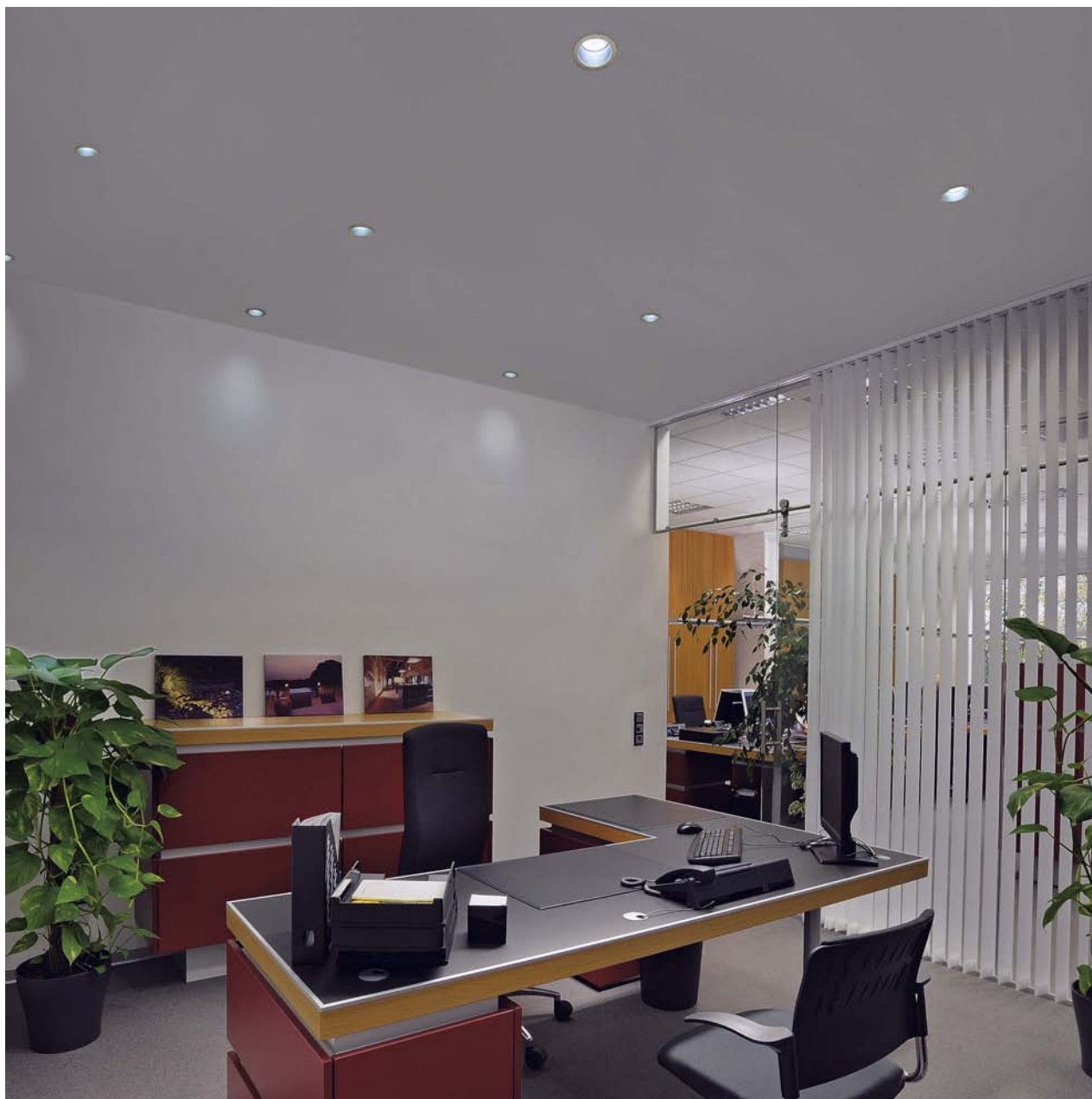
Note:
Operate only with 350mA driver
(e.g. 464110) see page 580.
Suitable for cavity ceilings with a
material thickness of max. 30 mm.

Versions:
alu anodized
LED warm white, 400lm

Art. No.:

111992

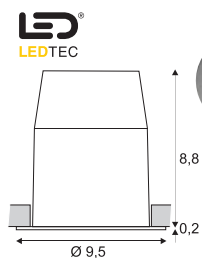
£129.00



LED HORN

700mA LEDs 3 pce. 60° 0,17

LED
LEDTEC



Bulb:
PowerLED (incl.)
3x 3W

Material:
Aluminium

Dimensions:
Ø/H: 9,5/9 cm
Connection lead-L: 50 cm

Accessory/Included parts:
LED converter (excl.)

Note:
Recommended driver (464201)
see page 580.
When connecting several items
please use a series connection!

Versions:

alu	112881
LED white, 300lm	112882
LED warm white, 230lm	
white	
LED white, 300lm	112891
LED warm white, 250lm	112892

Art. No.:

112881
112882
112891
112892

£79.90

DL 123 LED

12= LEDs 24 pce. 80° 0,05

LED
LEDTEC



Bulb:
LED SMD (incl.)
1,7W total

Material:
Aluminium

Dimensions:
Ø/H: 6,5/0,12 cm
Connection lead-L: 120 cm

Accessory/Included parts:
Power unit (excl.)

Note:
Operate only with toroidal
transformer.

Versions:

chrome	111951
LED white	111952
LED warm white	

£29.90



LEDPANEL 100

230~



Bulb:
LED (incl.)
8,5W total

Material:
Plastic

Dimensions:
L/W/D: 15/15/5 cm

Accessory/Included parts:
LED converter (incl.)

Versions:
silver grey
LED white
LED warm white

Art. No.:
160354
160352

£49.90

LEDPANEL ROUND

230~



Bulb:
LED (incl.)
8W total

Material:
Plastic

Dimensions:
Ø/H: 17/5,5 cm

Accessory/Included parts:
LED converter (incl.)

Note:
Suitable for cavity ceilings with a
material thickness of max. 15 mm

Versions:
silver grey
LED white
LED warm white

Art. No.:
160381
160382

white
LED white
LED warm white

160371
160372

£59.50


REAL N-TIC LED SERIES 108x46

24= 6 pce. 8 5 4 120° 0,25 IP66



Bulb:
SMD LED (incl.)
2,8W total

Material:
Cover: Stainless steel 304
chrome plated
Plastic

Dimensions:
Ø/H: 10,8/4,7 cm
Visible-H: 1 cm
Connection lead-L: 1,4 m

Accessory/Included parts:
Power unit (excl.)

Note:
Suitable for cavity walls and
ceilings with a max. thickness of
1-12 mm.

Versions:
chrome
LED white
LED warm white

Art. No.:

112301

112302

£59.50

REAL N-TIC LED SERIES 152x46

24= 12 pce. 12 5 4 120° 0,37 IP66



Bulb:
SMD LED (incl.)
3,8W total

Material:
Cover: Stainless steel 304
chrome plated
Plastic

Dimensions:
Ø/H: 15,2/4,7 cm
Visible-H: 1 cm
Connection lead-L: 1,4 m

Accessory/Included parts:
Power unit (excl.)

Note:
Suitable for cavity walls and
ceilings with a max. thickness of
1-12 mm.

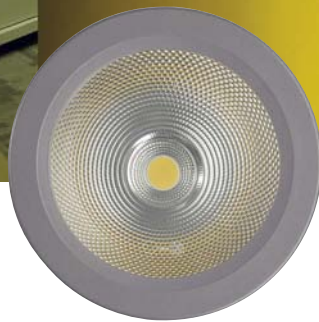
Versions:
chrome
LED white
LED warm white

Art. No.:

112321

112322

£99.00



15W LED DOWNLIGHT

1200mA

**Bulb:**
Planar LED (incl.)
15W**Material:**
Aluminium/steel/glass**Dimensions:**
Ø/H: 17,5/14 cm**Accessory/Included parts:**
LED Converter (excl.)**Note:**
Suitable for cavity ceilings with a
max. thickness of 35 mm.

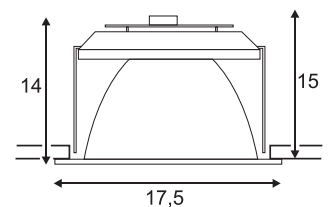
Versions:	Art. No.:
white	
LED white, 1100lm	160401
LED warm white, 750lm	160402
silver grey	
LED white, 1100lm	160411
LED warm white, 750lm	160412

£179.00

ACCESSORY for 15W LED Downlight

230~
mA
1200**Driver**
Operating voltage: 230~
Output: 1x15W
Output current: 1200mA
ta: 50°C, tc: 75°C
L/W/H: 16,5/4/3 cm**Art. No.:**
464210

£49.90





Model Basic

Model Slat

Model Curve

FLAT FRAME



Socket/Bulb:
G4/2pin base (excl.)
20W max.

Material:
Aluminium/glass

Dimensions:
W/H/D: 9/9/3,1 cm

Accessory/Included parts:
Transformer (excl.)

Note:
The models Basic and Slat are suitable for application with the Octagon LED-module.

Versions:
silver grey
Model Basic
Model Slat
Model Curve

Art. No.:
112732
112762
112772

£19.90

Recommended bulb:
20W
512220
£0.90



ACCESSORY for Flat Frames



Fitting box
Plastic black
W/H/D: 8,4/12,3/6,7 cm

Art. No.:
112781
£6.90

Transformer connection external.
Specially for exposed concrete applications.



Recessed frame
Steel bronzed
W/H: 13,5/13,5 cm

Art. No.:
112780
£4.40

Specially for masonry work or flush mounting.



FRAME BASIC JC



Socket/Bulb:
G4/2pin base (excl.)
20W max.

Material:
Aluminium

Dimensions:
W/H/D: 9/9/12 cm

Accessory/Included parts:
Transformer (excl.)

Note:
Suitable for cavity walls and ceilings

Versions:
silver grey

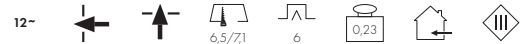
Art. No.:
111202

£19.90

Recommended bulb:
20W
512220
£0.90



FRAME



Socket/Bulb:
G4/2pin base (excl.)
10W max.

Material:
Steel

Dimensions:
W/H/D: 7,5/7,5/5 cm
Wall thickness: > 0,8 cm

Accessory/Included parts:
Transformer (excl.)

Versions:
silver grey
metal brushed

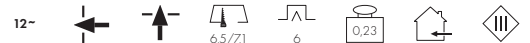
Art. No.:
151871
151878

£14.80

Recommended bulb:
10W
512210
£0.90



FRAME CURVE



Socket/Bulb:
G4/2pin base (excl.)
10W max.

Material:
Steel

Dimensions:
W/H/D: 7,5/7,5/5 cm
Wall thickness: > 0,8 cm

Accessory/Included parts:
Transformer (excl.)

Versions:
silver grey

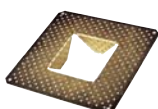
Art. No.:
151862

£19.90

Recommended bulb:
10W
512210
£0.90



ACCESSORY for Frame and Frame Curve



Flush mount frame
Steel bronzed
Outer-W/H: 12/12 cm
Mounting-W/H: 7/6,5 cm
Specifically for fairfaced concrete

Art. No.:
925100

£4.80



FURNITURE TYP 3



Socket/Bulb:
G4/2pin base (excl.)
20W max.

Material:
Steel

Dimensions:
Outer-Ø/D: 6,6/3 cm

Accessory/Included parts:
Transformer (excl.)

Versions:
white
chrome
gold

Art. No.:
116041
116042
116043

£9.90

Recommended bulb:
20W
512220
£0.90



MR11 SP



Socket/Bulb:
G4/MR11 (excl.)
20W max.

Material:
Aluminium

Dimensions:
Cover-Ø: 6,5 cm

Versions:
white
silver grey

Art. No.:
111051
111059

£7.90

Versions:
chrome

Art. No.:
111052

£9.90

Recommended bulb:
20W, 30°
533228
£1.90



Accessory/Included parts:
Transformer (excl.)

SLIM MR16 Design by CDC



Socket/Bulb:
G5,3/MR16 (excl.)
50W max.

Material:
Aluminium

Dimensions:
Cover-Ø: 7 cm

Accessory/Included parts:
Transformer (excl.)

Versions:
alu anodized

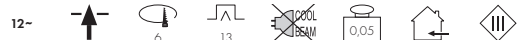
Art. No.:
111308

£19.90

Recommended bulb:
50W, 40°
536540
£1.90



PIKA



Socket/Bulb:
G5,3/MR16 (excl.)
50W max.

Material:
Aluminium

Dimensions:
Cover-Ø: 8 cm

Accessory/Included parts:
Transformer (excl.)



Versions:
white
silver grey
chrome
brass

Art. No.:
111181
111189
111182
111183

£6.90

Recommended bulb:
50W, 40°
536540
£1.90



PIKA, ADJUSTABLE



Socket/Bulb:
G5,3/MR16 (excl.)
50W max.

Material:
Aluminium

Dimensions:
Cover-Ø: 8,5 cm

Accessory/Included parts:
Transformer (excl.)

Versions:
white
silver grey
chrome
brass

Art. No.:
111171
111179
111172
111173

£9.90

Recommended bulb:
50W, 40°
536540
£1.90





DORU

12~



IP65



Socket/Bulb:
G5,3/MR16 (excl.)
20W max.

Material:
Aluminium/glass

Dimensions:
Ø: 8,5 cm

Accessory/Included parts:
Transformer (excl.)

Versions:
alu natural
Glas satin finish

Art. No.:
111432

£24.90

Recommended bulb:
20W, 40°
536240
£1.90



MR16 SP

12~



Socket/Bulb:
G5,3/MR16 (excl.)
50W max.

Material:
Aluminium

Dimensions:
Cover-Ø: 8,2 cm

Accessory/Included parts:
Transformer (excl.)

Versions:
black
white
silver grey

Art. No.:
112090
112091
112099

£9.90

Versions:
chrome
gold
titanium
chrome matt

Art. No.:
112092
112093
112097
112098

£12.90

Recommended bulb:
50W, 40°
536540
£1.90



HORN MR16

12~



Socket/Bulb:
G5,3/MR16 (excl.)
50W max.

Material:
Steel

Dimensions:
Ø/H: 8,3/11,5 cm

Accessory/Included parts:
Transformer (excl.)

Versions:
matt white

Art. No.:
112901

£14.80

Recommended bulb:
50W, 40°
536540
£1.90



FLAT DOWNLIGHT

12~



Socket/Bulb:
GX5,3/MR16 (excl.)
35W max.

Material:
Steel

Dimensions:
Cover-Ø: 8,5 cm
max. wall thickness: 2,5 cm

Accessory/Included parts:
Transformer (excl.)

Versions:
white

Art. No.:
111191

£12.90

Recommended bulb:
35W, 38°
536338
£1.90



FGL OUT

12~



Socket/Bulb:
G5,3/MR16 (excl.)
35W max.

Material:
Aluminium/glass

Dimensions:
Cover-Ø: 8 cm

Accessory/Included parts:
Transformer (excl.)

Versions:
Glas satin finish
white

Art. No.:
111001

£19.90

Versions:
Glas satin finish
chrome
titanium
silver grey

Art. No.:
111002
111007
111008

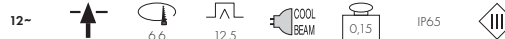
£24.90

Recommended bulb:
35W, 38°
536338
£1.90





CALU



Socket/Bulb:
G5,3/MR16 (excl.)
20W max.

Material:
Aluminium/glass

Dimensions:
Ø: 8,6 cm

Accessory/Included parts:
Transformer (excl.)

Note:
Not suitable for direct mirror
bulbs.

Versions:
alu brushed/varnished
Glas satin finish

Art. No.:
111542

£19.90

Recommended bulb:
20W, 40°
535240
£1.90



TRIA II DOWNLIGHT



Socket/Bulb:
G5,3/MR16 (excl.)
35W max.

Material:
Aluminium

Dimensions:
Cover-Ø: 9 cm

Accessory/Included parts:
Transformer (excl.)

Versions:
white
silver grey

Art. No.:
111441
111449

£9.90

Versions:
chrome
nickel satin finish

Art. No.:
111442
111447

£12.90

Recommended bulb:
35W, 38°
536338
£1.90



NEW TRIA ROUND, MR16



Socket/Bulb:
G5,3/MR16 (excl.)
50W max.

Material:
Aluminium

Dimensions:
Cover-Ø: 9 cm

Accessory/Included parts:
Transformer (excl.)

Versions:
alu brushed
matt white rough

Art. No.:
111274
113500

£19.90

Recommended bulb:
50W, 40°
536540
£1.90



NEW TURNO MR16



Socket/Bulb:
G5,3/MR16 (excl.)
35W max.

Material:
Steel

Dimensions:
Cover-Ø: 9,4 cm

Accessory/Included parts:
Transformer (excl.)

Versions:
white

Art. No.:
112831
£5.95

Versions:
chrome
old brass
titanium
metal brushed
silver grey

Art. No.:
112832
112834
112837
112838
112839

£7.90

Recommended bulb:
50W, 40°
536540
£1.90



AUSTRATURN



Socket/Bulb:
G5,3/MR16 (excl.)
50W max.

Material:
Aluminium

Dimensions:
Cover-Ø: 10,2 cm

Accessory/Included parts:
Transformer (excl.)

Versions:
white

Art. No.:
112061
£14.80

Versions:
chrome
brass
titanium
chrome matt
silver grey

Art. No.:
112062
112063
112067
112068
112069

£14.80

Recommended bulb:
50W, 40°
536540
£1.90





LIGHTEYE MR16



Socket/Bulb:
G5,3/MR16 (excl.)
50W max.

Versions:
white ▼

Art. No.:
112041
£9.90

Versions:
chrome ▼
gold ▼
metal brushed ▼

Art. No.:
112042
112043
112048

Material:
Steel

Dimensions:
Cover-Ø: 11 cm

Accessory/Included parts:
Transformer (excl.)

Recommended bulb:
50W, 40°
536540
£1.90



LUZO 2



Socket/Bulb:
G5,3/MR16 (excl.)
50W max.

Versions:
white
silver grey

Art. No.:
113311
113319
£19.90

Versions:
chrome matt
metal brushed

Art. No.:
113317
113318

Material:
Aluminium/glass

Dimensions:
Cover-Ø: 11,5 cm

Accessory/Included parts:
Transformer (excl.)

Recommended bulb:
50W, 40°
536540
£1.90



GIMBLE ROUND MR16



Socket/Bulb:
G5,3/MR16 (excl.)
50W max.

Versions:
white
silver grey

Art. No.:
112151
112158
£24.90

Versions:
chrome
chrome matt

Art. No.:
112152
112157

Material:
Aluminium

Dimensions:
Cover-Ø: 11,5 cm

Accessory/Included parts:
Transformer (excl.)

Recommended bulb:
50W, 40°
536540
£1.90



SQUARE



Socket/Bulb:
G5,3/MR16 (excl.)
50W max.

Versions:
white
silver grey

Art. No.:
113201
113209
£12.90

Versions:
chrome
gold
titanium
chrome matt

Art. No.:
113202
113203
113207
113208

Material:
Aluminium

Dimensions:
Cover-L/W: 8,7/8,7 cm

Accessory/Included parts:
Transformer (excl.)

Recommended bulb:
50W, 40°
536540
£1.90



FGL OUT SQUARE



Socket/Bulb:
G5,3/MR16 (excl.)
35W max.

Versions:
Glas satin finish
white

Art. No.:
111121
£19.90

Versions:
Glas satin finish
chrome
titanium
silver grey

Art. No.:
111122
111127
111128

Material:
Aluminium/glass

Dimensions:
Cover-W/L: 8,9/8,9 cm

Accessory/Included parts:
Transformer (excl.)

Recommended bulb:
35W, 38°
536338
£1.90





NICETUBE 1



Socket/Bulb:
GU5,3/MR16 (excl.)
35W max.

Material:
Aluminium

Dimensions:
Visible L/W/H: 10/10/3 cm

Accessory/Included parts:
Transformer (excl.)

Versions:
alu brushed

Art. No.:
114951

£29.90

Recommended bulb:
50W, 40°
536540
£1.90



NICETUBE 2



Socket/Bulb:
GU5,3/MR16 (excl.)
2x 35W max.

Material:
Aluminium

Dimensions:
Visible L/W/H: 17/10/3 cm

Accessory/Included parts:
Transformer (excl.)

Versions:
alu brushed

Art. No.:
114952

£59.50

Recommended bulb:
50W, 40°
536540
£1.90





NEW TRIA I, MR16



Socket/Bulb:
G5,3/MR16 (excl.)
50W max.

Material:
Aluminium

Dimensions:
L/W/H: 9/9/13 cm

Accessory/Included parts:
Transformer (excl.)

Versions:
alu brushed
matt white rough

Art. No.:
111351
113501

£19.90

Recommended bulb:
50W, 40°
536540
£1.90



NEW TRIA II, MR16



Socket/Bulb:
G5,3/MR16 (excl.)
2x 50W max.

Material:
Aluminium

Dimensions:
L/W/H: 17/9/13 cm

Accessory/Included parts:
Transformer (excl.)

Versions:
alu brushed

Art. No.:
111352

£39.90

Recommended bulb:
50W, 40°
536540
£1.90



NEW TRIA III, MR16



Socket/Bulb:
G5,3/MR16 (excl.)
3x 50W max.

Material:
Aluminium

Dimensions:
L/W/H: 25,5/9/13 cm

Accessory/Included parts:
Transformer (excl.)

Versions:
alu brushed

Art. No.:
111353

£59.50

Recommended bulb:
50W, 40°
536540
£1.90



ROW 1 MR16



Socket/Bulb:
G5,3/MR16 (excl.)
50W max.

Material:
Aluminium

Dimensions:
Cover-L/W: 11/11 cm

Accessory/Included parts:
Transformer (excl.)

Versions:
silver grey

Art. No.:
112531

£19.90

white 112631

£17.90

Recommended bulb:
50W, 40°
536540
£1.90



ROW 2 MR16



Socket/Bulb:
G5,3/MR16 (excl.)
2x 50W max.

Material:
Aluminium

Dimensions:
Cover-L/W: 20/11 cm

Accessory/Included parts:
Transformer (excl.)

Versions:
silver grey

Art. No.:
112532

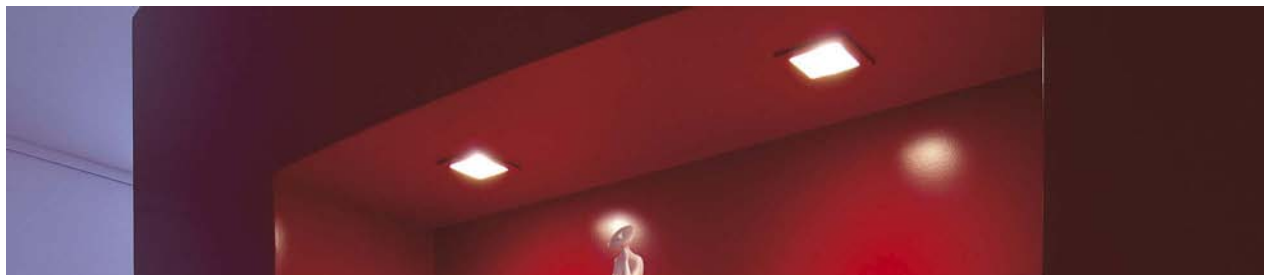
£39.90

white 112632

£34.90

Recommended bulb:
50W, 40°
536540
£1.90





FRAME BASIC MR16



Socket/Bulb:
G5,3/MR16 (excl.)
50W max.

Material:
Aluminium

Dimensions:
W/H/D: 9/9/12 cm

Accessory/Included parts:
Transformer (excl.)

Note:
Suitable for cavity walls and ceilings!

Versions:
silver grey

Recommended bulb:
50W, 40°
536540
£1.90

Art. No.:
111222

£19.90



FRAME DISTA MR16



Socket/Bulb:
G5,3/MR16 (excl.)
35W max.

Material:
Aluminium/glass

Dimensions:
W/H/D: 9/9/12,5 cm

Accessory/Included parts:
Transformer (excl.)

Note:
Suitable for cavity walls and ceilings!

Versions:
silver grey

Recommended bulb:
35W, 38°
536338
£1.90

Art. No.:
111232

£19.90



INDI REC 1S, CARDANIC



Socket/Bulb:
G5,3/MR16 (excl.)
50W max.

Material:
Steel

Dimensions:
L/W/H: 10/10/11 cm

Accessory/Included parts:
Transformer (excl.)

Note:
Suitable for cavity walls and ceilings with a material thickness of 0,5-20 mm.

Versions:
silver grey/black

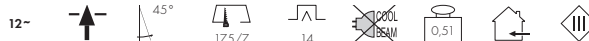
Recommended bulb:
50W, 40°
536540
£1.90

Art. No.:
112444

£14.80



INDI REC 1F



Socket/Bulb:
G5,3/MR16 (excl.)
50W max.

Material:
Steel

Dimensions:
L/W/H: 18/9/13,5 cm

Accessory/Included parts:
Transformer (excl.)

Note:
Suitable for cavity walls and ceilings with a material thickness of 0,5-20 mm.

Versions:
silver grey/black

Recommended bulb:
50W, 40°
536540
£1.90

Art. No.:
112454

£14.80



INDI REC 2S



Socket/Bulb:
G5,3/MR16 (excl.)
2x 35W max.

Material:
Steel

Dimensions:
L/W/H: 18/9/13,5 cm

Accessory/Included parts:
Transformer (excl.)

Note:
Suitable for cavity walls and ceilings with a material thickness of 0,5-20 mm.

Versions:
silver grey/black

Recommended bulb:
35W, 38°
536338
£1.90

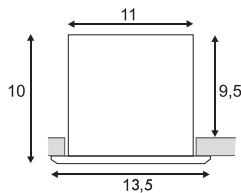
Art. No.:
112464

£19.90





AIXLIGHT® MOD 1 MR16



Socket/Bulb:
GU5,3/MR16 (excl.)
50W max.

Material:
Front aluminium

Dimensions:
L/W/H: 13,5/13,5/10 cm

Accessory/Included parts:
Transformer (excl.)

Versions:
cream white matt ▼
silver grey

Art. No.:
154111
154112

£29.90

Recommended bulb:
50W, 40°
536540
£1.90



AIXLIGHT® MOD 2 MR16



Socket/Bulb:
GU5,3/MR16 (excl.)
2x 50W max.

Material:
Front aluminium

Dimensions:
L/W/H: 24/13,5/10 cm

Accessory/Included parts:
Transformer (excl.)

Versions:
cream white matt ▼
silver grey

Art. No.:
154121
154122

£49.90

Recommended bulb:
50W, 40°
536540
£1.90



AIXLIGHT® MOD 3 MR16



Socket/Bulb:
GU5,3/MR16 (excl.)
3x 50W max.

Material:
Front aluminium

Dimensions:
L/W/H: 35/13,5/10 cm

Accessory/Included parts:
Transformer (excl.)

Versions:
cream white matt ▼
silver grey

Art. No.:
154131
154132

£69.50

Recommended bulb:
50W, 40°
536540
£1.90



AIXLIGHT® MOD 4 MR16



Socket/Bulb:
GU5,3/MR16 (excl.)
4x 50W max.

Material:
Front aluminium

Dimensions:
L/W/H: 23/23/10 cm

Accessory/Included parts:
Transformer (excl.)

Versions:
cream white matt ▼
silver grey

Art. No.:
154141
154142

£89.50

Recommended bulb:
50W, 40°
536540
£1.90





LIGHT POINT

12~



Socket/Bulb:
G4/2pin base (excl.)
10W max.

Material:
Aluminium

Dimensions:
Cover-Ø: 3 cm

Accessory/Included parts:
Transformer (excl.)

Note:
Conversion to LED technics by using the bulb G4 LED Super Flux and G4 High Power LED see page 604.
Operate only with a toroidal transformer.

Versions:
With open cable end.
white
chrome
gold

Art. No.:
118011
118012
118013

£3.95

Recommended bulb:
10W
512210
£0.90



GLADOS, SQUARE

12~



Socket/Bulb:
G6,35/2pin base (excl.)
35W max.

Material:
Aluminium/glass

Dimensions:
L/W/H: 8/8/4 cm
Glass-H: 2 cm

Accessory/Included parts:
Transformer (excl.)

Versions:
chrome
Glass satin finish

Art. No.:
111512

£19.90

Recommended bulb:
35W
512235
£0.90



GLADOS, ROUND

12~



Socket/Bulb:
G6,35/2pin base (excl.)
35W max.

Material:
Aluminium/glass

Dimensions:
Ø/H: 8,5/4 cm
Glass-H: 2 cm

Accessory/Included parts:
Transformer (excl.)

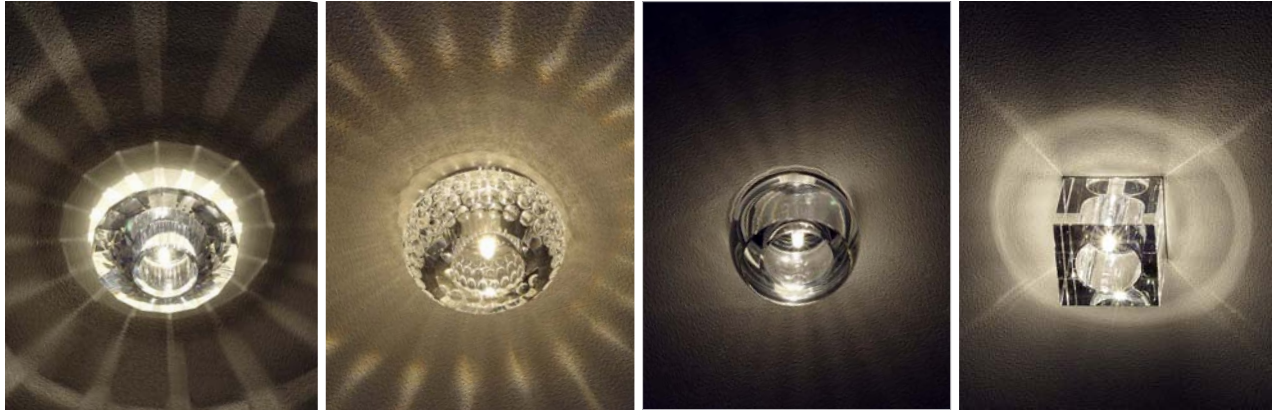
Versions:
chrome
Glass satin finish

Art. No.:
111502

£19.90

Recommended bulb:
35W
512235
£0.90





CRYSTAL VII

12~



Socket/Bulb:
G4/2pin base (excl.)
20W max.

Material:
Steel/crystal glass

Dimensions:
Visible Ø/H: 11/5 cm

Accessory/Included parts:
Transformer (excl.)

Versions:
chrome
Crystal clear

Art. No.:
114927

£34.90

Recommended bulb:
20W
512220
£0.90



CRYSTAL VIII

12~



Socket/Bulb:
G4/2pin base (excl.)
20W max.

Material:
Glass

Dimensions:
Visible Ø/H: 9,7/5 cm

Accessory/Included parts:
Transformer (excl.)

Note:
Suitable for cavity ceilings with a
material thickness of max. 15 mm.

Versions:
Crystal clear

Art. No.:
114931

£39.90

Recommended bulb:
20W
512220
£0.90



CRYSTAL VI

12~



Socket/Bulb:
G4/2pin base (excl.)
20W max.

Material:
Steel/crystal glass

Dimensions:
Visible Ø/H: 9,5/6 cm

Accessory/Included parts:
Transformer (excl.)

Versions:
chrome
Crystal clear

Art. No.:
114926

£34.90

Recommended bulb:
20W
512220
£0.90



YUDI

12~



Socket/Bulb:
G6,35/2pin base (excl.)
35W max.

Material:
Crystal glass

Dimensions:
Visible L/W/H: 7/7/6,1 cm

Accessory/Included parts:
Transformer (excl.)

Versions:
clear

Art. No.:
114961

£24.90

half clear/black
half clear/amber

114960

114962

£29.90

Recommended bulb:
35W
512235
£0.90





CRYSTAL I



Socket/Bulb:
GU5,3/MR16 (excl.)
35W max.

Material:
Steel/crystal glass

Dimensions:
Visible L/W/H:
10,2/10,2/2,7 cm

Accessory/Included parts:
Transformer (excl.)

Versions:
chrome
Crystal clear

Art. No.:
114920

£29.90

Recommended bulb:
35W, 38°
535338
£1.90



CRYSTAL II



Socket/Bulb:
GU5,3/MR16 (excl.)
35W max.

Material:
Steel/crystal glass

Dimensions:
Visible Ø/H: 10/2,7 cm

Accessory/Included parts:
Transformer (excl.)

Versions:
chrome
Crystal clear

Art. No.:
114921

£34.90

Recommended bulb:
35W, 38°
535338
£1.90



CRYSTAL IV



Socket/Bulb:
GU5,3/MR16 (excl.)
35W max.

Material:
Aluminium/crystal glass

Dimensions:
Visible Ø/H: 9,2/2,8 cm

Accessory/Included parts:
Transformer (excl.)

Versions:
metal brushed
Crystal clear

Art. No.:
114923

£34.90

Recommended bulb:
35W, 38°
535338
£1.90



GRID Design by CDC



Socket/Bulb:
GY6,35/2pin base (excl.)
50W max.

Material:
Aluminium

Dimensions:
Visible Ø/H: 7/7 cm

Accessory/Included parts:
Transformer (excl.)

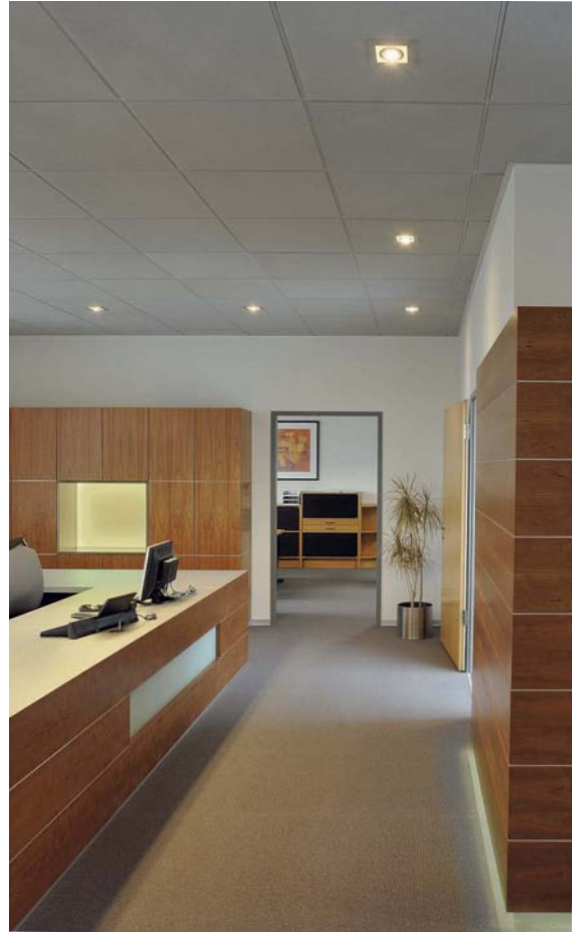
Versions:
alu natural

Art. No.:
134234

£19.90

Recommended bulb:
50W
512250
£0.90





TWISTER

12-



Socket/Bulb:
G5,3/MR16 (excl.)
50W max.

Material:
Aluminium/glass

Dimensions:
L/W/H: 7/7/3 cm

Accessory/Included parts:
Transformer (excl.)

Versions:
chrome
Glass satin finish

Art. No.:
111112

£14.80

Recommended bulb:
50W, 40°
536540
£1.90



NICELIGHT 1

12-



Socket/Bulb:
GX5,3/MR16 (excl.)
50W max.

Material:
Aluminium/glass

Dimensions:
Visible L/W/H: 13/13/0,5 cm

Accessory/Included parts:
Transformer (excl.)

Versions:
alu brushed

Art. No.:
114941

£39.90

Recommended bulb:
50W, 40°
536540
£1.90



GLIDE MR16

12-



Socket/Bulb:
G5,3/MR16 (excl.)
50W

Material:
Aluminium/glass

Dimensions:
L/W/H: 13/9/2 cm

Accessory/Included parts:
Transformer (excl.)

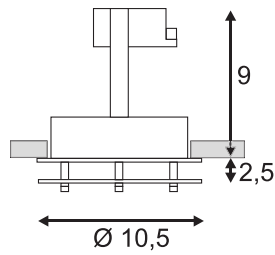
Versions:
alu brushed
Glass partial satin finish

Art. No.:
114930

£29.90

Recommended bulb:
50W, 40°
536540
£1.90





Dimensional drawing Redit MR16



REDIT MR16

12~



Socket/Bulb:
G3,5/MR16 (excl.)
50W max.

Material:
Aluminium/glass

Dimensions:
Ø/H: 10,5/11,5 cm
Visible Ø/H: 10,5/2,5 cm

Accessory/Included parts:
Transformer (excl.)

Note:
Suitable for cavity ceilings with a material thickness of 5-20 mm.

Versions:
white
Glass partial satin finish

Art. No.:
111601

£24.90

Recommended bulb:
50W, 40°
536540
£1.90



BAGUS

12~



Socket/Bulb:
GU5,3/MR16 (excl.)
35W max.

Material:
Aluminium/glass

Dimensions:
Cover-Ø/H: 9,5/1,5 cm

Accessory/Included parts:
Transformer (excl.)

Versions:
chrome
Glass satin finish

Art. No.:
111532

£19.90

Recommended bulb:
35W, 38°
536338
£1.90



DISC DOWNLIGHT

12~



Socket/Bulb:
GU5,3/MR16 (excl.)
50W max.

Material:
Glass/steel

Dimensions:
Cover-Ø: 10 cm

Accessory/Included parts:
Transformer (excl.)

Versions:
white

Art. No.:
114701

£14.80

Recommended bulb:
50W, 40°
536540
£1.90



SATINA

12~



Socket/Bulb:
G5,3/MR16 (excl.)
50W max.

Material:
Glass

Dimensions:
Cover-Ø: 12 cm

Accessory/Included parts:
Transformer (excl.)

Versions:
white

Art. No.:
114901

£19.90

Recommended bulb:
50W, 40°
536540
£1.90





SLIM QRB111 Design by CDC

12~



Socket/Bulb:
G53/QRB111 (excl.)
100W max.

Material:
Aluminium

Dimensions:
Cover-Ø: 13 cm

Accessory/Included parts:
Transformer (excl.)

Versions:
alu anodized

Art. No.:
111338

£29.90

Recommended bulb:
75W, 45°
543745
£7.90



BERET QRB

12~



Socket/Bulb:
G53/QRB111 (excl.)
75W

Material:
Aluminium

Dimensions:
Ø/H: 16,5/12 cm

Accessory/Included parts:
Transformer (excl.)

Versions:
white
silver grey

Art. No.:
162181
162184

£59.50

Note:
Suitable for cavity ceilings with a material thickness of max. 25 mm
With quick release fastener for changing the bulb.

Recommended bulb:
75W, 45°
543745
£7.90



NEW TRIA, ROUND, QRB111

12~



Socket/Bulb:
G53/QRB111 (excl.)
75W max.

Material:
Aluminium

Dimensions:
Cover-Ø: 16,5 cm

Accessory/Included parts:
Transformer (excl.)

Versions:
alu brushed
matt white rough

Art. No.:
111370
113530

£39.90

Recommended bulb:
75W, 45°
543745
£7.90



HORN QRB111

12~



Socket/Bulb:
G53/QRB111 (excl.)
75W max.

Material:
Steel

Dimensions:
Ø/H: 17,2/12,5 cm

Accessory/Included parts:
Transformer (excl.)

Versions:
matt white

Art. No.:
112931

£29.90

Recommended bulb:
75W, 45°
543745
£7.90



LIGHTEYE TUBE QRB111 Downlight Design by CDC

12~



Socket/Bulb:
G53/QRB111 (excl.)
75W max.

Material:
Steel

Dimensions:
Ø/H: 20/23 cm

Accessory/Included parts:
Transformer (excl.)

Versions:
white/chrome ▼

Art. No.:
113011

£69.50

chrome ▼ 113012

£79.90

Recommended bulb:
75W, 24°
543724
£7.90





ROW QRB111



Socket/Bulb:
G53/QRB111 (excl.)
50W max.

Material:
Aluminium/steel

Dimensions:
Cover-L/W: 18/18 cm

Accessory/Included parts:
Housing (incl.)
Transformer (excl.)

Versions:
silver grey

Art. No.:
112550

£49.90

Recommended bulb:
50W, 45°
543545
£7.90



NEW TRIA I, QRB111



Socket/Bulb:
G53/QRB111 (excl.)
75W max.

Material:
Aluminium

Dimensions:
L/W/H: 16,5/16,5/12,5 cm

Accessory/Included parts:
Transformer (excl.)

Versions:
alu brushed
matt white rough

Art. No.:
111371
113531

£39.90

Recommended bulb:
75W, 45°
543745
£7.90



NEW TRIA II, QRB111



Socket/Bulb:
G53/QRB111 (excl.)
2x 75W max.

Material:
Aluminium

Dimensions:
L/W/H: 31,5/16,5/12,5 cm

Accessory/Included parts:
Transformer (excl.)

Versions:
alu brushed

Art. No.:
111372

£79.90

Recommended bulb:
75W, 45°
543745
£7.90



NEW TRIA III, QRB111



Socket/Bulb:
G53/QRB111 (excl.)
3x 75W max.

Material:
Aluminium

Dimensions:
L/W/H: 46,5/16,5/12,5 cm

Accessory/Included parts:
Transformer (excl.)

Versions:
alu brushed

Art. No.:
111373

£99.00

Recommended bulb:
75W, 45°
543745
£7.90





AIXLIGHT® MOD 1 QRB111



Socket/Bulb:
G53/QRB111 (excl.)
50W max.

Accessory/Included parts:
Transformer (excl.)

Versions:
cream white matt ▼
silver grey

Art. No.:
154011
154012

Material:
Front aluminium

£39.90

Dimensions:
L/W/H: 20,5/20,5/10 cm

Recommended bulb:
50W, 45°
543545
£7.90



AIXLIGHT® MOD 2 QRB111



Socket/Bulb:
G53/QRB111 (excl.)
2x 50W max.

Accessory/Included parts:
Transformer (excl.)

Versions:
cream white matt ▼
silver grey

Art. No.:
154021
154022

Material:
Front aluminium

£64.50

Dimensions:
L/W/H: 39/20,5/10 cm

Recommended bulb:
50W, 45°
543545
£7.90



AIXLIGHT® MOD 3 QRB111



Socket/Bulb:
G53/QRB111 (excl.)
3x 50W max.

Accessory/Included parts:
Transformer (excl.)

Versions:
cream white matt ▼
silver grey

Art. No.:
154031
154032

Material:
Front aluminium

£89.50

Dimensions:
L/W/H: 52/20,5/10 cm

Recommended bulb:
50W, 45°
543545
£7.90



AIXLIGHT® MOD 4 QRB111



Socket/Bulb:
G53/QRB111 (excl.)
4x 50W max.

Accessory/Included parts:
Transformer (excl.)

Versions:
cream white matt ▼
silver grey

Art. No.:
154041
154042

Material:
Front aluminium

£119.00

Dimensions:
L/W/H: 36/36/10 cm

Recommended bulb:
50W, 45°
543545
£7.90







SLIM GU10 Design by CDC

230~



Socket/Bulb:
GU10/GU10 (excl.)
35W max.

Material:
Aluminium

Dimensions:
Cover-Ø: 7 cm

Versions:
alu anodized

Art. No.:
111318

£19.90

Recommended bulb:
35W warm white
575351
£4.80



GU10 SP

230~



Socket/Bulb:
GU10/GU10 (excl.)
50W max.

Material:
Aluminium

Dimensions:
Cover-Ø: 8,2 cm

Versions:
white
silver grey

Art. No.:
116111
116119

£15.95

Versions:
chrome
titanium
chrome matt

Art. No.:
116112
116117
116118

£17.90

Recommended bulb:
50W warm white
575510
£4.80



HORN GU10

230~



Socket/Bulb:
GU10/GU10 (excl.)
50W max.

Material:
Steel

Dimensions:
Ø/H: 8,3/11,5 cm

Versions:
matt white

Art. No.:
112911

£14.80

Recommended bulb:
50W warm white
575510
£4.80



NEW TRIA, ROUND, GU10

230~



Socket/Bulb:
GU10/GU10 (excl.)
50W max.

Material:
Aluminium

Dimensions:
Cover-Ø: 9 cm

Versions:
alu brushed
matt white rough

Art. No.:
111360
113510

£24.90

Recommended bulb:
50W warm white
575510
£4.80



TURNO GU10

230~



Socket/Bulb:
GU10/GU10 (excl.)
50W max.

Material:
Steel

Dimensions:
Cover-Ø: 9,5 cm

Versions:
white

Art. No.:
116101
£12.90

Versions:
chrome
chrome matt

Art. No.:
116102
116107

£14.80

Recommended bulb:
50W warm white
575510
£4.80





INDI REC 1S GU10



Socket/Bulb:
GU10/GU10 (excl.)
50W max.

Material:
Steel

Dimensions:
L/W/H: 10/10/11 cm

Note:
Suitable for cavity walls and
ceilings with a material thickness
of 0,5-20 mm.

Versions:
silver grey/black

Art. No.:
112474

£14.80

Recommended bulb:
50W warm white
575510
£4.80



AIXLIGHT® MOD 1 GU10



Socket/Bulb:
GU10/GU10 (excl.)
50W max.

Material:
Front aluminium

Dimensions:
L/W/H: 13,5/13,5/11,5 cm

Versions:
silver grey

Art. No.:
154552

£29.90

Recommended bulb:
50W warm white
575510
£4.80



AIXLIGHT® MOD 2 GU10



Socket/Bulb:
GU10/GU10 (excl.)
2x 50W max.

Material:
Front aluminium

Dimensions:
L/W/H: 28,5/13,5/11,5 cm

Versions:
silver grey

Art. No.:
154562

£49.90

Recommended bulb:
50W warm white
575510
£4.80



AIXLIGHT® MOD 3 GU10



Socket/Bulb:
GU10/GU10 (excl.)
3x 50W max.

Material:
Front aluminium

Dimensions:
L/W/H: 40,5/13,5/11,5 cm

Versions:
silver grey

Art. No.:
154572

£69.50

Recommended bulb:
50W warm white
575510
£4.80



AIXLIGHT® MOD 4 GU10



Socket/Bulb:
GU10/GU10 (excl.)
4x 50W max.

Material:
Front aluminium

Dimensions:
L/W/H: 23/23/11,5 cm

Versions:
silver grey

Art. No.:
154582

£89.50

Recommended bulb:
50W warm white
575510
£4.80







FRAME BASIC GU10



Socket/Bulb:
GU10/GU10 (excl.)
50W max.

Note:
Suitable for cavity walls and ceilings!

Versions:
silver grey

Art. No.:
111242

Material:
Aluminium

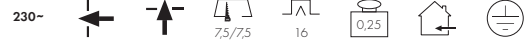
Recommended bulb:
50W warm white
575510
£4.80



Dimensions:
W/H/D: 9/9/15 cm

£19.90

FRAME DISTA GU10



Socket/Bulb:
GU10/GU10 (excl.)
50W max.

Note:
Suitable for cavity walls and ceilings!

Versions:
silver grey

Art. No.:
111252

Material:
Aluminium/glass

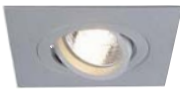
Recommended bulb:
50W warm white
575510
£4.80



Dimensions:
W/H/D: 9/9/15,5 cm

£19.90

ROW 1 GU10



Socket/Bulb:
GU10/GU10 (excl.)
50W max.

Note:
Suitable for cavity walls and ceilings!

Versions:
silver grey
white

Art. No.:
112561
112661

Material:
Aluminium

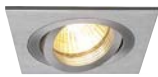
Recommended bulb:
50W warm white
575510
£4.80



Dimensions:
Cover-L/W: 11/11 cm

£19.90

NEW TRIA I, GU10



Socket/Bulb:
GU10/GU10 (excl.)
50W max.

Note:
Suitable for cavity walls and ceilings!

Versions:
alu brushed
matt white rough

Art. No.:
111361
113511

Material:
Aluminium

Recommended bulb:
50W warm white
575510
£4.80



Dimensions:
L/W/H: 9/9/12,5 cm

£24.90

NEW TRIA II, GU10



Socket/Bulb:
GU10/GU10 (excl.)
2x 50W max.

Note:
Suitable for cavity walls and ceilings!

Versions:
alu brushed

Art. No.:
111362

Material:
Aluminium

Recommended bulb:
50W warm white
575510
£4.80



Dimensions:
L/W/H: 17/9/12,5 cm

£49.90

NEW TRIA III, GU10



Socket/Bulb:
GU10/GU10 (excl.)
3x 50W max.

Note:
Suitable for cavity walls and ceilings!

Versions:
alu brushed

Art. No.:
111363

Material:
Aluminium

Recommended bulb:
50W warm white
575510
£4.80



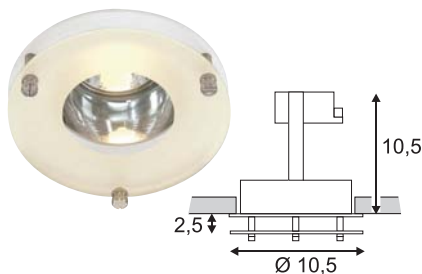
Dimensions:
L/W/H: 25,5/9/12,5 cm

£69.50



REDIT GU10

230~



Socket/Bulb:
GU10/GU10 (excl.)
35W max.

Note:
Suitable for cavity ceilings with a
material thickness of 5-20 mm.

Versions:
white
Glass partial satin finish

Art. No.:

111611

£24.90

Recommended bulb:
35W warm white
575351
£4.80



DICHRO CUBE

230~



Socket/Bulb:
G9/G9 (excl.)
40W max.

Note:
Suitable for cavity ceilings with a
material thickness of 5-20 mm.

Versions:
dichroic

Art. No.:

114928

£29.90

Material:
Glass

Recommended bulb:
40W
519340
£3.45



Dimensions:
Visible L/W/H: 8/7,8/6,5 cm

DICHRO TUBE

230~



Socket/Bulb:
G9/G9 (excl.)
40W max.

Note:
Suitable for cavity ceilings with a
material thickness of 5-20 mm.

Versions:
dichroic

Art. No.:

114925

£39.90

Material:
Glass

Recommended bulb:
40W
519340
£3.45



Dimensions:
Visible Ø/H: 8/6,4 cm


LIGHTEYE TUBE ES111 Downlight Design by CDC

230~



Socket/Bulb:
GU10/ES111 (excl.)
75W max.

Material:
Steel

Dimensions:
Ø/H: 20/23 cm

Versions:
white/chrome ▼

chrome ▼

Art. No.:
113001

£69.50

113002

£79.90

Recommended bulb:
75W warm white
575672
£12.90


SLIM ES111 Design by CDC

230~



Socket/Bulb:
GU10/ES111 (excl.)
75W max.

Material:
Aluminium

Dimensions:
Cover-Ø: 13 cm

Note:
Not suited for DomeLED ES111
bulbs!

Versions:
alu anodized

Recommended bulb:
75W warm white
575672
£12.90



Art. No.:
111328

£29.90

NEW TRIA, ROUND, ES111

230~



Socket/Bulb:
GU10/ES111 (excl.)
75W max.

Material:
Aluminium

Dimensions:
Cover-Ø: 16,5 cm

Versions:
alu brushed
matt white rough

Recommended bulb:
75W warm white
575672
£12.90



Art. No.:
111380

113540

£39.90

BERET ES111

230~



Socket/Bulb:
GU10/ES111 (excl.)
75W max.

Material:
Aluminium

Dimensions:
Ø/H: 16,5/12 cm

Note:
Suitable for cavity ceilings with a
material thickness of max. 25 mm.
With quick release fastener for
changing the bulb.

Versions:
white
silver grey

Recommended bulb:
75W warm white
575672
£12.90



Art. No.:
162191

162194

£59.50

ROW ES111

230~



Socket/Bulb:
GU10/ES111 (excl.)
75W max.

Material:
Aluminium/steel

Dimensions:
Cover-L/W: 18/18 cm

Versions:
silver grey

Recommended bulb:
75W warm white
575672
£12.90



Art. No.:
112553

£49.90





NEW TRIA I, ES111



Socket/Bulb:
GU10/ES111 (excl.)
75W max.

Material:
Aluminium

Dimensions:
L/W/H: 16,5/16,5/12,5 cm

Versions:
alu brushed
matt white rough

Art. No.:
111381
113541

£39.90

Recommended bulb:
75W warm white
575672
£12.90



NEW TRIA II, ES111



Socket/Bulb:
GU10/ES111 (excl.)
2x 75W max.

Material:
Aluminium

Dimensions:
L/W/H: 31,5/16,5/12,5 cm

Versions:
alu brushed

Art. No.:
111382

£79.90

Recommended bulb:
75W warm white
575672
£12.90



NEW TRIA III, ES111



Socket/Bulb:
GU10/ES111 (excl.)
3x 75W max.

Material:
Aluminium

Dimensions:
L/W/H: 46,5/16,5/12,5 cm

Versions:
alu brushed

Art. No.:
111383

£99.00

Recommended bulb:
75W warm white
575672
£12.90



**HORN ES111**

Socket/Bulb:
GU10/ES111 (excl.)
75W max.

Material:
Steel

Dimensions:
Ø/H: 17,2/12,5 cm

Versions:
matt white

Art. No.:
112921

£29.90

Recommended bulb:
75W warm white
575672
£12.90

**TROMP Downlight** Design by CDC

Socket/Bulb:
GU10/ES111 (excl.)
50W max.
and
2GX13/T5-Ring EnergySaver (excl.)
22W

Material:
Plastic PC

Dimensions:
Ø/H: 32/16,5 cm

Accessory/Included parts:
Electronic ballast (incl.)

Note:
ES111 bulb and T5 ring tube can
be individually switched.

Versions:
matt white

Art. No.:
111941

£179.00

Recommended bulb:
50W warm white
575652
£12.90



Recommended bulb:
22W warm white
548220
£29.90





AIXLIGHT® MOD 1 ES111



Socket/Bulb:
GU10/ES111 (excl.)
75W max.

Material:
Front aluminium

Dimensions:
L/W/H: 20,5/20,5/15 cm

Versions:
silver grey

Art. No.:
154052

£42.90

Recommended bulb:
75W warm white
575672
£12.90



AIXLIGHT® MOD 2 ES111



Socket/Bulb:
GU10/ES111 (excl.)
2x 75W max.

Material:
Front aluminium

Dimensions:
L/W/H: 39/20,5/15 cm

Versions:
silver grey

Art. No.:
154062

£69.50

Recommended bulb:
75W warm white
575672
£12.90



AIXLIGHT® MOD 3 ES111



Socket/Bulb:
GU10/ES111 (excl.)
3x 75W max.

Material:
Front aluminium

Dimensions:
L/W/H: 52/20,5/15 cm

Versions:
silver grey

Art. No.:
154072

£99.00

Recommended bulb:
75W warm white
575672
£12.90



AIXLIGHT® MOD 4 ES111



Socket/Bulb:
GU10/ES111 (excl.)
4x 75W max.

Material:
Front aluminium

Dimensions:
L/W/H: 36/36/15 cm

Versions:
silver grey

Art. No.:
154082

£129.00

Recommended bulb:
75W warm white
575672
£12.90





FITTING RING for GX53

230~



Socket/Bulb:
GX53/GX53 EnergySaver (excl.)
9W max.
or LED GX53, 1,2W (excl.)
or PowerLED GX53,
3x 1W (excl.)

Note:
Fitting socket for PowerLED
GX53 und all standard GX53
bulbs.

Versions:
white
chrome
silver grey

Art. No.:
112231
112232
112234

£9.90

Material:
Plastic PC

Recommended bulb:
9W warm white
508860
£14.80



Dimensions:
Ø/H: 9,5/3,2 cm

REAL N-TIC GX53

230~



Socket/Bulb:
GX53/GX53 (excl.)
9W max.
or LED GX53, 1,2W (excl.)
or PowerLED GX53,
3x 1W (excl.)

Note:
Suitable for cavity walls and
ceilings with a material thickness
of max. 1-12 mm.

Versions:
chrome

Art. No.:
112332

£49.90

Material:
Cover: Stainless steel 304
chrome plated
Plastic

Recommended bulb:
9W warm white
508860
£14.80



Dimensions:
Product-Ø/H: 15,2/9 cm
Visible-H: 1 cm

ALAIN Design by CDC/FGL

230~



Socket/Bulb:
GX53/GX53 EnergySaver (excl.)
9W max.
or
GX53/LED GX53 (excl.)
1,2W

Note:
Suitable for cavity walls and
ceilings with a material thickness
of max. 1-12 mm.

Versions:
silver grey ▼

Art. No.:
111402

£39.90

Material:
Aluminium

Recommended bulb:
9W warm white
508860
£14.80



Dimensions:
Cover-Ø/H: 9,3/4 cm

SLIM ENERGYSAVER GX53 Design by CDC

230~



Socket/Bulb:
GX53/GX53 (excl.)
6W max.
or LED GX53, 1,2W

Note:
Suitable for cavity walls and
ceilings with a material thickness
of max. 1-12 mm.

Versions:
alu anodized

Art. No.:
111348

£39.90

Material:
Aluminium

Recommended bulb:
6W warm white
508421
£19.90



Dimensions:
Cover-Ø: 10 cm

DL 181 GX53

230~



Socket/Bulb:
GX53/GX53 (excl.)
11W max.

Note:
Suitable for cavity walls and
ceilings with a material thickness
of max. 1-12 mm.

Versions:
white
silver grey

Art. No.:
112291
112294

£14.80

Material:
Plastic

Recommended bulb:
9W warm white
508860
£14.80



Dimensions:
Product-Ø/H: 13,5/6,5 cm





KOTAK WALL

230~



Socket/Bulb:
E27/EnergySaver (excl.)
till max. Ø/L: 7/17,5 cm

Material:
Aluminium/steel/glass

Dimensions:
W/H/D: 24/20,5/11 cm

Flush mount frame:
Outer-L/W: 30,5/24,5 cm

Note:
Suitable for cavity walls with a
material thickness of 12 mm.

Versions:
Glas satin finish
white ▼
silver grey

Art. No.:
160051
160059

£39.90

Flush mount frame
for Kotak Wall

925251

£9.90

Recommended bulb:
23W warm white
508970
£7.90



KOTAK EVG

230~



Socket/Bulb:
G24q-3/
TC-DE 4-pin EnergySaver (excl.)
2x 26W

Material:
Aluminium/glass

Dimensions:
L/W/D: 20/23/12 cm

Accessory/Included parts:
Electronic ballast (incl.)

Versions:
Glas satin finish
white
silver grey

Art. No.:
160041
160049

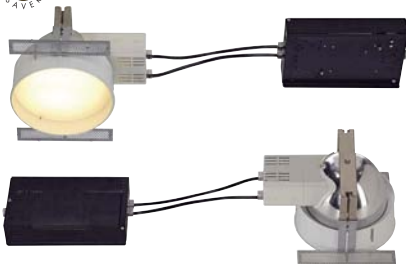
£99.00

Recommended bulb:
26W warm white
508222
£6.90



RCL 102 TC-DE FRAMELESS

230~



Socket/Bulb:
G24q-2/
TC-DE 4-pin EnergySaver (excl.)
2x 18W

Material:
Aluminium/steel/plastic

Dimensions:
Ø/B/H: 18/24/15 cm
Ballast:
L/W/H: 23,5/12,5/5 cm
Connection lead-L: 20 cm

Accessory/Included parts:
Electronic ballast (incl.)
Mounting bracket, suction cup
and screws (incl.)

Note:
Suitable for cavity ceilings with a
material thickness of 10-60 mm.

Versions:
white

Art. No.:
115480

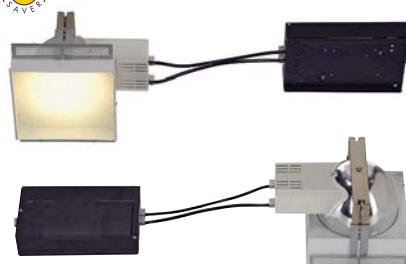
£129.00

Recommended bulb:
18W warm white
508220
£6.90



RCL 103 TC-DE FRAMELESS

230~



Socket/Bulb:
G24q-2/
TC-DE 4-pin EnergySaver (excl.)
2x 18W

Material:
Aluminium/steel/plastic

Dimensions:
L/W/D: 24,5/17,7/15 cm
Ballast:
L/W/H: 23,5/12,5/5 cm
Connection lead-L: 20 cm

Accessory/Included parts:
Electronic ballast (incl.)
Mounting bracket, suction cup
and screws (incl.)

Note:
Suitable for cavity ceilings with a
material thickness of 10-60 mm.

Versions:
white

Art. No.:
115490

£129.00

Recommended bulb:
18W warm white
508220
£6.90







ELT DOWNLIGHT



Socket/Bulb:
E27/EnergySaver (excl.)
till max. Ø/L: 5,2/17,5 cm

Material:
Steel

Dimensions:
Ø/D: 14,5/17 cm

Versions:
white
chrome ▼
silver grey ▼

Art. No.:
152561
152562
152564

£19.90

Recommended bulb:
23W warm white
508970
£7.90



ROW ELT



Socket/Bulb:
E27/EnergySaver (excl.)
till max. Ø/L: 4,5/17 cm

Material:
Aluminium/steel

Dimensions:
Cover-L/W: 18/18 cm

Accessory/Included parts:
Diffuser glass (incl.)

Versions:
silver grey

Art. No.:
112552

£69.50

Recommended bulb:
15W warm white
508960
£6.90



GLASS TUBE E27



Socket/Bulb:
E27/AGL (excl.)
60W max.
or
E27/EnergySaver (excl.)
till max. Ø/L: 5,5/13 cm

Material:
Steel/glass

Dimensions:
Visible Ø/H: 12/13 cm

Versions:
white/chrome

Art. No.:
111592

£24.90

Recommended bulb:
23W warm white
508970
£7.90







PLADO 1x 18W



Socket/Bulb:
G24d-2/TC-D EnergySaver (excl.)
18W

Accessory/Included parts:
Ballast (incl.)
Cross shade (incl.)

Versions:
white

Art. No.:
161501

Material:
Plastic PC

Recommended bulb:
18W warm white
508218
£6.90

Dimensions:
Ø/L/H: 20,5/35/13,5 cm
Ceiling thickness: 0,5-3,5 cm



£59.50

PLADO 2x 18W



Socket/Bulb:
G24d-2/TC-D EnergySaver (excl.)
2x 18W

Accessory/Included parts:
Ballast (incl.)
Cross shade (incl.)

Versions:
white

Art. No.:
161511

Material:
Plastic PC

Recommended bulb:
18W warm white
508218
£6.90

Dimensions:
Ø/L/H: 20,5/35/13,5 cm
Ceiling thickness: 0,5-3,5 cm



£69.50

PLADO 1x 26W



Socket/Bulb:
G24d-3/TC-D EnergySaver (excl.)
26W

Accessory/Included parts:
Ballast (incl.)
Cross shade (incl.)

Versions:
white

Art. No.:
161521

Material:
Plastic PC

Recommended bulb:
26W warm white
508226
£6.90

Dimensions:
Ø/L/H: 20,5/35/13,5 cm
Ceiling thickness: 0,5-3,5 cm



£59.50

PLADO 2x 26W



Socket/Bulb:
G24d-3/TC-D EnergySaver (excl.)
2x 26W

Accessory/Included parts:
Ballast (incl.)
Cross shade (incl.)

Versions:
white

Art. No.:
161531

Material:
Plastic PC

Recommended bulb:
26W warm white
508226
£6.90

Dimensions:
Ø/L/H: 20,5/35/13,5 cm
Ceiling thickness: 0,5-3,5 cm



£69.50

ESSENS flat, 2x 13W



Socket/Bulb:
G24q-1/
TC-DE 4-pin EnergySaver (excl.)
2x 13W

Accessory/Included parts:
Electronic ballast (incl.)

Versions:
white

Art. No.:
161631

Material:
Aluminium/plastic

Note:
Suitable for cavity ceilings with a
material thickness till max. 35 mm.

Recommended bulb:
13W warm white
508212
£6.90

Dimensions:
Ø/H/L: 20/11,5/36 cm



£99.00

ESSENS flat, 1x 18W / 2x 18W



Socket/Bulb:
G24q-2/
TC-DE 4-pin EnergySaver (excl.)
18W/2x 18W

Accessory/Included parts:
Electronic ballast (incl.)

Versions:
white
1x 18W
2x 18W

Art. No.:
161611
161641

Material:
Aluminium/plastic

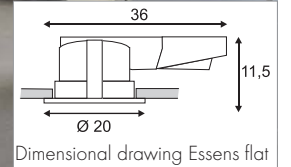
Note:
Suitable for cavity ceilings with a
material thickness till max. 35 mm.

Recommended bulb:
18W warm white
508220
£6.90

Dimensions:
Ø/H/L: 20/11,5/36 cm



£99.00



ESSENS flat, 1x 26W / 2x 26W

230~



Socket/Bulb:
G24q-3/
TC-DE 4-pin EnergySaver (excl.)
26W/2x 26W

Material:
Aluminium/plastic

Dimensions:
Ø/H/L: 20/11,5/36 cm

Accessory/Included parts:
Electronic ballast (incl.)

Note:
Suitable for cavity ceilings with a
material thickness till max. 35 mm.

Versions:
white
1x 26W
2x 26W

Art. No.:
161621
161651

£99.00

Recommended bulb:
26W warm white
508222
£6.90



ESSENS deep, 2x 18W

230~



Socket/Bulb:
G24q-3/
TC-DE 4-pin EnergySaver (excl.)
2x 18W

Material:
Aluminium/plastic

Dimensions:
Ø/H/L: 20/15,5/36 cm

Accessory/Included parts:
Electronic ballast (incl.)
Protective glass (incl.)

Note:
Suitable for cavity ceilings with a
material thickness till max. 35 mm.
Better glare limitation due to a
larger installation depth.

Versions:
white

Art. No.:
161741

£119.00

Recommended bulb:
18W warm white
508220
£6.90



ESSENS deep, 2x 26W

230~



Socket/Bulb:
G24q-3/
TC-DE 4-pin EnergySaver (excl.)
2x 26W

Material:
Aluminium/plastic

Dimensions:
Ø/H/L: 20/15,5/36 cm

Accessory/Included parts:
Electronic ballast (incl.)
Protective glass (incl.)

Note:
Suitable for cavity ceilings with a
material thickness till max. 35 mm.
Better glare limitation due to a
larger installation depth.

Versions:
white

Art. No.:
161751

£119.00

Recommended bulb:
26W warm white
508222
£6.90





RAPIDO 2x 26W ELECTRONIC BALLAST

230~



Socket/Bulb:
G24q-3/TC-DE EnergySaver (incl.)
2x 26W

Material:
Aluminium/plastic

Dimensions:
Cover-Ø: 23 cm,
Housing-L/W/H: 30/19/14 cm

Accessory/Included parts:
Osram electronic ballast (incl.)
Darklight cross shade (incl.)
2x bulbs 3000K, EEK=B (incl.)

Versions:
silver grey

Art. No.:
161326

£129.00

**QUOR 52 ELECTRONIC BALLAST**

230~



Socket/Bulb:
G24q-3/
TC-DE 4-pin EnergySaver (excl.)
2x 26W

Accessory/Included parts:
Electronic ballast (incl.)

Versions:
white
grey

Art. No.:
160021
160029

Material:
Aluminium/glass

Dimensions:
Cover-L/W: 23,5/23,5 cm

Recommended bulb:
26W warm white
508222
£6.90



£99.00

QUOR 52/G ELECTRONIC BALLAST glass satin finish

230~



Socket/Bulb:
G24q-3/
TC-DE 4-pin EnergySaver (excl.)
2x 26W

Accessory/Included parts:
Electronic ballast (incl.)

Versions:
white
Glass satin finish

Art. No.:
160022

Material:
Aluminium/glass

Dimensions:
Glass-L/W: 25/25 cm
Cover-H: 3 cm

Recommended bulb:
26W warm white
508222
£6.90



£99.00

QUOR 52/G ELECTRONIC BALLAST glass partial satin finish

230~



Socket/Bulb:
G24q-3/
TC-DE 4-pin EnergySaver (excl.)
2x 26W

Accessory/Included parts:
Electronic ballast (incl.)

Versions:
white
Glass partial satin finish

Art. No.:
160020

Material:
Aluminium/glass

Dimensions:
Glass-L/W: 25/25 cm
Cover-H: 3 cm

Recommended bulb:
26W warm white
508222
£6.90



£99.00



TC DL 2x 13W ELECTRONIC BALLAST

230~



Socket/Bulb:
G24q-1/
TC-DE 4-pin EnergySaver (excl.)
2x 13W

Material:
Aluminium

Dimensions:
W/L/D: 14,5/23/13 cm

Accessory/Included parts:
Electronic ballast (incl.)

Versions:
white
silver grey

Art. No.:
160011
160019

£99.00

Recommended bulb:
13W warm white
508212
£6.90



TC DL 2x 26W ELECTRONIC BALLAST

230~



Socket/Bulb:
G24q-3/
TC-DE 4-pin EnergySaver (excl.)
2x 26W

Material:
Aluminium

Dimensions:
W/H/D: 27,4/21,2/19 cm

Accessory/Included parts:
Electronic ballast (incl.)

Versions:
white
silver grey

Art. No.:
160031
160039

£119.00

Recommended bulb:
26W warm white
508222
£6.90





T5-BAR, 24W

230~



59/4,5



10



1,06



Socket/Bulb:
G5/T5 EnergySaver (excl.)
24W

Material:
Aluminium/acrylic

Dimensions:
W/H/D: 60,5/5,8/9,8 cm

Accessory/Included parts:
Electronic ballast (incl.)
Diffuser (incl.)

Note:
Only suitable for cavity walls and
ceilings.

Versions:
alu anodized

Recommended bulb:
24W warm white
548024
£9.90 /pce.
(see page 616)

Art. No.:
160124

£99.00

T5-BAR, 54W

230~



119/4,5



10



2,05



Socket/Bulb:
G5/T5 EnergySaver (excl.)
54W

Material:
Aluminium/acrylic

Dimensions:
W/H/D: 120,5/5,8/9,8 cm

Accessory/Included parts:
Electronic ballast (incl.)
Diffuser (incl.)

Note:
Only suitable for cavity walls and
ceilings.

Versions:
alu anodized

Recommended bulb:
54W warm white
548054
£9.90 /pce.
(see page 616)

Art. No.:
160134

£159.00



After loosening the screw, the diffuser plate can be adjusted approx. 2 cm in height.



LOUVRE LAMP BIG PAN Design by CDC

230~



Socket/Bulb:
G13/T8 EnergySaver (excl.)
4x 18W

Material:
Acrylic/steel

Dimensions:
Lamp-L/W/H:
64,5/64/11,5 cm
Acrylic plate-L/W: 63/63 cm
Distance ceiling-plate: 2 cm max.

Accessory/Included parts:
Electronic ballast (incl.)

Note:
For grid ceilings 60 x 60 cm.
With a height adjustable acrylic
diffuser plate.

Louvre lamp adapter:
To mount in 62 x 62 cm
grid ceilings 158110

£89.50

Versions:
white

Art. No.:
158221

£199.00

Recommended bulb:
18W warm white
548202
£5.00 /pce.
(see page 616)



LOUVRE LAMP QRB/TCL

230~

/12~



Socket/Bulb:
G53/QRB111 (excl.)
3x 50W max.
and
2G11/TC-L EnergySaver (excl.)
2x 55W

Material:
Steel

Dimensions:
L/W/H: 60/60/17 cm

Accessory/Included parts:
Electronic ballast (incl.)
Electronic transformer (incl.)

Note:
For grid ceilings 60 x 60 cm.

Louvre lamp adapter:
To mount in 62 x 62 cm
grid ceilings 158110

£89.50

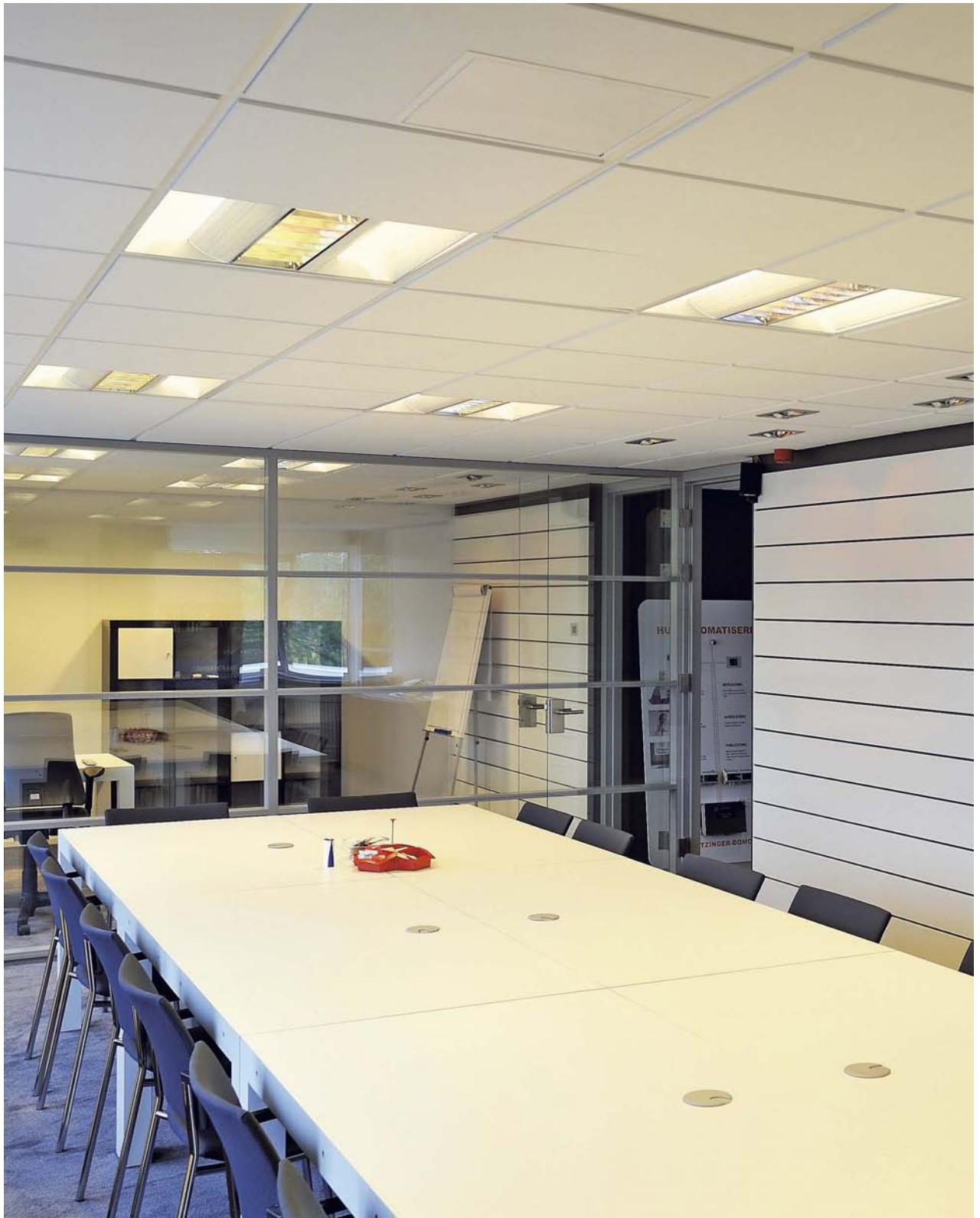
Versions:
silver grey

Art. No.:
158202

£199.00

Recommended bulbs:
55W warm white
508450
£11.80
50W, 45°
543545
£7.90





LOUVRE LAMP LOBANG

230~



Socket/Bulb:
2G11/TC-I EnergySaver (excl.)
2x 55W

Material:
Steel

Dimensions:
L/W/H: 60/60/13 cm

Accessory/Included parts:
Electronic ballast (incl.)

Note:
For grid ceilings 60 x 60 cm.

Louvre lamp adapter:
To mount in 62 x 62 cm
grid ceilings

158110

£89.50

Versions:
white

Recommended bulb:
55W warm white

508450

£11.80



Art. No.:
158211

£149.00





INDI REC 1S GX10



HiEFFICIENT
PROFilight.



Socket/Bulb:
GX10/CMH-MR16 (excl.)
20/35W

Material:
Steel

Dimensions:
L/W/H: 10/10/14 cm

Accessory/Included parts:
Electronic ballast (excl.)

Note:
Suitable for cavity walls and ceilings with a material thickness of 0,5-20 mm. .
Suitable accessories like electronic ballast and HV-cable see page 584.

Versions:
silver grey/black

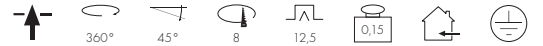
Recommended bulb:
35W warm white
507340
£49.90

Art. No.:
112484

£19.90



NEW TRIA, GX10



HiEFFICIENT
PROFilight.



Socket/Bulb:
GX10/CMH-MR16 (excl.)
20/35W

Material:
Aluminium

Dimensions:
Lamp-H: 10 cm
Cover-Ø: 9 cm (round)
Cover-L/W: 9/9 cm (square)

Accessory/Included parts:
Electronic ballast (excl.)

Note:
Suitable accessories like electronic ballast and HV-cable see page 584.

Versions:
round
alu brushed
matt white rough

square
alu brushed
matt white rough

Recommended bulb:
35W warm white
507340
£49.90

Art. No.:

111450
113520

£29.90

111451
113521

£29.90



HORN GX10



HiEFFICIENT
PROFilight.



Socket/Bulb:
GX10/CMH-MR16 (excl.)
20/35W

Material:
Metal

Dimensions:
Ø/H: 8,5/13 cm

Accessory/Included parts:
Electronic ballast (excl.)

Note:
Suitable accessories like electronic ballast and HV-cable see page 584.

Versions:
white

Recommended bulb:
35W warm white
507340
£49.90

Art. No.:
112951

£24.90



NEW TRIA, G12



HiEFFICIENT
PROFilight.



Socket/Bulb:
G12/HQI-T; CDM-T (excl.)
35/70W

Material:
Aluminium

Dimensions:
Lamp-H: 20 cm
Cover-Ø: 16,5 cm (round)
Cover-L/W:
16,5/16,5 cm (square)
max. ceiling thickness: 2 cm

Accessory/Included parts:
Reflector (incl.)
Ballast (excl.)

Note:
Reflector 38°.
Suitable accessories like electronic ballast and HV-cable see page 584.

Versions:
alu brushed
round
square

Recommended bulb:
70W warm white
507180
£39.90

Art. No.:

111680
111681

£79.90



ROW G12



HiEFFICIENT
PROFilight.



Socket/Bulb:
G12/HQI-T; CDM-T (excl.)
35/70W

Material:
Aluminium/steel

Dimensions:
Cover-L/W: 18/18 cm

Accessory/Included parts:
Ballast (excl.)
Reflector 30° (incl.)

Note:
Suitable accessories like electronic ballast and HV-cable see page 584..

Versions:
Glas satin finish
silver grey

Recommended bulb:
70W warm white
507180
£39.90

Art. No.:
112551

£69.50

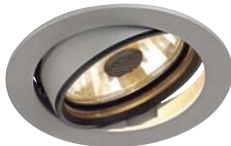




BERET GU6,5



HiEFFICIENT
PROFIlight.



Socket/Bulb:
GU6,5/CMH-TC (excl.)
20/35W

Material:
Aluminium

Dimensions:
Ø/H: 14/13 cm

Accessory/Included parts:
Electronic ballast (excl.)
Reflector (excl.)

Note:
For cavity ceilings with a material thickness till max. 30 mm.
Reflector see below.
Suitable accessories like electronic ballast and HV-cable see page 584.

Versions:
white
silver grey

Art. No.:
162141
162144

£49.90

Recommended bulb:
35W warm white
507030
£49.90



BERET G12



HiEFFICIENT
PROFIlight.



Socket/Bulb:
G12/HQI-T; CDM-T (excl.)
35/70/150W

Material:
Aluminium

Dimensions:
Ø/H: 16,5/15,5 cm

Accessory/Included parts:
Ballast (excl.)
Reflector (excl.)

Note:
For cavity ceilings with a material thickness till max. 40 mm.
Reflector see below.
Suitable accessories like electronic ballast and HV-cable see page 584.

Versions:
white
silver grey

Art. No.:
162151
162154

£59.50

Recommended bulb:
150W warm white
507190
£39.90



ACCESSORY for Beret and Divis Downlights



Reflector for GU6,5 Downlight **Art. No.:**
Aluminium chrome plated
Ø/H: 8,8/4,2 cm (162161) 16° 162161
Ø/H: 8,8/4,2 cm (162166) 70° 162166

£4.80

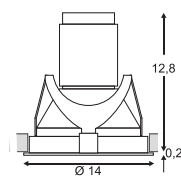


Reflector for G12 Downlight **Art. No.:**
Aluminium chrome plated
Ø/H: 11,3/5,3 cm (162171) 20° 162171
Ø/H: 11,3/5,3 cm (162173) 40° 162173
Ø/H: 11,3/5,3 cm (162176) 70° 162176

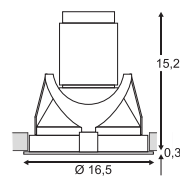
£6.90



Beret GU6,5

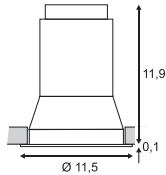


Beret G12



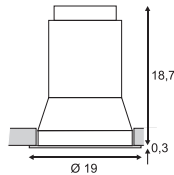


Divis GU6,5 Downlight



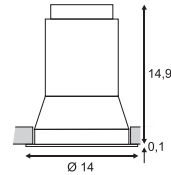
Divis GU6,5 Downlight

Divis G12 Downlight

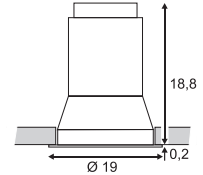


Divis GU6,5 Downlight deep

Divis G12 Downlight deep



Divis G12 Downlight



Divis G12 Downlight deep

DIVIS GU6,5 Downlight

**HiEFFICIENT**
PROFilight.**Socket/Bulb:**
GU6,5/CMH-TC (excl.)
20/35W**Material:**
Aluminium**Dimensions:**
Ø/H: 11,5/12 cm**Accessory/Included parts:**
Electronic ballast (excl.)
Reflector (excl.)**Note:**
For cavity ceilings with a material
thickness till max. 30 mm.
Suitable accessories like
electronic ballast and HV-cable
see page 584**Versions:**
white
silver grey**Art. No.:**
162101
162104**Recommended bulb:**
35W warm white
507030
£49.90

£34.90

DIVIS GU6,5 Downlight deep

**HiEFFICIENT**
PROFilight.**Socket/Bulb:**
GU6,5/CMH-TC (excl.)
20/35W**Material:**
Aluminium**Dimensions:**
Ø/H: 15,5/15,5 cm**Accessory/Included parts:**
Ballast (excl.)
Reflector (excl.)**Note:**
For cavity ceilings with a material
thickness till max. 30 mm.
Suitable accessories like
electronic ballast and HV-cable
see page 584
Deep reflector for glare
limitation.**Versions:**
white
silver grey**Art. No.:**
162121
162124**Recommended bulb:**
35W warm white
507030
£49.90

£49.90

DIVIS G12 Downlight

**HiEFFICIENT**
PROFilight.**Socket/Bulb:**
G12/HQI-T; CDM-T (excl.)
35/70/150W**Material:**
Aluminium**Dimensions:**
Ø/H: 14/15 cm**Accessory/Included parts:**
Electronic ballast (excl.)
Reflector (excl.)**Note:**
For cavity ceilings with a material
thickness till max. 40 mm.
Suitable accessories like
electronic ballast and HV-cable
see page 584.**Versions:**
white
silver grey**Art. No.:**
162111
162114**Recommended bulb:**
150W warm white
507190
£39.90

£39.90

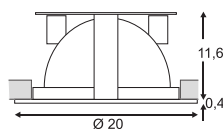
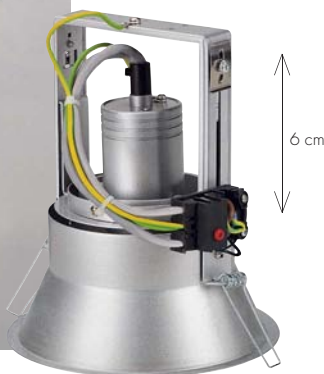
DIVIS G12 Downlight deep

**HiEFFICIENT**
PROFilight.**Socket/Bulb:**
G12/HQI-T; CDM-T (excl.)
35/70/150W**Material:**
Aluminium**Dimensions:**
Ø/H: 19/19 cm**Accessory/Included parts:**
Ballast (excl.)
Reflector (excl.)**Note:**
For cavity ceilings with a material
thickness till max. 40 mm.
Suitable accessories like
electronic ballast and HV-cable
see page 584.
Deep reflector for glare
limitation.**Versions:**
white
silver grey**Art. No.:**
162131
162134**Recommended bulb:**
150W warm white
507190
£39.90

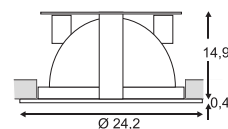
£49.90



Horn Adjust



Essens HQI 70W



Essens HQI 150W

Essens HQI 70W



HORN ADJUST Design by CDC



PROFIEFFICIENT



Socket/Bulb:
G12/CDM-T; HQI-T (excl.)
35/70W

Material:
Steel

Dimensions:
Lamp-Ø/H: 17/20 cm
Visible H: max. 6,5 cm
(extracted condition)

Accessory/Included parts:
Ballast (excl.)

Note:
Numerous fixation positions:
Inboard (ceiling level)
extracted (max. 6 cm) with 30°
swivel range.
Suitable for cavity ceilings with a
material thickness till max. 30 mm
Suitable accessories like
electronic ballast and HV-cable
see page 584.

Versions:
silver grey

Art. No.:
112944

£69.50

Recommended bulb:
70W warm white
507180
£39.90



ESSENS HQI 70W



PROFIEFFICIENT



Socket/Bulb:
RX7s/HQI-TS; CDM-TS (excl.)
70W

Material:
Aluminium/glass

Dimensions:
Ø/H: 20/12 cm (round)

Accessory/Included parts:
Ballast (excl.)

Note:
Suitable for cavity ceilings with a
material thickness till max. 40 mm.
Suitable accessories like
electronic ballast and HV-cable
see page 584.

Versions:
white
silver grey

Art. No.:
162301
162304

£39.90

Recommended bulb:
70W warm white
509070
£24.90



ESSENS HQI 150W



PROFIEFFICIENT



Socket/Bulb:
RX7s/HQI-TS; CDM-TS (excl.)
150W

Material:
Aluminium/glass

Dimensions:
Ø/H: 24,2/15,5 cm

Accessory/Included parts:
Ballast (excl.)

Note:
Suitable for cavity ceilings with a
material thickness till max. 40 mm.
Suitable accessories like
electronic ballast and HV-cable
see page 584.

Versions:
white
silver grey

Art. No.:
162311
162314

£49.90

Recommended bulb:
150W warm white
509150
£24.90



DL 195 G12



PROFIEFFICIENT



Socket/Bulb:
G12/HQI-T; CDM-T (excl.)
70W max.

Material:
Aluminium/steel/glass

Dimensions:
L/W/H: 19,5/19,5/20 cm

Accessory/Included parts:
Ballast (excl.)
Reflector 38° (incl.)

Note:
Suitable for cavity ceilings with a
material thickness till max. 15 mm.
Suitable accessories like
electronic ballast and HV-cable
see page 584.

Versions:
silver grey

Art. No.:
162044

£49.90

Recommended bulb:
70W warm white
507180
£39.90

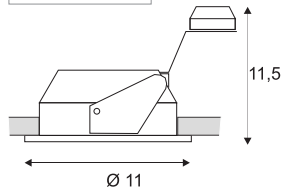




CMH DOWNLIGHTS GU6,5



HIEFFICIENT
PROFIlight.



Socket/Bulb:
GU6,5/CMH-TC (excl.)
20/35W

Material:
Aluminium/steel

Dimensions:
Ø/H: 11/11,5

Accessory/Included parts:
Deco ring (incl.)
Electronic ballast (excl.)
Frame (excl.)
Reflector (excl.)

Note:
Suitable for cavity ceilings with a material thickness till max. 5-20 mm
Suitable accessories like electronic ballast and HV-cable see page 584.

Versions:
white
silver grey

chrome

Art. No.:
112961
112964

£29.90

112962

£34.90

Recommended bulb:
35W warm white
507030
£49.90



CMH DOWNLIGHTS 1 FRAME round



Material:
Aluminium

Dimensions:
Ø/H: 15/5,5 cm

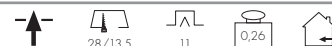
Note:
Suitable for cavity ceilings with a material thickness till max. 25 mm.
Mounting dimensions measured with mounted lamp.

Versions:
white
silver grey

Art. No.:
112971
112970

£14.80

CMH DOWNLIGHTS 2 FRAME round



Material:
Aluminium

Dimensions:
L/W/H: 30/15/5,5 cm

Note:
Suitable for cavity ceilings with a material thickness till max. 25 mm.
Mounting dimensions measured with mounted lamp.

Versions:
white
silver grey

Art. No.:
112981
112980

£19.90

CMH DOWNLIGHTS 1 FRAME square



Material:
Aluminium

Dimensions:
L/W/H: 15/15/5,5 cm

Note:
Suitable for cavity ceilings with a material thickness till max. 25 mm.
Mounting dimensions measured with mounted lamp.

Versions:
white
silver grey

Art. No.:
112975
112974

£14.80

CMH DOWNLIGHTS 2 FRAME square



Material:
Aluminium

Dimensions:
L/W/H: 30/15/5,5 cm

Note:
Suitable for cavity ceilings with a material thickness till max. 25 mm.
Mounting dimensions measured with mounted lamp.

Versions:
white
silver grey

Art. No.:
112985
112984

£19.90







HQI-TS DL 70

**HiEFFICIENT**
PROFilight.**Socket/Bulb:**
Rx7s/HQI-TS; CDM-TS (excl.)
70W**Material:**
Aluminium**Dimensions:**
W/L/D: 14,5/23/13 cm**Accessory/Included parts:**
Ballast (excl.)**Note:**
Suitable accessories like
electronic ballast and HV-cable
see page 584.**Versions:**
white
silver grey**Art. No.:**
150921
150929

£49.90

Recommended bulb:
70W warm white
509070
£24.90

HQI-TS DL 150

**HiEFFICIENT**
PROFilight.**Socket/Bulb:**
Rx7s/HQI-TS; CDM-TS (excl.)
150W**Material:**
Aluminium**Dimensions:**
W/L/D: 14,5/23/13 cm**Accessory/Included parts:**
Ballast (excl.)**Note:**
Suitable accessories like
electronic ballast and HV-cable
see page 584.**Versions:**
white
silver grey**Art. No.:**
150931
150939

£49.90

Recommended bulb:
150W warm white
509150
£24.90

Floor lights



Page 398



Page 400



Page 402



Page 405



Page 406



Page 408



Page 409



Page 410



Page 410



Page 412



Page 445



Page 445



Page 446



Page 446



Page 436



Page 440



Page 439



Page 435



Page 428



Page 430



Page 433



Page 432



Page 421



Page 423



Page 416



Page 419



Page 420



Page 424



Page 443



Page 442



Page 448

Wall luminaires



Page 431



Page 428



Page 439



Page 440



Page 434



Page 434



Page 436



Page 456



Page 456



Page 419



Page 420



Page 417



Page 415



Page 468



Page 468



Page 468



Page 476



Page 454



Page 454



Page 427



Page 427



Page 415



Page 477



Page 476



Page 455



Page 460



Page 461



Page 460



Page 463



Page 463



Page 462



Page 465



Page 414



Page 464



Page 464



Page 471



Page 473



Page 471



Page 470



Page 472



Page 472



Page 472