



Our 3Circuit lamps are also compatible to the 3Circuit systems of other leading manufactures.

<p>Spotlights for low-voltage bulbs MR16</p>	 Page 193	 Page 203	 Page 208	 Page 211			
<p>Spotlights for low-voltage bulbs QRB111</p>	 Page 194	 Page 204	 Page 208	 Page 209			
<p>Spotlights for high-voltage bulbs GU10</p>	 Page 207	 Page 208	 Page 211	 Page 211	 Page 211		
<p>Spotlights for high-voltage bulbs ES111</p>	 Page 194	 Page 209	 Page 210	 Page 210	 Page 210	 Page 211	
<p>Spotlights for high-voltage bulbs R7s</p>	 Page 202	 Page 202	 Page 202	 Page 213			
<p>Spotlights for high-voltage bulbs PAR</p>	 Page 206	 Page 207					
<p>EnergySaver </p>	 Page 194	 Page 212	 Page 212	 Page 212	 Page 213		
<p>Profile luminaires for commercial use  <b>PROFI</b> EFFICIENT light</p>	 Page 190	 Page 193	 Page 196	 Page 196	 Page 199	 Page 199	 Page 199
	 Page 199	 Page 200	 Page 205	 Page 205			
<p>LED-lamps  </p>	 Page 189	 Page 203					



DomeLED for 3Circuit high-voltage track



**Bulb:**  
PowerLED (incl.)  
6x 3W

**Note:**  
3Cir adapter (incl.)  
LED converter (incl.)

**Versions:**  
silver grey  
LED white  
LED warm white

**Art. No.:**  
153501  
153502

**Material:**  
Aluminium/plastic

**Dimensions:**  
W/H/D: 22/18,5/3,8 cm

£199.00





## EURO SPOT G12

230~



350°



100°



15°

60°



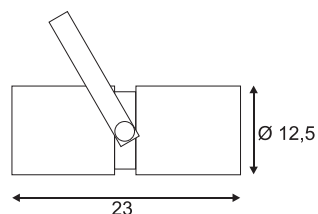
3,15



Socket/Bulb:  
G12/HQI-T; CDM-T (excl.)  
70W

Material:  
Aluminium

Dimensions:  
L/W: 32/16,5 cm  
Head-Ø/L: 12,5/23 cm



Accessory/Included parts:  
3Cir adapter (incl.)  
Conventional ballast (incl.)

Versions:  
silver grey  
Emitting angle 15° 153404  
Emitting angle 60° 153414

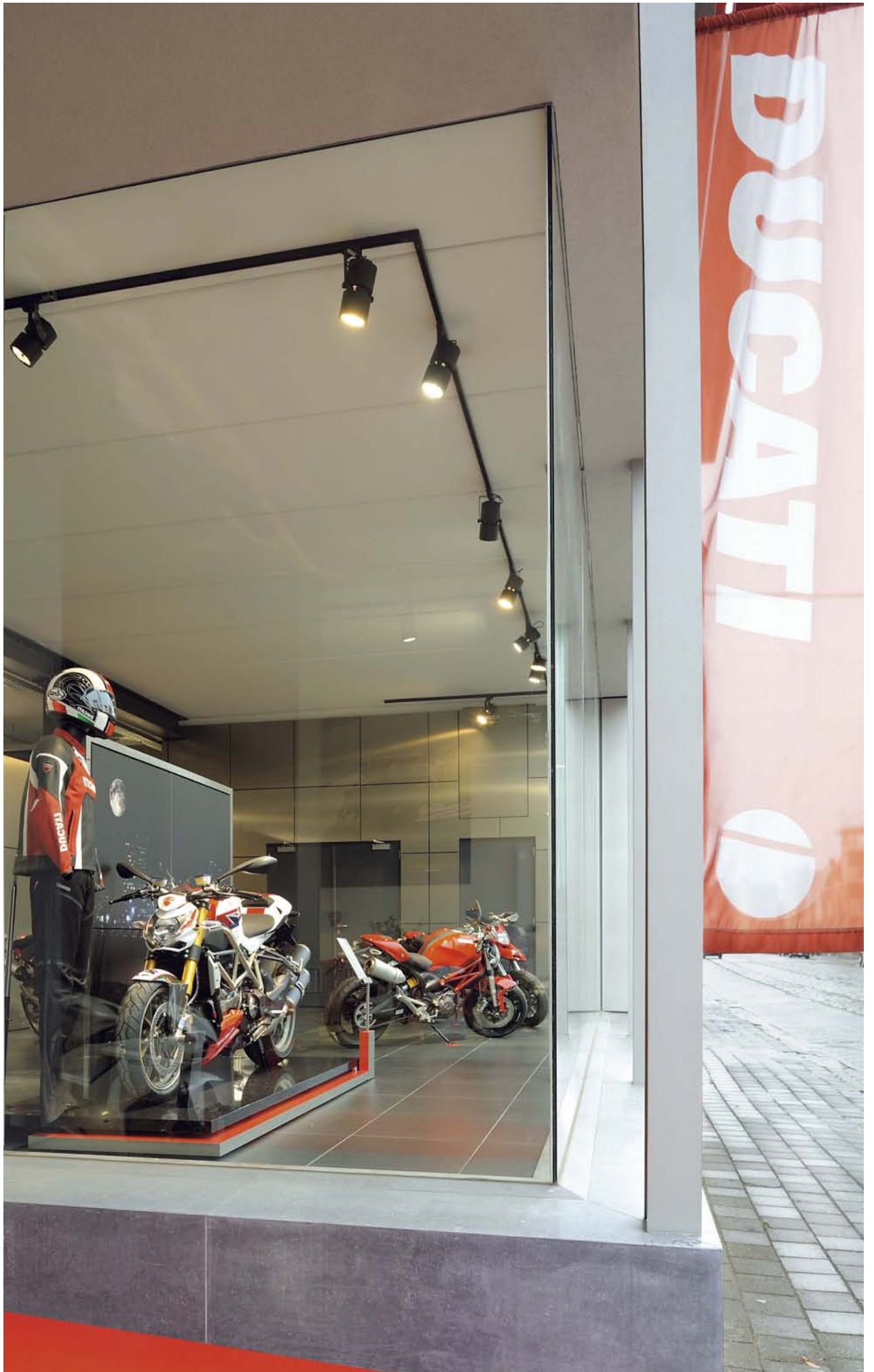
white  
Emitting angle 15° 153401  
Emitting angle 60° 153411

mat-black  
Emitting angle 15° 153400  
Emitting angle 60° 153410

£129.00

Recommended bulb:  
70W white  
507181  
£39.90









## EURO SPOT SDW-TG

HiEFFICIENT  
PROFIlight.**Socket/Bulb:**  
GX12-1/SDW-TG Mini (excl.)  
100W**Material:**  
Aluminium**Dimensions:**  
L/W: 37,5/15,6 cm  
Head-Ø/L: 12,5/30,5 cm**Accessory/Included parts:**  
3Cir adapter (incl.)  
Philips-electronic ballast (incl.)**Note:**  
Spot especially and only to be  
used with Philips bulb SDW-TG  
Mini.**Versions:**  
silver grey  
Emitting angle 38°▼ 153474white  
Emitting angle 38°▼ 153471

£249.90

**Recommended bulb:**  
100W warm white  
508180  
£79.90

## EURO SPOT CMH-TC GU6,5

HiEFFICIENT  
PROFIlight.**Socket/Bulb:**  
GU6,5/CMH-TC (excl.)  
20W**Material:**  
Aluminium**Dimensions:**  
L/W: 26/11,5 cm  
Head-Ø/L: 8/25 cm**Accessory/Included parts:**  
3Cir adapter (incl.)  
Electronic ballast (incl.)**Versions:**  
silver grey  
Emitting angle 12° 153444  
Emitting angle 60° 153454white  
Emitting angle 12° 153441  
Emitting angle 60° 153451

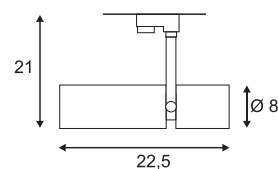
£199.00

**Recommended bulb:**  
20W warm white  
507020  
£49.90

## EURO SPOT MR16

**Socket/Bulb:**  
GU5,3/MR16 (excl.)  
50W max.**Material:**  
Aluminium**Dimensions:**  
H/L: 21/22,5 cm  
Head-Ø/L: 8/22,5 cm**Accessory/Included parts:**  
3Cir adapter (incl.)  
Electronic transformer (incl.)**Versions:**  
silver grey 153484  
white 153481  
black 153480

£79.90

**Recommended bulb:**  
50W XENON warm white  
539540  
£3.45



Euro Spot ES111, white and  
Euro Spot QRB111, silver grey  
with Power LED QRB bulb,  
warm white (550132)

### EURO SPOT QRB111



**Socket/Bulb:**  
G53/QRB111 (excl.)  
75W max.

**Material:**  
Aluminium

**Dimensions:**  
L/W: 28/16,5 cm  
Head-Ø/L: 12,5/20 cm

**Accessory/Included parts:**  
3Cir adapter (incl.)  
Toroidal transformer (incl.)

**Versions:**  
white  
silver grey  
matt-black

**Art. No.:**  
153431  
153434  
153430

£99.00

**Recommended bulb:**  
75W 45°  
543745  
£7.90



### EURO SPOT ES111



**Socket/Bulb:**  
GU10/ES111 (excl.)  
75W max.

**Material:**  
Aluminium

**Dimensions:**  
L/W: 24/16,5 cm  
Head-Ø/L: 12,5/14,5 cm

**Accessory/Included parts:**  
3Cir adapter (incl.)

**Versions:**  
white  
silver grey

**Art. No.:**  
153421  
153424

£49.90

**Recommended bulb:**  
75W warm white  
575672  
£12.90



### EURO SPOT E27



**Socket/Bulb:**  
E27/EnergySaver (excl.)  
till max. Ø/L: 6/17,5 cm

**Material:**  
Aluminium

**Dimensions:**  
L/W: 32/16,5 cm  
Head-Ø/L: 12,5/23 cm

**Accessory/Included parts:**  
3Cir adapter (incl.)

**Versions:**  
white  
silver grey

**Art. No.:**  
153461  
153464

£69.50

**Recommended bulb:**  
23W warm white  
508970  
£7.90








**SDL 70** Design by CDC


THE PROFESSIONAL  
**FN**  
LIGHT

**HiEFFICIENT**  
**PROFIlight.**

**Socket/Bulb:**  
Rx7s/HQI-TS; CDM-TS (excl.)  
70W

**Material:**  
Aluminium

**Dimensions:**  
L/W/H: 39/25/10 cm

**Accessory/Included parts:**  
3Cir adapter (incl.)  
Conventional ballast (incl.)

**Versions:**  
white  
silver grey

**Art. No.:**  
150551  
150552

£149.00

**Recommended bulb:**  
70W white  
509071  
£24.90


**SDL 150** Design by CDC


THE PROFESSIONAL  
**FN**  
LIGHT

**HiEFFICIENT**  
**PROFIlight.**

**Socket/Bulb:**  
Rx7s/HQI-TS; CDM-TS (excl.)  
150W

**Material:**  
Aluminium

**Dimensions:**  
L/W/H: 39/25/10 cm

**Accessory/Included parts:**  
3Cir adapter (incl.)  
Conventional ballast (incl.)

**Versions:**  
white  
silver grey

**Art. No.:**  
150561  
150562

£165.00

**Recommended bulb:**  
150W white  
509151  
£24.90


**ACCESSORY for SDL 70/150** Design by CDC

**Shutters**

Aluminium white 150571  
L/W/H: 38/27,5/3,5 cm silver grey 150572

**Art. No.:**

150571

150572

£14.80

**SDL PRO 70** Design by CDC


**HiEFFICIENT**  
**PROFIlight.**

**Socket/Bulb:**  
Rx7s/HQI-TS; CDM-TS (excl.)  
70W

**Material:**  
Aluminium

**Dimensions:**  
L/W/H: 30/27/8 cm  
Bracket-H: 16 cm

**Accessory/Included parts:**  
3Cir adapter (incl.)  
Electronic ballast (incl.)

**Versions:**  
white  
silver grey

**Art. No.:**  
153621  
153624

£149.00

**Recommended bulb:**  
70W white  
509071  
£24.90


**SDL PRO 150** Design by CDC


**HiEFFICIENT**  
**PROFIlight.**

**Socket/Bulb:**  
Rx7s/HQI-TS; CDM-TS (excl.)  
150W

**Material:**  
Aluminium

**Dimensions:**  
L/W/H: 30/27/8 cm  
Bracket-H: 16 cm

**Accessory/Included parts:**  
3Cir adapter (incl.)  
Electronic ballast (incl.)

**Versions:**  
white  
silver grey

**Art. No.:**  
153631  
153634

£179.00

**Recommended bulb:**  
150W white  
509151  
£24.90







HQI-TS Flood 70 (150321) incl. 3Ph-adapter



HQI-TS Flood 70 (150302)  
without 3Cir adapter, with plug, open cable end.



HQI-TS Flood 70 (150312) incl. ceiling canopy



## HQI-TS FLOOD 70

230~

HiEFFICIENT  
PROFIlight.

**Socket/Bulb:**  
Rx7s/HQI-TS; CDM-TS (excl.)  
70W

**Material:**  
Steel

**Dimensions:**  
L/W/H: 20/20/10 cm

**Accessory/Included parts:**  
Conventional ballast (incl.)

**Versions:**  
3Cir adapter (incl.)  
white  
silver grey

**Art. No.:**  
150321  
150322  
  
**£159.00**

**Versions:**  
Bracket, open cable end  
white  
silver grey

**Art. No.:**  
150301  
150302

**Ceiling canopy (incl.)**  
white  
silver grey

**Art. No.:**  
150311  
150312

**£149.00**

**Recommended bulb:**  
70W white  
509071  
**£24.90**



## HQI-TS FLOOD 150

230~

HiEFFICIENT  
PROFIlight.

**Socket/Bulb:**  
Rx7s/HQI-TS; CDM-TS (excl.)  
150W

**Material:**  
Steel

**Dimensions:**  
L/W/H: 24/24/10 cm

**Accessory/Included parts:**  
Conventional ballast (incl.)

**Versions:**  
3Cir adapter (incl.)  
white  
silver grey

**Art. No.:**  
150621  
150622  
  
**£179.00**

**Versions:**  
Bracket, open cable end  
white  
silver grey

**Art. No.:**  
150601  
150602

**Ceiling canopy (incl.)**  
white  
silver grey

**Art. No.:**  
150611  
150612

**£169.00**

**Recommended bulb:**  
150W white  
509151  
**£24.90**



## Q-TECH® G12 HOR

230~

HiEFFICIENT  
PROFIlight.

**Socket/Bulb:**  
G12/HQI-T; CDM-T (excl.)  
70W

**Material:**  
Aluminium

**Dimensions:**  
Head-Ø: 12 cm  
W/H: 30,5/16 cm

**Accessory/Included parts:**  
3Cir adapter (incl.)  
Electronic ballast (incl.)  
Reflector (excl.)

**Note:**  
Reflector see below.

**Versions:**  
silver grey/black  
white  
silver grey

**Art. No.:**  
153200  
153201  
153204

**£199.00**

**Recommended bulb:**  
70W white  
507181  
**£39.90**



## NAVIGATOR® G8,5

230~

HiEFFICIENT  
PROFIlight.

**Socket/Bulb:**  
G8,5/CDM-TC (excl.)  
70W

**Material:**  
Aluminium

**Dimensions:**  
L/W/H: 37,5/14/21,5 cm

**Accessory/Included parts:**  
3Cir adapter (incl.)  
Electronic ballast (incl.)  
Reflector (excl.)

**Versions:**  
silver grey

**Art. No.:**  
153164

**£199.00**

**Recommended bulb:**  
70W white  
507047  
**£49.90**



## ACCESSORY for Q-Tech® G12 and Navigator® G8,5



**Reflector for Q-Tech® G12**  
Aluminium  
Product-Ø: 10,5 cm

**Art. No.:**  
24° 153241  
44° 153244  
60° 153246

**£9.90**



**Reflector for Navigator® G8,5**  
Aluminium  
Product-Ø: 10,5 cm

**Art. No.:**  
12° 153171  
24° 153172  
44° 153174  
60° 153176

**£19.90**


**CMH SPOT 20W, GU6,5** Design by CDC

230~



**Socket/Bulb:**  
GU6,5/CMH-TC (excl.)  
20W

**Material:**  
Aluminium

**Dimensions:**  
L/W/H: 24/9,5/19 cm

**HiEFFICIENT  
PROFIlight.**

**Accessory/Included parts:**  
3Cir adapter (incl.)  
Electronic ballast (incl.)  
Deco ring (incl.)  
Reflectors (excl.)

**Versions:**  
black/chrome  
white  
silver grey

**Art. No.:**  
153700  
153701  
153704

£129.00

**Note:**  
Reflectors with numerous emitting  
angles see below.

chrome

153702

£49.00

**Recommended bulb:**  
20W warm white  
507020  
£49.90


**CMH SPOT 35W, GU6,5** Design by CDC

230~



**Socket/Bulb:**  
GU6,5/CMH-TC (excl.)  
35W

**Material:**  
Aluminium

**Dimensions:**  
L/W/H: 24/9,5/19 cm

**HiEFFICIENT  
PROFIlight.**

**Accessory/Included parts:**  
3Cir adapter (incl.)  
Electronic ballast (incl.)  
Deco ring (incl.)  
Reflectors (excl.)

**Versions:**  
black/chrome  
white  
silver grey

**Art. No.:**  
153710  
153711  
153714

£129.00

**Note:**  
Reflectors with numerous emitting  
angles see below.

chrome

153712

£149.00

**Recommended bulb:**  
35W warm white  
507030  
£49.90


**CMH-SPOT 70W, G12** Design by CDC

230~



**Socket/Bulb:**  
G12/HQ-T, CDM-T (excl.)  
70W

**Material:**  
Aluminium

**Dimensions:**  
L/W/H: 26/9,5/22 cm

**HiEFFICIENT  
PROFIlight.**

**Accessory/Included parts:**  
3Cir adapter (incl.)  
Electronic ballast (incl.)  
Deco ring (incl.)  
Reflectors (excl.)

**Versions:**  
black/chrome  
white  
silver grey

**Art. No.:**  
153730  
153731  
153734

£179.00

**Note:**  
Reflectors with numerous emitting  
angles see below.

**Recommended bulb:**  
70W warm white  
507180  
£39.90


**QT-SPOT, GY6,35** Design by CDC

230~

12~



**Socket/Bulb:**  
GY6,35/QT-pin socket (excl.)  
20-100W

**Material:**  
Aluminium

**Dimensions:**  
L/W/H: 24/9,5/19 cm

**HiEFFICIENT  
PROFIlight.**

**Accessory/Included parts:**  
3Cir adapter (incl.)  
Electronic transformer (incl.)  
Deco ring (incl.)  
Reflectors (excl.)

**Versions:**  
black/chrome  
white  
silver grey

**Art. No.:**  
153750  
153751  
153754

£79.90

**Note:**  
Suitable reflectors see below.

**Recommended bulb:**  
50W  
512250  
£0.90


**ACCESSORY for Spots**


**Reflector for CMH GU6,5  
and QT-Spots**  
Aluminium, chrome  
Ø/H: 9,5/8 cm

**Art. No.:**  
12° 153721  
24° 153722  
38° 153723  
60° 153726

£19.90



**Reflector for CMH-Spot G12  
70W**  
Aluminium  
Ø/H: 11/9 cm

**Art. No.:**  
12° 153741  
24° 153742  
38° 153743  
60° 153746

£19.90





## SKELETTO



**Socket/Bulb:**  
R7s/R7s, 78 mm (excl.)  
150W max.

**Material:**  
Steel

**Dimensions:**  
L/W/H: 17/15,5/5 cm

**Accessory/Included parts:**  
3Cir adapter (incl.)

**Complementary products:**  
Page 287



**Versions:**  
silver grey

**Art. No.:**  
152404

£59.50

**Recommended bulb:**  
100W EnergySaver  
519215  
£2.98



## NEPRO R7s



**Socket/Bulb:**  
R7s/R7s, 118 mm (excl.)  
300W max.

**Material:**  
Aluminium

**Dimensions:**  
L/W/H: 17,5/11/19,5 cm

**Accessory/Included parts:**  
3Cir adapter (incl.)

**Complementary products:**  
Page 066, 156, 163, 243, 285



**Versions:**  
silver grey

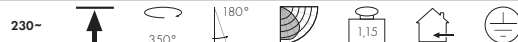
**Art. No.:**  
152222

£79.90

**Recommended bulb:**  
200W EnergySaver  
519223  
£2.98



## R7s SHOP



**Socket/Bulb:**  
R7s/R7s, 118 mm (excl.)  
300W max.

**Material:**  
Aluminium/steel

**Dimensions:**  
L/W/H: 18,5/27,5/14 cm

**Accessory/Included parts:**  
3Cir adapter (incl.)  
Shutters (excl.)

**Versions:**  
white  
silver grey

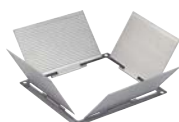
**Art. No.:**  
152301  
152304

£59.50

**Recommended bulb:**  
200W EnergySaver  
519223  
£2.98



## ACCESSORY for R7s Shop



**Shutters**  
L/W/H: 28,5/26/2 cm

white  
silver grey

**Art. No.:**  
152311  
152314

Dimensions pertain to folded out  
shutter.

£11.90





## 3PH 102 LED

230~  
10A  
350LED  
1 pce.

350°

90°

120°



0,6

LED  
LEDTEC**Bulb:**  
Planar LED (incl.)  
10W**Material:**  
Aluminium**Dimensions:**  
W/H/D: 11,5/13/9 cm**Accessory/Included parts:**  
LED converter (incl.)**Versions:**  
silver grey  
LED white  
LED warm white**Art. No.:**  
153601  
153602

£99.00

## TEC I MR16

230~  
12~

0,45

**Socket/Bulb:**  
G5,3/MR16 (excl.)  
50W max.**Material:**  
Aluminium**Dimensions:**  
L/W/H: 14/11,5/19,5 cm**Accessory/Included parts:**  
3Cir adapter (incl.)  
Electronic transformer (incl.)**Versions:**  
silver grey**Art. No.:**  
153032

£59.50

**Recommended bulb:**  
50W, 40°  
535540  
£1.90

## TEC II MR16

230~  
12~

0,65

**Socket/Bulb:**  
G5,3/MR16 (excl.)  
2x 50W max.**Material:**  
Aluminium**Dimensions:**  
L/W/H: 14/19/19,5 cm**Accessory/Included parts:**  
3Cir adapter (incl.)  
Electronic transformer (incl.)**Versions:**  
silver grey**Art. No.:**  
153042

£99.00

**Recommended bulb:**  
50W, 40°  
535540  
£1.90





## TEC I QRB

230~  
12~

**Socket/Bulb:**  
G53/QRB111 (excl.)  
50W max.

**Material:**  
Aluminium

**Dimensions:**  
L/W/H: 14/18/19,5 cm

**Accessory/Included parts:**  
3Cir adapter (incl.)  
Electronic transformer (incl.)

**Versions:**  
silver grey

**Art. No.:**  
153002

£69.50

**Recommended bulb:**  
50W, 45°  
543545  
£7.90



## TEC II QRB

230~  
12~

**Socket/Bulb:**  
G53/QRB111 (excl.)  
2x 50W max.

**Material:**  
Aluminium

**Dimensions:**  
L/W/H: 14/31,5/19,5 cm

**Accessory/Included parts:**  
3Cir adapter (incl.)  
Electronic transformer (incl.)

**Versions:**  
silver grey

**Art. No.:**  
153012

£119.00

**Recommended bulb:**  
50W, 45°  
543545  
£7.90



## TEC IV QRB

230~  
12~

**Socket/Bulb:**  
G53/QRB111 (excl.)  
4x 50W max.

**Material:**  
Aluminium

**Dimensions:**  
L/W/H: 30,5/31,5/19,5 cm

**Accessory/Included parts:**  
3Cir adapter (incl.)  
Electronic transformer (incl.)

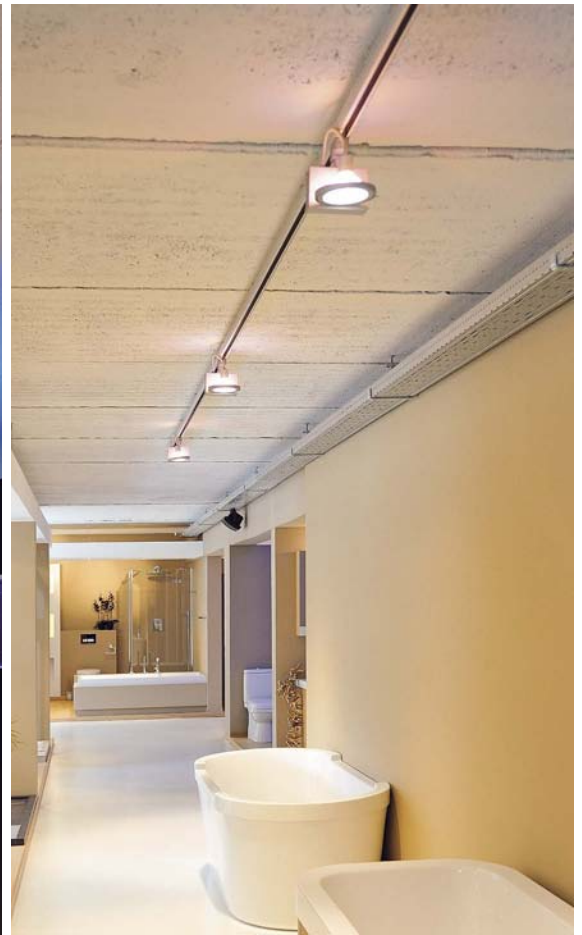
**Versions:**  
silver grey

**Art. No.:**  
153022

£179.00

**Recommended bulb:**  
50W, 45°  
543545  
£7.90





## TEC | BRITESPOT ES111 GX10

230~

**HiEFFICIENT**  
PROFIlighT.**Socket/Bulb:**  
GX10/Britespot ES111 (excl.)  
70W**Material:**  
Aluminium**Dimensions:**  
L/W/H: 14/18/19,5 cm**Accessory/Included parts:**  
3Cir adapter (incl.)  
Electronic ballast (incl.)**Versions:**  
silver grey**Art. No.:**  
153182

£199.00

**Recommended bulb:**  
70W warm white  
506982  
£69.50

## TEC | GX10

230~

**HiEFFICIENT**  
PROFIlighT.**Socket/Bulb:**  
GX10/CMH-MR16 (excl.)  
35W**Material:**  
Aluminium**Dimensions:**  
W/H/D: 9,5/24/12,5 cm**Accessory/Included parts:**  
3Cir adapter (incl.)  
Electronic ballast (incl.)**Versions:**  
silver grey**Art. No.:**  
153094

£179.00

**Recommended bulb:**  
35W white  
507341  
£49.90The power pack in compact format for the  
Tec | GX10 lamp.

CMH MR16 Precise™ Constant Color™, GX10, 35W		3000K			
35W	12°	507310	35W	12°	507311
35W	25°	507320	35W	25°	507321
35W	40°	507340	35W	40°	507341

£49.90

CMH MR16 Precise™ Constant Color™, GX10, 35W		4200K			
35W	12°	507310	35W	12°	507311
35W	25°	507320	35W	25°	507321
35W	40°	507340	35W	40°	507341

£49.90


**AERO PAR30** Design by CDC

230~



**Socket/Bulb:**  
E27/PAR30 (excl.)  
75W max.

**Material:**  
Aluminium/plastic

**Dimensions:**  
L/W/H: 12/12/15 cm

**Accessory/Included parts:**  
3Cir adapter (incl.)

**Versions:**  
silver grey

**Art. No.:**  
152417

£69.50

**Recommended bulb:**  
75W, 24°  
519737  
£9.90




**PAR MESH 16**

230-



**Socket/Bulb:**  
GU10/GU10 (excl.)  
50W max.

**Material:**  
Aluminium

**Dimensions:**  
Ø/L: 9/24 cm

**Accessory/Included parts:**  
3Cir adapter (incl.)

**Versions:**  
alu natural

**Art. No.:**  
152154

£49.90

**Recommended bulb:**  
50W warm white  
575510  
£4.80


**PAR MESH 20**

230-



**Socket/Bulb:**  
E27/PAR20 (excl.)  
75W max.

**Material:**  
Aluminium

**Dimensions:**  
Ø/L: 16/27 cm

**Accessory/Included parts:**  
3Cir adapter (incl.)

**Versions:**  
alu natural

**Art. No.:**  
152164

£59.50

**Recommended bulb:**  
75W, 24°  
519727  
£7.90


**PAR MESH 30**

230-



**Socket/Bulb:**  
E27/PAR30 (excl.)  
150W max.

**Material:**  
Aluminium

**Dimensions:**  
Ø/L: 18/39 cm

**Accessory/Included parts:**  
3Cir adapter (incl.)

**Versions:**  
alu natural

**Art. No.:**  
152174

£69.50

**Recommended bulb:**  
150W, 24°  
519739  
£9.90




**KARDATRACK MR16/2** Design by CDC


**Socket/Bulb:**  
GU5,3/MR16 (excl.)  
2x 50W max.

**Material:**  
Aluminium

**Dimensions:**  
L/W/H: 35/13/15 cm

**Accessory/Included parts:**  
3Cir adapter (incl.)  
Electronic transformer (incl.)

**Versions:**  
silver grey

**Art. No.:**  
154502

£119.00

**Recommended bulb:**  
50W, 25°  
535527  
£1.90


**KARDATRACK GU10/4** Design by CDC


**Socket/Bulb:**  
GU10/GU10 (excl.)  
4x 50W max.

**Material:**  
Aluminium

**Dimensions:**  
L/W/H: 52,5/13/18 cm

**Accessory/Included parts:**  
3Cir adapter (incl.)

**Versions:**  
silver grey

**Art. No.:**  
154532

£19.00

**Recommended bulb:**  
50W warm white  
575510  
£4.80


**KARDATRACK QRB111/4** Design by CDC


**Socket/Bulb:**  
G53/QRB111 (excl.)  
4x 50W max.

**Material:**  
Aluminium

**Dimensions:**  
L/W/H: 86,5/19/18 cm

**Accessory/Included parts:**  
3Cir adapter (incl.)  
Electronic transformer (incl.)

**Versions:**  
silver grey

**Art. No.:**  
154512

£229.00

**Recommended bulb:**  
50W warm white  
543524  
£7.90





## ACRYLICBOX I QRB111 for 3Circuit high-voltage track

230~  
12~

**Socket/Bulb:**  
G53/QRB111 (excl.)  
75W max.

**Material:**  
PMMA

**Dimensions:**  
L/W/H: 15/15/20,3 cm

**Accessory/Included parts:**  
3Cir adapter (incl.)  
Electronic transformer (incl.)

**Versions:**  
black/translucent

**Art. No.:**

153801

£119.00

**Recommended bulb:**  
75W, 24°  
543724  
£7.90



## ACRYLICBOX II QRB111 for 3Circuit high-voltage track

230~  
12~

**Socket/Bulb:**  
G53/QRB111 (excl.)  
2x 50W max.

**Material:**  
PMMA

**Dimensions:**  
L/W/H: 29,4/15/20,3 cm

**Accessory/Included parts:**  
3Cir adapter (incl.)  
Electronic transformer (incl.)

**Versions:**  
black/translucent

**Art. No.:**

153802

£179.00

**Recommended bulb:**  
50W, 24°  
543524  
£7.90



## ACRYLICBOX I ES111 for 3Circuit high-voltage track

230~



**Socket/Bulb:**  
GU10/ES111 (excl.)  
75W max.

**Material:**  
PMMA

**Dimensions:**  
L/W/H: 15/15/21,4 cm

**Accessory/Included parts:**  
3Cir adapter (incl.)

**Versions:**  
black/translucent

**Art. No.:**

153811

£99.00

**Recommended bulb:**  
75W warm white  
575672  
£12.90



## ACRYLICBOX II ES111 for 3Circuit high-voltage track

230~



**Socket/Bulb:**  
GU10/ES111 (excl.)  
2x 75W max.

**Material:**  
PMMA

**Dimensions:**  
L/W/H: 29,5/15/21,4 cm

**Accessory/Included parts:**  
3Cir adapter (incl.)

**Versions:**  
black/translucent

**Art. No.:**

153812

£159.00

**Recommended bulb:**  
75W warm white  
575672  
£12.90




**LIGHT EYE PENDULUM LAMP for 3Circuit high-voltage track**

230~ 1,5m 0,7


**Socket/Bulb:**  
GU10/ES111 (excl.)  
75W max.

**Material:**  
Steel

**Dimensions:**  
Ø/H: 15/12 cm

**Accessory/Included parts:**  
3Cir adapter (incl.)

**Note:**  
textile black cable

**Complementary products:**  
Page 042, 145

**Versions:**  
chrome

**Recommended bulb:**  
75W warm white  
575672  
£12.90

**Art. No.:**  
153112

£99.00

**LIGHT EYE SPOT for 3Circuit high-voltage track**

230~ 350° 90° 0,55


**Socket/Bulb:**  
GU10/ES111 (excl.)  
75W max.

**Material:**  
Steel

**Dimensions:**  
Ø/H: 15/28 cm

**Accessory/Included parts:**  
3Cir adapter (incl.)

**Complementary products:**  
Page 042, 145

**Versions:**  
chrome

**Recommended bulb:**  
75W warm white  
575672  
£12.90

**Art. No.:**  
153102

£99.00

**LUNA I**

230~ 350° 320° 0,4


**Socket/Bulb:**  
GU10/ES111 (excl.)  
75W max.

**Material:**  
Aluminium

**Dimensions:**  
W/H: 13/25,5 cm

**Accessory/Included parts:**  
3Cir adapter (incl.)  
Deco ring (excl.)

**Versions:**  
silver grey

**Recommended bulb:**  
75W warm white  
575672  
£12.90

**Art. No.:**  
152282

£59.50

**ACCESSORY for Luna I**

**Deco ring 111 for ES111**  
silver grey, grooved

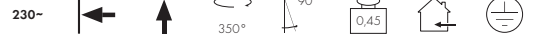
**Art. No.:**  
151051  
£6.90

silver grey, smooth ▼

 111574  
£9.90




## YOKI ES111 Design by CDC/FGL



**Socket/Bulb:**  
GU10/ES111 (excl.)  
75W max.

**Material:**  
Aluminium

**Dimensions:**  
L/W/H: 8,5/5/25,5 cm

**Accessory/Included parts:**  
3Cir adapter (incl.)  
Deco ring (incl.)

**Note:**  
With the deco ring the lamp can also be used in combination with the DomeLED ES111 bulb.

**Versions:**  
silver grey

**Recommended bulb:**  
75W warm white  
575672  
£12.90

**Art. No.:**  
153154

£69.50



## SLEEK SPOT MR16



**Socket/Bulb:**  
GU5,3/MR16 (excl.)  
50W max.

**Material:**  
Aluminium

**Dimensions:**  
L/W/H: 11/12,5/8,5 cm

**Accessory/Included parts:**  
3Cir adapter (incl.)  
Electronic transformer (incl.)  
Deco ring (incl.)

**Versions:**  
white ▼  
silver grey ▼

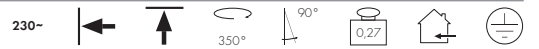
**Recommended bulb:**  
50W, 40°  
535540  
£1.90

**Art. No.:**  
153351  
153354

£79.90



## Q-TECH® SPOT GU10



**Socket/Bulb:**  
GU10/GU10 (excl.)  
50W max.

**Material:**  
Aluminium

**Dimensions:**  
Head-Ø: 6 cm  
Total-L: 23,5 cm

**Accessory/Included parts:**  
3Cir adapter (incl.)

**Versions:**  
white  
silver grey

**Recommended bulb:**  
50W warm white  
575510  
£4.80

**Art. No.:**  
153301  
153304

£69.50



## BIMA I



**Socket/Bulb:**  
GU10/GU10 (excl.)  
50W max.

**Material:**  
Aluminium

**Dimensions:**  
L/W/H: 7,8/8,5/25,5 cm

**Accessory/Included parts:**  
3Cir adapter (incl.)

**Versions:**  
silver grey

**Recommended bulb:**  
50W warm white  
575510  
£4.80

**Art. No.:**  
152242

£49.90



## BIMA II



**Socket/Bulb:**  
GU10/GU10 (excl.)  
2x 50W max.

**Material:**  
Aluminium

**Dimensions:**  
L/W/H: 7,8/13/25,5 cm

**Accessory/Included parts:**  
3Cir adapter (incl.)

**Versions:**  
silver grey

**Recommended bulb:**  
50W warm white  
575510  
£4.80

**Art. No.:**  
152232

£69.50



## AERO GU10 Design by CDC



**Socket/Bulb:**  
GU10/GU10 (excl.)  
50W max.

**Material:**  
Aluminium/plastic

**Dimensions:**  
L/W/H: 9/9/14,5 cm

**Accessory/Included parts:**  
3Cir adapter (incl.)

**Versions:**  
white  
silver grey

**Recommended bulb:**  
50W warm white  
575510  
£4.80

**Art. No.:**  
151011  
151017

£59.50







### TWINTUBE for 3Circuit high-voltage track

230~



**Socket/Bulb:**  
G5/T5 EnergySaver (excl.)  
2x 39W

**Material:**  
Housing plastic  
Tube acrylic

**Dimensions:**  
L/W/H: 91/19,5/11,5 cm  
Tube-Ø: 4,3 cm

**Accessory/Included parts:**  
3Cir adapter (incl.)  
Electronic ballast (incl.)

**Versions:**  
silver grey

**Art. No.:**  
152182

£179.00

**Recommended bulb:**  
39W warm white  
548039  
£9.90 /pce.  
(see page 616)



### PL 2/24 SHOP

230~



**Socket/Bulb:**  
2G11/TC-L 2G11 (excl.)  
2x 24W

**Material:**  
Aluminium/plastic

**Dimensions:**  
L/W/H: 42,7/14/27,5 cm

**Accessory/Included parts:**  
3Cir adapter (incl.)  
Ballast (incl.)

**Versions:**  
silver grey/black

**Art. No.:**  
152272

£129.00

**Recommended bulb:**  
24W white  
508441  
£9.90



### TEC TC-DE

230~



**Socket/Bulb:**  
G24q-3/  
TC-DE EnergySaver (excl.)  
26W

**Material:**  
Aluminium/glass

**Dimensions:**  
L/W/H: 35/14,5/22 cm

**Accessory/Included parts:**  
3Cir adapter (incl.)  
Electronic ballast (incl.)

**Versions:**  
silver grey

**Art. No.:**  
153062

£129.00

**Recommended bulb:**  
26W white  
508322  
£6.90





## NEPRO 2 T5

230~



**Socket/Bulb:**  
G5/EnergySaver (excl.)  
2x 24W

**Material:**  
Aluminium

**Dimensions:**  
L/W/H: 60,5/12/19 cm

**Accessory/Included parts:**  
Electronic ballast (incl.)

**Versions:**  
silver grey

**Art. No.:**  
153524

£49.00

**Recommended bulb:**  
24W white  
548124  
£9.90 /pce.  
(see page 616)



## NEPRO 2 PL

230~



**Socket/Bulb:**  
2G11/TC-L (excl.)  
36W

**Material:**  
Aluminium

**Dimensions:**  
L/W/H: 48/11,5/18,5 cm

**Accessory/Included parts:**  
Electronic ballast (incl.)

**Versions:**  
silver grey

**Art. No.:**  
153544

£149.00

**Recommended bulb:**  
36W white  
590145  
£9.90



## NEPRO 2 R7s

230~



**Socket/Bulb:**  
R7s/R7s, 118 mm (excl.)  
150W max.

**Material:**  
Aluminium

**Dimensions:**  
L/W/H: 17/11,5/18,5 cm

**Versions:**  
silver grey

**Art. No.:**  
153534

£59.50

**Recommended bulb:**  
130W EnergySaver  
519222  
£2.98





# EUTRAC®

**Eutrac®-System** The 5 conductor Eutrac® surface track consists of an extruded aluminium profile which also functions as earth and two inserted plastic profiles carrying four embedded 2.5 mm<sup>2</sup> copper conductors. Any given profile can be easily cut to length on site. It is not necessary to cut back or bend back the conductors. The track has pre-punched oval holes and may be used within handreach.

## EUTRAC® 3CIRCUIT RECESSED TRACK 230~

16A max.



**Material:**  
Aluminium/plastic

**Dimensions:**  
2m L/W/H: 200/5,9/4,1 cm  
3m L/W/H: 300/5,9/4,1 cm

**Weight:**  
2 m: 2,6 kg  
3 m: 3,9 kg

**Note:**  
The 5 conductor recessed track has three separately switchable circuits.  
Can be shortened as required.  
Flexible suspension at spring clips over arrow-shaped profilings.  
Support brackets max. 4kg/m loadable.

**Versions:**  
white/2 m

white/3 m

**Art. No.:**  
145211

£99.00

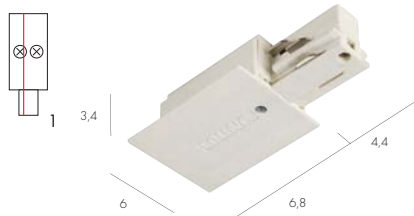
145311

P.O.A.

## EUTRAC® FEED-IN for 3Circuit high-voltage recessed track

230~

16A max.



**Material:**  
Plastic

**Dimensions:**  
L/W/H: 12,2/6/3,4 cm  
visible-L/W/H: 8/6/0,1 cm  
Mounting-L/W/H: 6,8/4/3,3 cm

**Note:**  
With circulating ceiling bearing profile.

**Versions:**  
Feed-in, earth left  
white

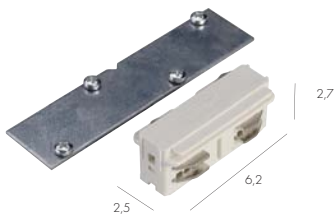
**Art. No.:**  
145541

£24.90

## EUTRAC® STRAIGHT COUPLER electr./mech. for 3Circuit high-voltage recessed track

230~

16A max.



**Material:**  
Steel/Plastic

**Dimensions:**  
L/W/H: 6,2/2,5/2,7 cm  
Steel plate-L/W/H: 12,2/2,9 cm

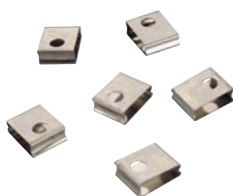
**Note:**  
Internal

**Versions:**  
white

**Art. No.:**  
145571

£16.50

## EUTRAC® SPRING CLIP for 3Circuit high-voltage recessed track



**Material:**  
Steel

**Dimensions:**  
L/W/H: 2/1/2,5 cm

**Note:**  
For on-site fast suspending brackets.

**Versions:**  
white  
6 pce.

**Art. No.:**  
145551

£9.90

## EUTRAC® END CAP for 3Circuit high-voltage recessed track



**Material:**  
Plastic/steel

**Dimensions:**  
L/W/H: 2,7/6/3,2 cm  
visible-L/W/H: 1,1/6/0,1 cm

**Note:**  
With ceiling bearing profile.

**Versions:**  
white

**Art. No.:**  
145621

£5.95



## EUTRAC® 3CIRCUIT SURFACE TRACK

230~

16A  
max.**Material:**

Aluminium/plastic

**Dimensions:**1 m L/W/H: 100/3,6/3,2 cm  
2 m L/W/H: 200/3,6/3,2 cm  
3 m L/W/H: 300/3,6/3,2 cm**Weight:**1 m: 1 kg  
2 m: 2 kg  
3 m: 3 kg**Versions:**black/1 m  
white/1 m  
silver grey anodized/1 m**Art. No.:**145100  
145101  
145102**Versions:**black/3 m  
white/3 m  
silver grey anodized/3 m**Art. No.:**145300  
145301  
145302

£33.50

P.O.A.

black/2 m  
white/2 m  
silver grey anodized/2 m145200  
145201  
145202black/4 m  
white/4 m  
silver grey anodized/4 m145400  
145401  
145402

£67.00

P.O.A.

## ADAPTER for 3Circuit high-voltage track

230~

10A  
max.5kg  
max.**Material:**

Polyamid 66 (Nylon)

**Dimensions:**

L/W/H: 8,3/3,6/7 cm

**Versions:**black  
white  
silver grey**Art. No.:**145990  
145991  
145994

£14.80

## MECHANICAL ADAPTER for 3Circuit high-voltage track

230~

10kg  
max.**Material:**

Aluminium

**Note:**

Thread M8

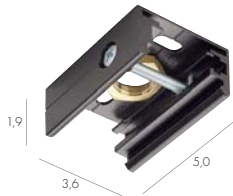
**Dimensions:**

L/W/H: 6,5/3,1/1,8 cm

**Versions:**black  
white  
silver grey**Art. No.:**144980  
144981  
144984

£6.90

## EUTRAC® PENDANT CLIP for 3Circuit high-voltage track

**Material:**

Aluminium

**Note:**For suspension via wire or  
pendulum suspension.**Dimensions:**

L/W/H: 5,3/6/1,9 cm

**Versions:**black  
white**Art. No.:**145730  
145731

£7.90

silver grey

145734

£9.90

## EUTRAC® PENDANT ROD FIXED for 3Circuit high-voltage track

0,6m



1,2m

**Material:**

Plastic/Steel

**Versions:**0,6 m  
black  
white**Art. No.:**145720  
145721**Versions:**1,2 m  
black  
white**Art. No.:**145710  
145711**Dimensions:**145720/1/4 Ø/H: 7/63,5 cm  
145710/1/4 Ø/H: 7/122 cm  
Tube-Ø: 1,3 cm

£29.90

£34.90

silver grey

145724

silver grey

145714

**Note:**Can be cut on site, to be used with  
pendant clip (145730/-1/-4).

£39.90

£49.90

## EUTRAC® WIRE SUSPENSION for 3Circuit high-voltage track

1,5m



3,0m

**Material:**

Aluminium/Steel

**Note:**Height adjustable.  
To be used with pendant clip  
(145730/-1/-4) or pendant  
coupler (145600/-1/-4).**Versions:**chrome  
1,5 m**Art. No.:**

145800

**Dimensions:**Sleeve-Ø/H: 2/2,5 cm  
Wire thickness: 1,5 mm

£24.90

3 m

145810

£29.90


**EUTRAC® END CAP for 3Circuit high-voltage track**


**Material:**  
Plastic

**Dimensions:**  
L/W/H: 3,6/1,7/3,2 cm  
visible-L/W/H: 3,6/0,2/3,2 cm

<b>Versions:</b>	<b>Art. No.:</b>
black	145590
white	145591
	<b>£2.98</b>
silver grey	145594
	<b>£4.80</b>

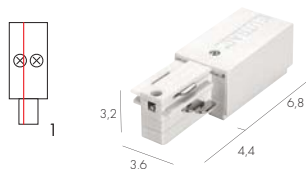
**EUTRAC® MECHANICAL UNIVERSAL ADAPTER for 3Circuit high-voltage track**


**Material:**  
Plastic/steel

**Note:**  
Loadable 10 kg max.

**Dimensions:**  
Ø/H: 2,7/4,2 cm  
visible-Ø/H: 2,7/3,2 cm

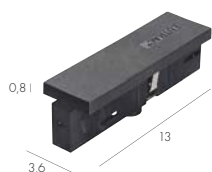
<b>Versions:</b>	<b>Art. No.:</b>
black	145980
white	145981
	<b>£19.90</b>

**EUTRAC® FEED-IN for 3Circuit high-voltage track**


**Material:**  
Plastic

**Dimensions:**  
L/W/H: 11,2/3,6/3,2 cm  
visible-L/W/H: 6,8/3,6/3,2 cm

<b>Versions:</b>	<b>Art. No.:</b>	<b>Versions:</b>	<b>Art. No.:</b>
Feed-in 1, earth left		Feed-in 2, earth right	
black	145510	black	145520
white	145511	white	145521
	<b>£14.80</b>		<b>£14.80</b>
silver grey	145514	silver grey	145524
	<b>£19.90</b>		<b>£19.90</b>

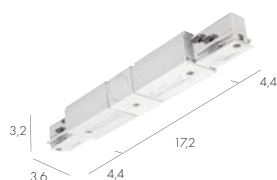
**EUTRAC® MIDDLE FEED-IN for 3Circuit high-voltage track**


**Material:**  
Plastic

**Note:**  
Can be positioned on any part of the track.

**Dimensions:**  
L/W/H: 13/3,6/3,6 cm  
visible-L/W/H: 11,2/3,6/0,8 cm

<b>Versions:</b>	<b>Art. No.:</b>
black	145530
white	145531
	<b>£34.90</b>
silver grey	145534
	<b>£39.90</b>

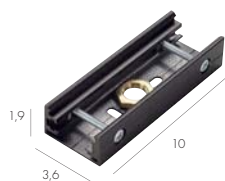
**EUTRAC® STRAIGHT COUPLER for 3Circuit high-voltage track**


**Material:**  
Plastic

**Note:**  
With feed-in possibility

**Dimensions:**  
L/W/H: 26/3,6/3,2 cm  
visible-L/W/H: 17,2/3,6/3,2 cm

<b>Versions:</b>	<b>Art. No.:</b>
black	145660
white	145661
	<b>£49.90</b>
silver grey	145664
	<b>£59.50</b>

**EUTRAC® PENDANT COUPLER for 3Circuit high-voltage track**


**Material:**  
Aluminium

**Note:**  
With suspension possibility for wire and pendulum suspension  
Ø 13 mm

**Dimensions:**  
L/W/H: 10/3,6/1,9 cm

<b>Versions:</b>	<b>Art. No.:</b>
black	145600
white	145601
silver grey	145604
	<b>£14.80</b>

**EUTRAC® STRAIGHT COUPLER ELECTRICAL** for 3Circuit high-voltage track

230~

16A  
max.**Material:**  
Plastic**Dimensions:**  
L/W/H: 5,8/1,5/2,6 cm**Note:**  
Inboard, by wire and pendulum suspension due to static reasons, pendant coupler is additionally needed (145600/-1/-4).**Versions:**  
black  
white

silver grey

**Art. No.:**  
145560  
145561

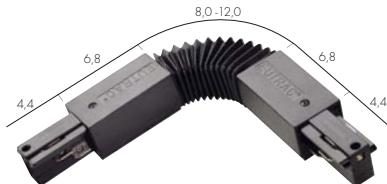
£14.80

145564

£19.90

**EUTRAC® FLEX COUPLER** for 3Circuit high-voltage track

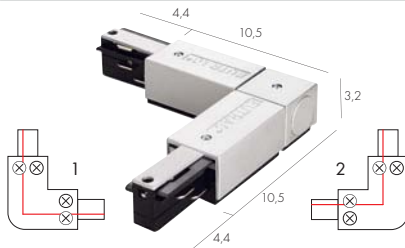
230~

16A  
max.**Material:**  
Plastic**Dimensions:**  
L/W/H: 30,7/3,6/3,2 cm  
visible-L/W/H: 22/3,6/3,2 cm**Note:**  
For radius of 30°-330°.  
With feed-in possibility**Versions:**  
black  
white**Art. No.:**  
145580  
145581

£69.50

**EUTRAC® L-COUPLER** for 3Circuit high-voltage track

230~

16A  
max.**Material:**  
Plastic**Dimensions:**  
L/W/H: 15/15/3,2 cm  
visible-L/W/H:  
10,5/10,5/3,2 cm**Note:**  
With feed-in possibility.**Versions:**  
L-coupler 1, earth outside  
black  
white

silver grey

**Art. No.:**

145670

145671

£49.90

£59.50

**Versions:**  
L-coupler 2, earth inside

black

white

silver grey

**Art. No.:**

145680

145681

£49.90

£59.50

**Art. No.:**

145680

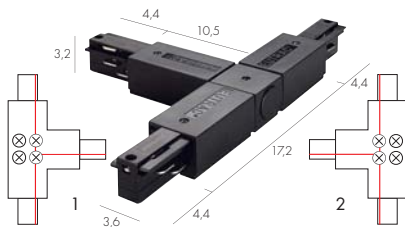
145681

£49.90

£59.50

**EUTRAC® T-COUPLER** for 3Circuit high-voltage track

230~

16A  
max.**Material:**  
Plastic**Dimensions:**  
L/W/H: 26/18,5/3,2 cm  
visible-L/W/H:  
17,2/10,9/3,2 cm**Note:**  
With feed-in possibility.**Versions:**  
T-coupler 2, earth left  
black  
white

silver grey

**Art. No.:**

145630

145631

£69.50

£89.50

**Versions:**  
T-coupler 1, earth right

black

white

silver grey

**Art. No.:**

145640

145641

£69.50

£89.50

**Art. No.:**

145640

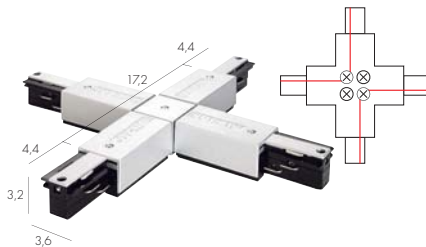
145641

£69.50

£89.50

**EUTRAC® X-COUPLER** for 3Circuit high-voltage track

230~

16A  
max.**Material:**  
Plastic**Dimensions:**  
L/W/H: 26/26/3,2 cm  
visible-L/W/H:  
17,2/17,2/3,2 cm**Note:**  
With feed-in possibility  
2 power circuits.**Versions:**  
black  
white

silver grey

**Art. No.:**  
145690  
145691

£99.00

145694

£129.00

**EUTRAC® POWER SOCKET ADAPTER** for 3Circuit high-voltage track

230~

6,3A  
max.**Material:**  
Plastic**Dimensions:**  
L/W/H: 9,6/6,5/9 cm  
visible-L/W/H: 6,5/6,5/5,5 cm**Note:**  
With feed-in possibility.  
For the connection of devices with safety class I (system Schuko) e.g. universally applicable for device plug safety class II, for mains voltage 220-240V with fuse 6,3A.**Versions:**  
black  
cream white**Art. No.:**  
145700  
145701

£69.50